

TELEVISIONS / PROJECTORS / SOUNDBARS / RECEIVERS / AUDIO / SPEAKERS / BLU-RAY **SONY**

## INTRODUCTION

### TELEVISIONS

Cognitive Processor XR  
BRAVIA XR OLED  
BRAVIA XR OLED A90J  
BRAVIA XR OLED A80J  
BRAVIA XR Full Array LED  
BRAVIA XR 8K Full Array LED Z9J  
BRAVIA XR Full Array LED X95J  
BRAVIA XR Full Array LED X90J  
BRAVIA XR Full Array LED X92  
MASTER Series OLED A9S  
X91J  
X85J  
X80J  
Google TV  
Entertainment

### PROJECTORS

X1™ Signal Processing Technology  
SXRD™ Technology  
VPL-GTZ380  
VPL-VW5000ES  
VPL-VW1025ES  
VPL-VW915ES  
VPL-VW715ES  
VPL-VW325ES  
VPL-VZ1000ES  
VPL-HW65ES

### SOUNDBARS

HT-A9  
HT-A7000  
SA-SW5  
SA-SW3  
SA-RS3S  
HT-ST5000  
HT-Z9F

### RECEIVERS

STR-ZA5000ES  
STR-ZA3100ES  
STR-ZA2100ES  
STR-ZA1100ES

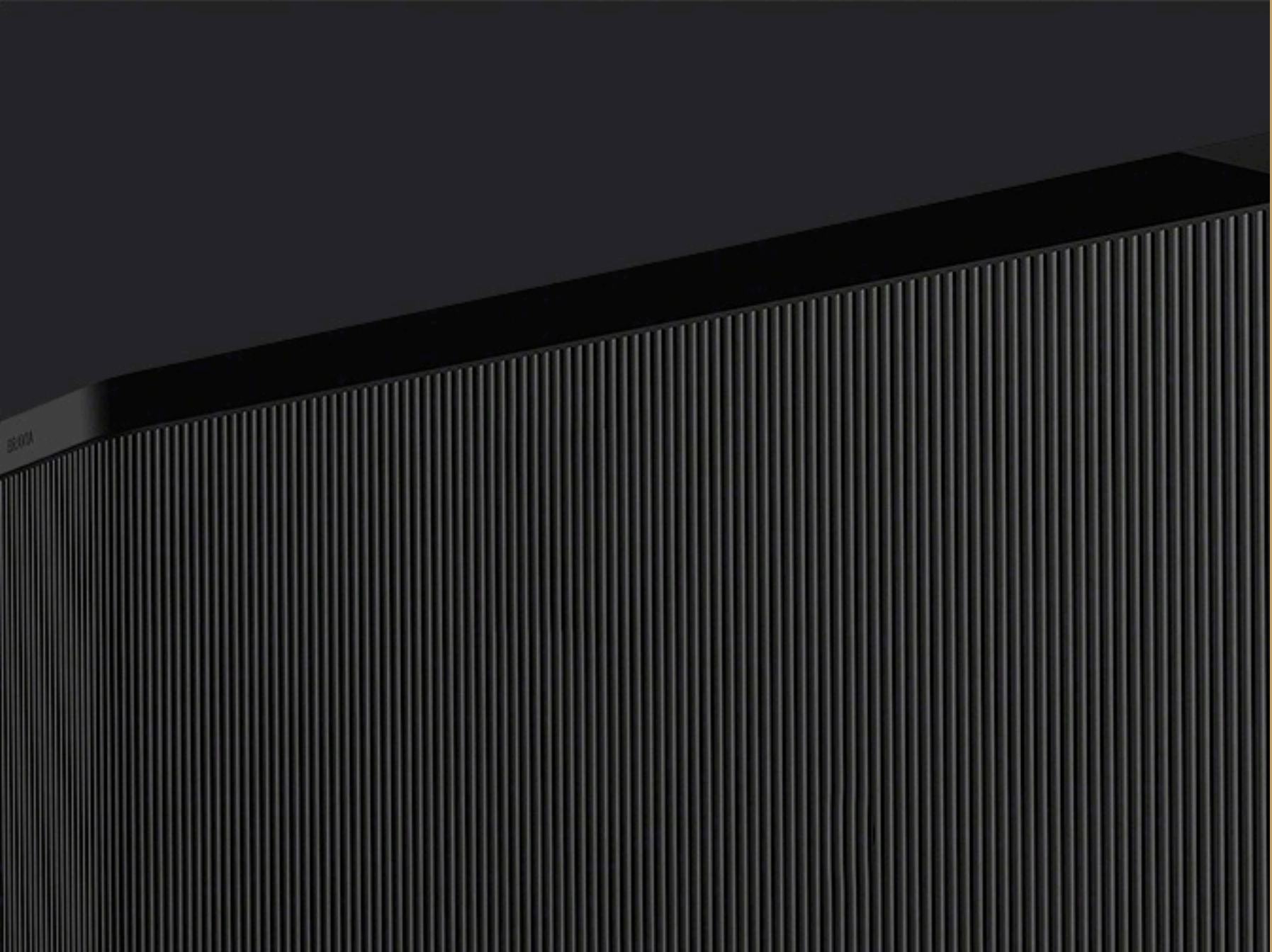
### AUDIO

TA-A1ES  
HAP-Z1ES  
AR speaker series  
SS-AR1  
SS-AR2  
ES speaker series  
SS-NA2ES  
SS-NA5ES  
SS-NA8ES  
SA-NA9ES  
Signature speaker series  
SA-Z1  
TA-ZH1ES  
Blu-ray UBP-X800M2

### SPECIFICATIONS

Television stand options  
Televisions  
Projectors & accessories  
Receivers  
Speakers

For decades, Sony has led entire industries by embracing the pursuit of perfection. In the world of home entertainment, that spirit remains unchanged. A long legacy of creating, distributing, and displaying movies, music, and more has yielded the level of technology necessary for unparalleled audio and visual performance. Sony's TVs, projectors, receivers, speakers, and soundbars are made for home theaters, so you can create the entertainment experience you've always desired.



TELEVISIONS



## Introducing the world's first TVs with cognitive intelligence<sup>1</sup>

The all-new Cognitive Processor XR ushers in a revolution in TV processing technology to deliver incredible contrast, high peak brightness, and natural colors. Hundreds of thousands of individual on-screen elements are processed and remastered in the blink of an eye, boosting color, contrast, clarity, and motion handling, bringing astounding realism to your content.

**BRAVIA X|R**



## BRAVIA XR OLED

**When panel meets processing power.** Feel the beauty of your favorite content with Sony BRAVIA XR™ OLED TVs, powered by the Cognitive Processor XR. Sony's breakthrough in TV processing maximizes OLEDs intense contrast with pure blacks and high peak brightness, while retaining natural real-world colors.



BRAVIA XR OLED A90J



### OLED TV made brighter than ever

Introducing Sony's best-ever OLED TV, powered by the all-new Cognitive Processor XR™ with awe-inspiring contrast and our brightest-ever OLED picture. The BRAVIA XR™ A90J OLED TV features next-generation technologies that redefine the viewing experience.



### TRILUMINOS color brings reality to your home theater

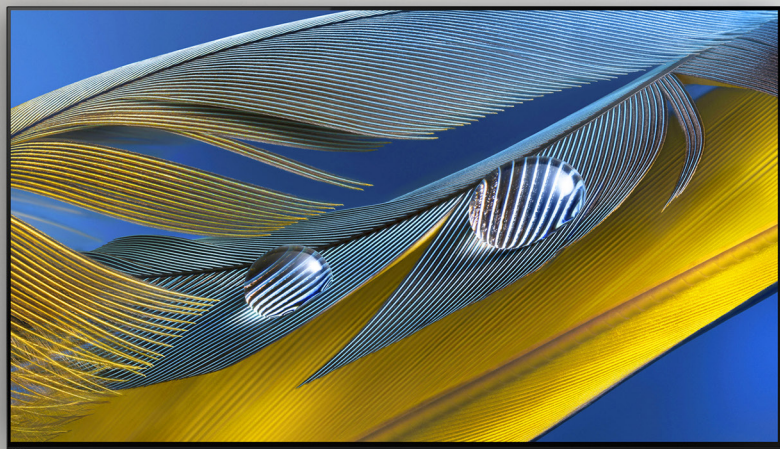
Access billions of accurate colors and reproduce each shade with the subtle differences seen in the real world with XR Triluminos™ Pro. Extremely precise details within textures and skin tones that look completely natural give lifelike accuracy to shows, movies, and more.



### Technology that finds the details you need to see

XR OLED Contrast Pro technology couples with Sony's brightest-ever OLED to analyze and enhance the picture in the same way the human eye focuses for immersive depth and realism, resulting in ultra-detailed shadows and crisp, clean peak highlights.





BRAVIA XR OLED A80J



### **Bring OLED into every room**

Enjoy premium OLED picture with lifelike contrast and color, powered by the all-new Cognitive Processor XR. Experience room-filling immersive sound that matches the action on screen with Acoustic Surface Audio+.

### **Beautifully designed**

Our minimalist One Slate design with seamless edge bezel elegantly embraces the screen in a single pane of glass that keeps you focused on the big picture. The premium 3-way multi-position stand gives wider flexibility in how the TV can be positioned.



### **Feel the beauty of OLED contrast**

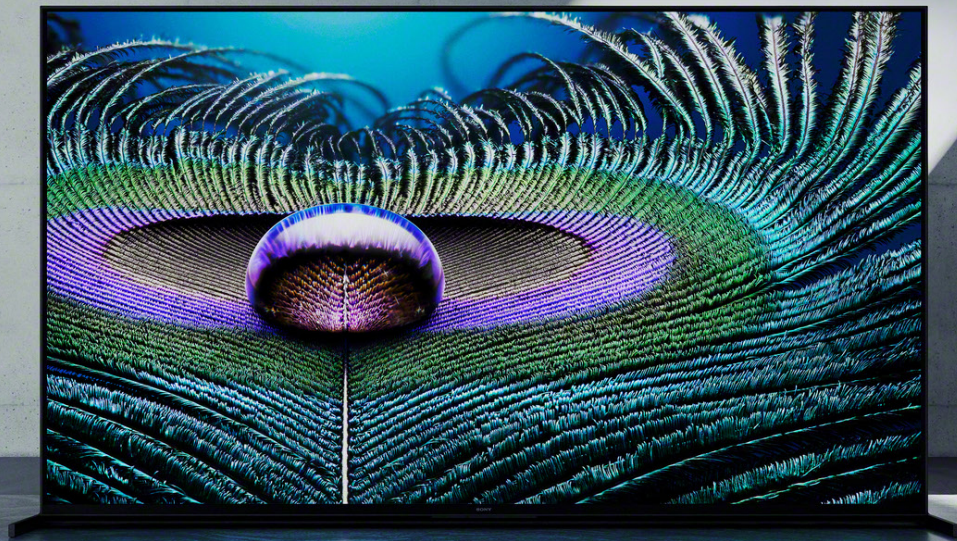
XR OLED Contrast technology enhances OLEDs natural pure blacks by maximizing details in the shadows and surrounding them with dazzling, vibrant colors and accurate peak highlights for deep, immersive images.

**BRAVIA XR**  
Full Array LED

**Premium picture with stunning contrast.** Take your viewing experience to the next level with Sony BRAVIA XR Full Array LED TVs, powered by the Cognitive Processor XR. Experience vibrant colors and enhanced wide contrast with deep blacks that maximize shadow detail and deliver peak brightness.



# BRAVIA XR 8K FULL ARRAY LED Z9J

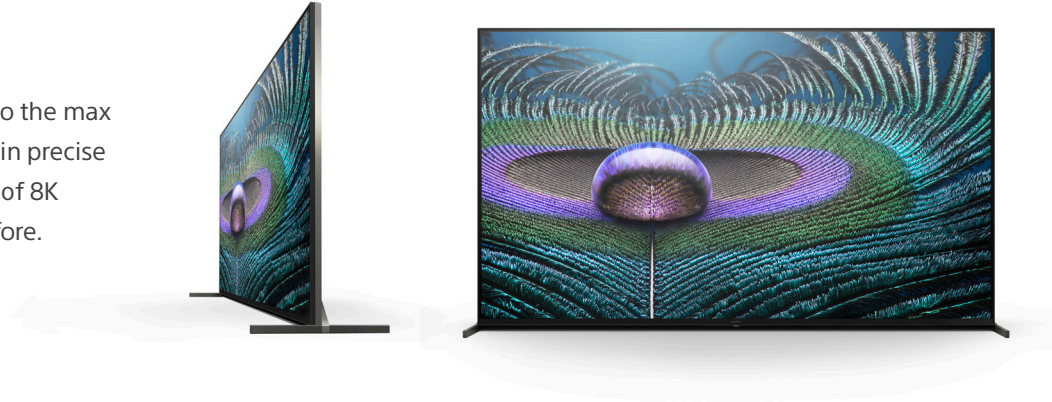


BRAVIA XR **8K**

Full Array LED

## Premium 8K TV is here

The Cognitive Processor XR pushes 8K resolution<sup>2</sup> to the max and upscales everything you watch for scenes rich in precise detail and texture. Experience the dramatic beauty of 8K picture quality and explore the world like never before.



## Experience real-life depth and detail

The deep blacks and intense brightness of 8K Full Array LED are on full display with the astounding immersion of XR Contrast Booster 15. Peak brightness is maximized and black levels are precisely controlled, retaining the beautiful shadows and highlights of your favorite content.



## Enjoy fast-moving blur-free scenes

Watching sports and action-packed movies gets an upgrade with XR Motion Clarity™ technology. The powerful Cognitive Processor XR cross-analyzes and precisely controls action so that it stays smooth, bright, and clear, preserving beautiful 8K resolution in every scene.

# BRAVIA XR FULL ARRAY LED X95J



BRAVIA XR FULL ARRAY LED X95J

## Big screen. An even bigger viewing angle.

4K HDR<sup>3</sup> has never felt more real, with true-to-life contrast and enhanced viewing angles, powered by the all-new Cognitive Processor XR.<sup>™</sup> Full Array LED enhanced by XR Contrast Booster 10 delivers an ultra-realistic picture with deep, detailed blacks and refined peak brightness.



## Immerse yourself in Full Array LED

Sony Full Array LED TVs precisely control the TV's backlighting to bring out deep blacks and intense brightness. XR Contrast Booster 10 technology further enhances contrast to feel more true-to-life by bringing out details lost in dark shadows or blown-out highlights.



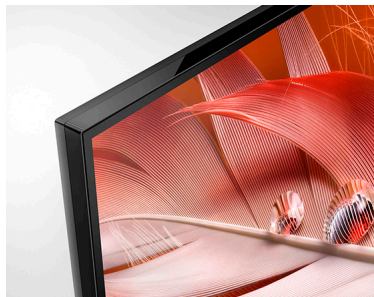
## Beautiful picture from any angle in any room

X-Wide Angle technology preserves vibrant real-world colors and retains more brightness while viewing the TV from any angle, even for those watching from the sides of the TV. X-Anti Reflection technology cuts glare and light reflection for viewing in brightly lit rooms. *(X-Anti reflection is not available on 65" class)*



# BRAVIA XR FULL ARRAY LED X90J





### Explore the world with precise 4K HDR<sup>3</sup> picture

Everything you watch becomes more detailed and immersive with true-to-life 4K HDR, powered by the all-new Cognitive Processor XR.<sup>™</sup> Feel the intensity of the sun and experience all the stars of the night sky with Full Array LED and XR Contrast Booster 5.



### Intelligent motion processing

XR Motion Clarity<sup>™</sup> cross-analyzes and precisely controls the action in every scene to ensure picture quality stays smooth, bright, and clear with no blur, significantly benefiting action-packed movies and sports.



### Engineered for next-gen gaming

Take your gaming to the next level with Sony TVs featuring technology for next-gen gaming. With 4K/120fps, you'll achieve increased frame rate significantly benefiting high-performance 4K gaming. Dedicated BRAVIA Game Mode reduces input lag and optimizes performance in every frame.<sup>4</sup>

*(Applicable models: X90J, X92, X95J, A80J, A90J and Z9J)*



# BRAVIA XR FULL ARRAY LED X92

**Big screens for big games.** Bring your home theater to life with an ultra-large 100" class (99.5" *diag.*) screen Full Array LED TV. Advanced TV processing, XR Triluminos PRO color, and XR Motion Clarity further enhance everything you watch for a remarkable viewing experience. Everything becomes more detailed and immersive with true-to-life 4K HDR<sup>3</sup>, powered by the all-new Cognitive Processor XR.™

# MASTER SERIES OLED A9S

## The beauty of OLED picture quality in a compact size

Experience deep black and natural colors of OLED in a more compact size, powered by the Picture Processor X1 Ultimate. Complemented by Acoustic Surface Audio, sound comes from the entire screen to put picture and sound in perfect harmony.



# X91J

## A big screen for all your favorite content

Rediscover everything you watch and play with a gorgeous large-screen 4K HDR picture.<sup>3</sup> Powered by the X1 4K HDR Processor, the X91J utilizes Full Array LED and TRILUMINOS color to display lifelike images with beautiful dynamic range.





## X85J

### Enjoy a new standard of TV

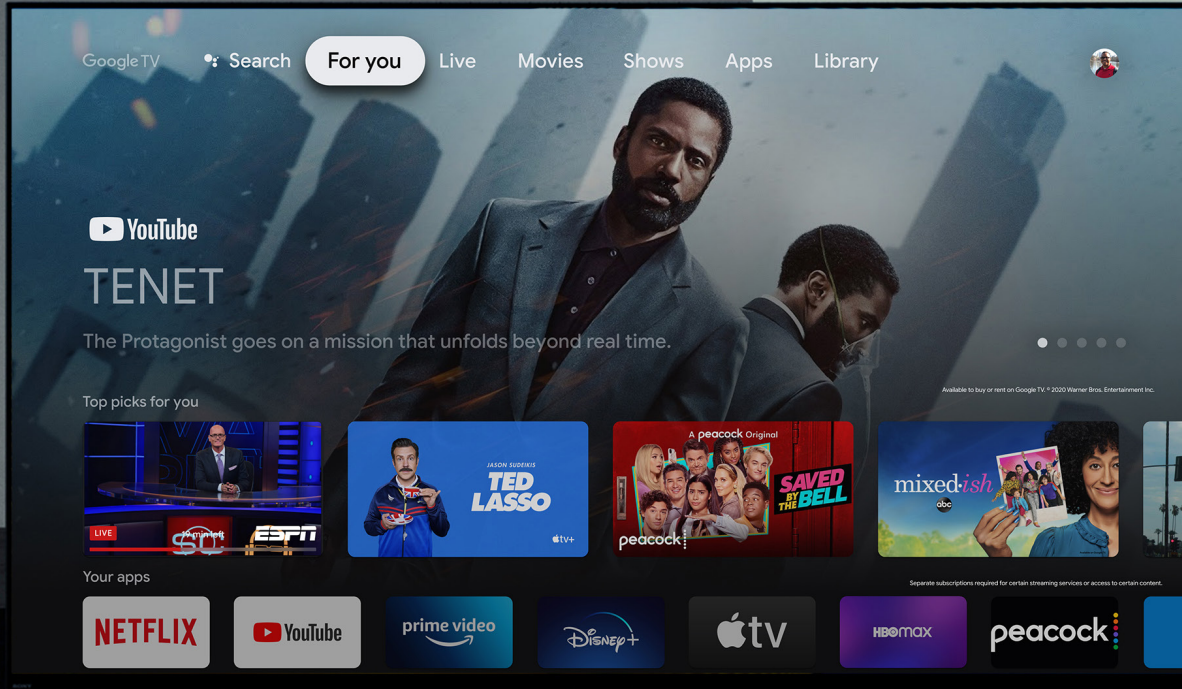
Powered by the X1 4K HDR Processor, super-bright 4K HDR pictures come to life with vivid color and realistic contrast.<sup>3</sup> The X85J is equipped with an advanced 120Hz panel for super-smooth images and beautifully finished in a narrow bezel, flush surface design.



## X80J

### Step into the world of 4K HDR

The X80J Smart TV, powered by the 4K HDR Processor X1, provides reduced noise and boosted details for lifelike picture quality with natural color and clear sound.<sup>3</sup> Google TV and Google Assistant give you access to all your favorite streaming apps simply by using your voice.<sup>5</sup>



**The entertainment you love. With a little help from Google.**

Google TV™ brings together movies, shows, and more from across your apps and subscriptions and organizes them just for you. Discover new things to watch with recommendations based on what you watch and what interests you.<sup>5</sup>



## BRAVIA CORE

Enjoy streaming high-quality movies included with the BRAVIA CORE™ app, exclusively on select Sony TVs.<sup>6</sup>

BRAVIA CORE features Pure Stream™, streaming at up to 80 Mbps, delivering lossless 4K UHD picture quality on a wide range of content.<sup>7</sup>

It's simple and easy to enable this functionality on BRAVIA CORE from the settings—once it's on, it's always on with adaptive streaming functionality. Access the largest IMAX® Enhanced collection for a truly elevated movie experience at home. Optimized for BRAVIA XR, it delivers remastered IMAX® picture and immersive sound by DTS.

### Content at its best

Sony partners with industry leaders in picture and sound to strive to preserve the creator's vision when displayed on your Sony TV, no matter the source of the content.



---

Apple HomeKit and AirPlay 2 support allows you to seamlessly integrate your Sony Google TV with your Apple devices for effortless smart home management and content streaming.<sup>11</sup>



# PROJECTORS



**X1™ signal processing technology**

X1 Ultimate / X1 for projector takes our acclaimed BRAVIA TV video processing and optimizes it for projection. The incredible power of this video engine enables prodigious data processing, with real-time enhancement for each individual on-screen object. The result is true high dynamic range imagery, with texture, color, contrast, and realism never before available to home cinema.

**X1™ Ultimate for projector**

- Features included:*
- Object-based HDR remaster
  - Dynamic HDR Enhancer
  - Object-based Super Resolution
  - Dual database processing
  - Digital Contrast Optimizer

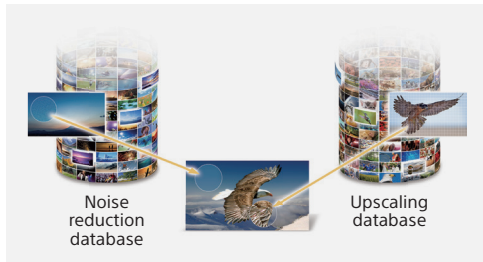
*Model:*  
VPL-GTZ380

**X1™ for projector**

- Features included:*
- Dynamic HDR Enhancer
  - Super Resolution

*Models:*  
VPL-VW1025ES  
VPL-VW915ES  
VPL-VW715ES  
VPL-VW325ES





### Dual database processing

Two powerful image improvement databases work together to dynamically improve pixels in real-time for image clarity.



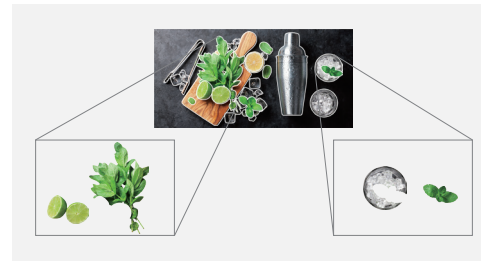
### Object-based HDR remaster

Individual objects on screen are analyzed and the contrast adjusted, to reproduce greater depth and textures, and more realistic pictures.



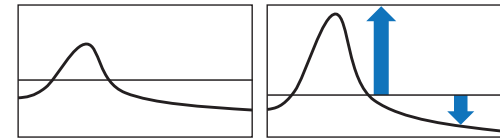
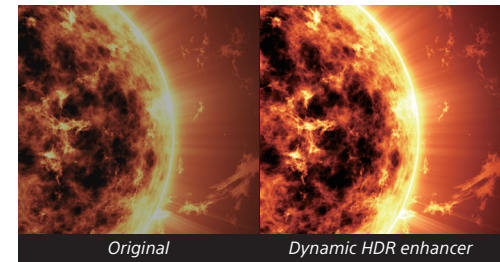
### Digital contrast optimizer

The image contrast is optimized by analyzing each scene in advance to deliver inky blacks and superb shadow details.



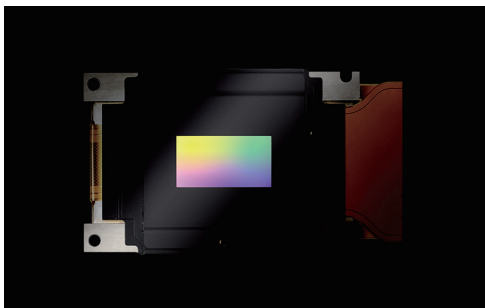
### Object-based super resolution

Individual objects on the screen are analyzed to adjust contrast and reproduce realistic pictures with greater depth and textures.



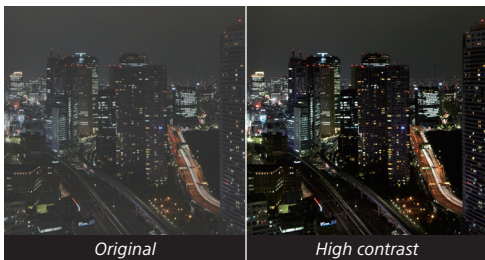
### Dynamic HDR enhancer

Deliver the optimal projected HDR experience through Sony's advanced scene by scene HDR processing. Achieve striking highlights whilst maintaining deep black levels.



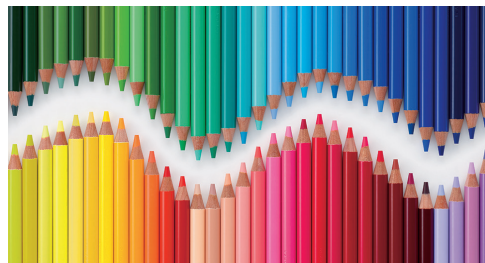
### SXR<sup>™</sup> for uncompromising picture quality

The advanced SXR (Silicon X-tal Reflective Display) panel technology featured in Sony's home cinema projectors delivers native 4K-resolution (4096x2160) images with 8.8 million pixels for an incredibly lifelike picture. SXR projection offers rich, inky blacks as well as clear cinematic motion and image smoothness, and can reproduce vibrant colors with more tones and textures than a standard projector system. With high resistance to heat and light, it ensures spectacularly stable brightness.



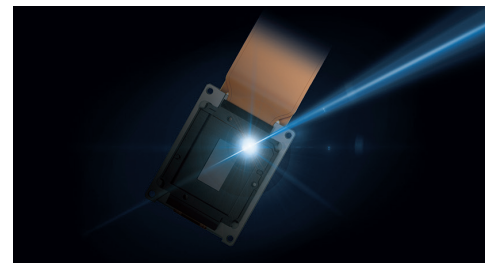
#### High contrast

The reflective silicon layer provides better light control for precisely delivered shadows and blacks.



#### High color reproduction

The 3-chip design uses a single LCOS chip for each of the primary colors (red, green, and blue) to offer true-to-life colors and tones.



#### Super light-resistance

The small format 0.74" SXR panel is used in Sony's 4K projector to deliver native 4K. With super light-resistance, it spectacularly achieves 10,000 lm with such a small panel.

*Available on model: VPL-GTZ380*



VPL-GTZ380

VPL-GTZ380



# VPL-GTZ380

**X1**  
Ultimate  
for projector

**4K**  
HDR

**SXR**D

**Z-Phosphor**  
LASER LIGHT SOURCE

Realize overwhelming native 4K image expression like you've never seen before. Sony's X1 Ultimate processor is paired with a super high contrast 10,000lm Z-Phosphor laser light source and DCPI-P3 wide color space to make your ultimate vision a reality.<sup>3</sup> Bring movies to life with strikingly expressive images that deliver an unforgettable viewing experience, no matter what you're watching.



VPL-VW5000ES

VPL-VW5000ES

# VPL-VW5000ES

An exceptional 5,000 lumens of brightness is perfect for large home cinemas and well-lit living spaces alike. Combine HDR compatibility with the ability to simulate the BT2020 color gamut on top of the full DCI color space, and you have an experience that brings the immersive excitement of true 4K cinematic images into your home.<sup>3</sup>

**X1**  
for projector

**4K**  
**HDR**

**SXR**D

**Z-Phosphor**  
LASER LIGHT SOURCE





VPL-VW1025ES

VPL-VW1025ES



# VPL-VW1025ES

**X1**  
for projector

**4K**  
**HDR**

**SXR**D

**Z-Phosphor**  
LASER LIGHT SOURCE

The wonder of the cinema comes home with 4K HDR clarity.<sup>3</sup> The X1 for projector processor and a 2,200 lumen Z-Phosphor laser light source bring exceptionally bright and clear colors, contrast, and motion to all your content for over 20,000 hours of play time. With the ARC-F lens equipped for ultra-crisp images, you'll wonder how you watched movies before installing the VW1025ES.





VPL-VW915ES

VPL-VW915ES

# VPL-VW915ES

Enjoy content with cinematic 4K HDR laser clarity in any home theater.<sup>3</sup> With 2,000 lumens, you'll experience rich cinematic colors, smooth motion, and dazzling brightness. A highly efficient laser light source gives you years of illumination and infinite dynamic contrast. Its compact size gives greater installation flexibility in any room size.

**X1**  
for projector

**4K**  
HDR

**SXR**D

**Z-Phosphor**  
LASER LIGHT SOURCE





VPL-VW715ES

VPL-VW715ES

# VPL-VW715ES

Experience crystal-clear 4K HDR with brightness that lights up the room.<sup>3</sup> Sony's X1 for projector processor with Dynamic HDR Enhancer delivers a contrast ratio of 350,000:1. Every scene springs to life with finer detail, realism, and deep blacks. Picture Position Memories let you quickly watch movies in the ideal screen format with ease.

**X1**  
for projector

**4K**  
HDR

**SXR**D





VPL-VW325ES

VPL-VW325ES



# VPL-VW325ES

**X1**  
for projector

**4K**  
HDR

**SXR**D

Big scenes are even bigger with the VW325ES 4K HDR Home Theater Projector. Bring lifelike 4K HDR resolution to any room with the X1 for projector processor.<sup>3</sup> 1,500 lumens of brightness light up the action with Motionflow™ and Advanced Reality Creation technologies, creating a crisp, sharp picture in every scene.

# VPL-VZ1000ES

Let your living space double as a 4K HDR home theater with this ultra-short throw projector.<sup>3</sup> Place the projector just 6" away from the wall to enjoy over 100" of stunning picture quality with corner-to-corner clarity. Designed for style and built for flexibility, the VZ1000ES can be installed as a floor, ceiling, or rear projection unit, removing the limits of how you can use it with your home setup.

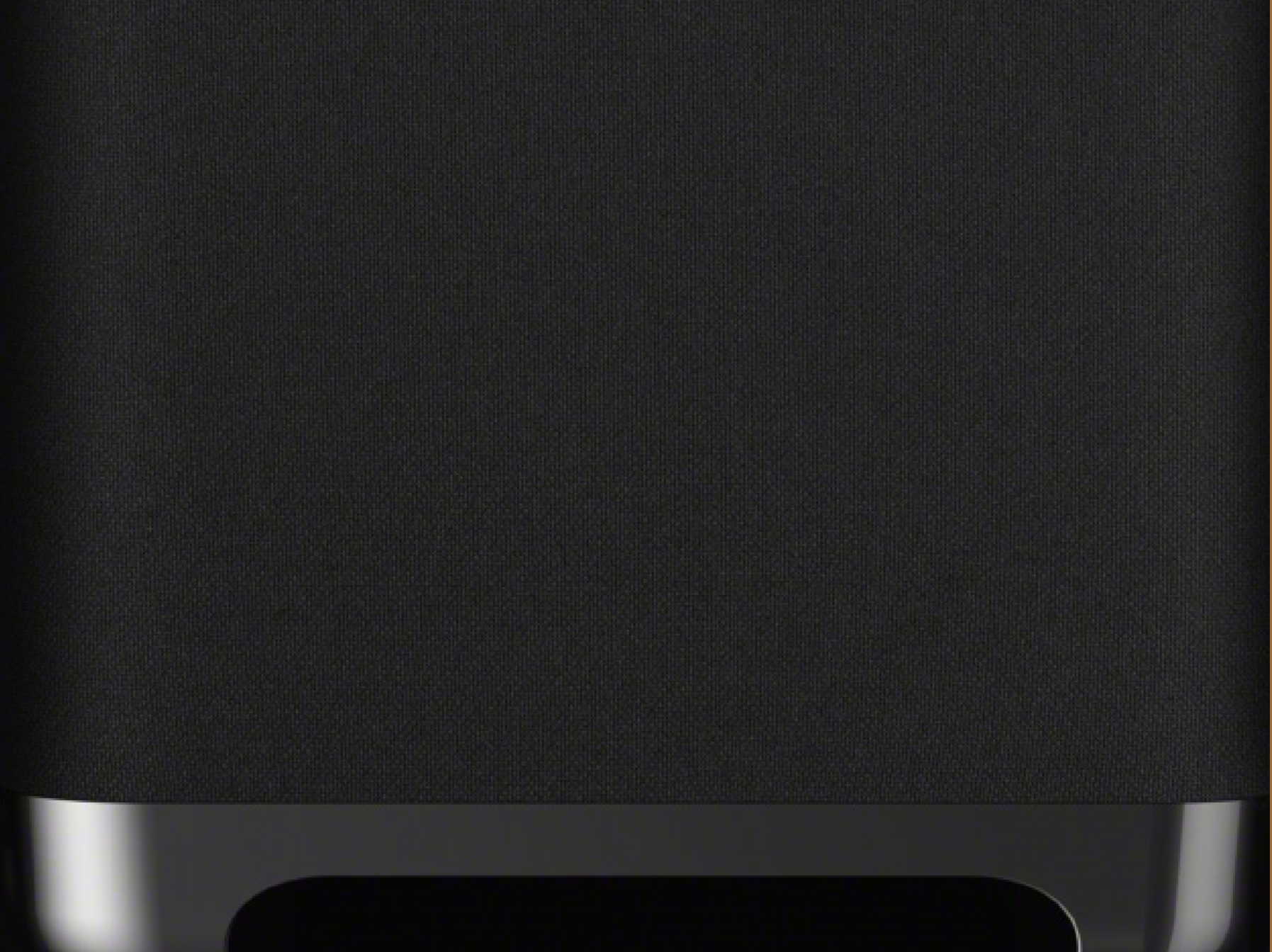


# VPL-HW65ES

Experience full HD video with brightness that lights up the room.<sup>3</sup> With a dynamic contrast ratio of 120,000:1 and Advanced Iris, every scene springs to life with finer detail. Play games in 60p with low latency for realistic reaction time.



# SOUNDBARS





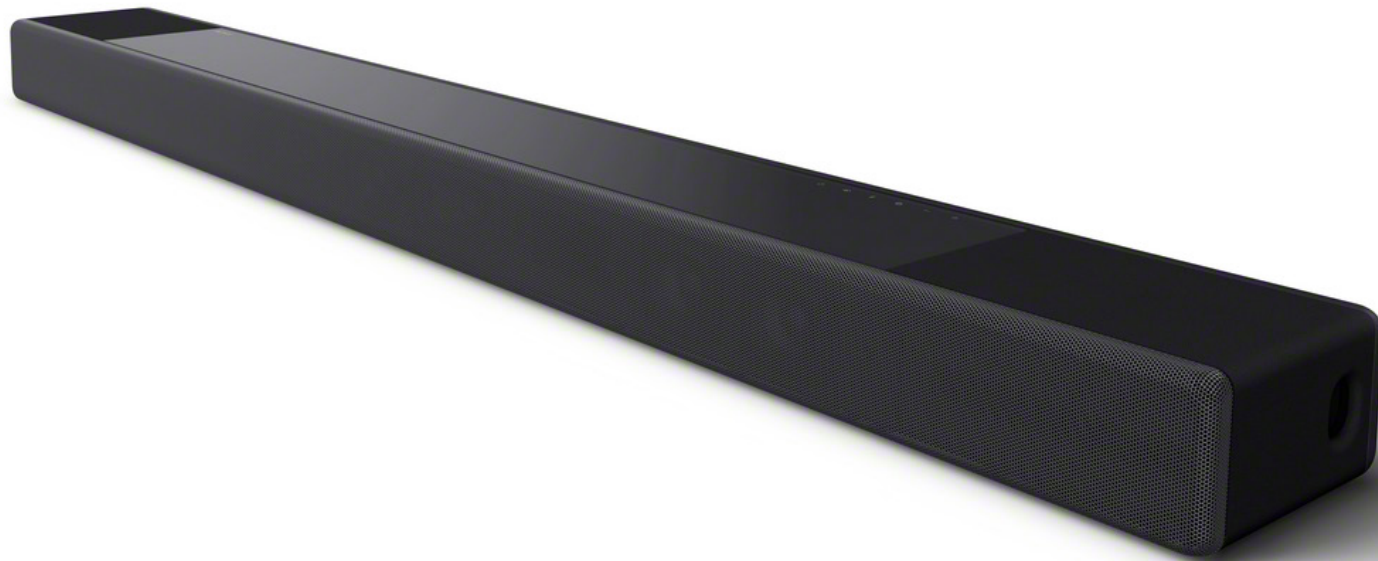


## HT-A9

Immerse yourself in a multi-dimensional audio experience with the HT-A9 Home Theater System. Unique 360 Spatial Sound Mapping technology calibrates sound to your room for an environment that seems to expand beyond the walls. Support for 8K HDR<sup>2</sup>/4K 120p<sup>4</sup> passthrough and Dolby Vision<sup>9</sup> video passthrough make your favorite movies and games sound out of this world. Give your home audio atmosphere even more rich, powerful bass by adding the optional SA-SW5 or SA-SW3 wireless subwoofers.

# HT-A7000

Discover a whole new level of immersion that envelops you in surround sound. Feel the action happening above and all around you with Sound Field Optimization personalizing the entire experience. Built-in side beam tweeters, X-Balanced speaker unit, and more bring you closer to the action than ever before. Upgrade your home theater with 8K HDR<sup>2</sup>/4K 120p<sup>4</sup> passthrough for high quality video and sound. Create an even more captivating audio atmosphere by adding the optional SA-SW5 or SA-SW3 wireless subwoofers and SA-RS3S wireless rear speakers.



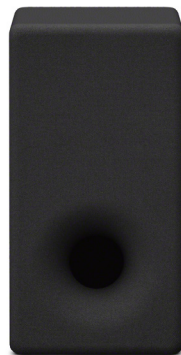


## SA-SW5

Power up your home theater system with the booming bass of the SA-SW5 wireless subwoofer, designed to pair seamlessly with your HT-A9 Home Theater System or HT-A7000 Soundbar to deliver an immersive cinematic experience. A simple wireless setup adds 300W<sup>13</sup> of powerful bass to all your favorite content for an authentic home cinema feel.

## SA-SW3

Experience deep, rich bass in everything you watch with the SA-SW3 wireless subwoofer, designed to pair with the HT-A9 Home Theater System or HT-A7000 Soundbar for advanced home theater sound. Easy and seamless setup instantly adds 200W<sup>14</sup> of deep bass to boost the impact of cinematic content with reduced distortion, clearer voices, and extra fidelity.



## SA-RS3S

Enhance your home theater experience with optional wireless rear speakers for the HT-A7000 Soundbar. Take movies, shows, sports, and music to the next level by adding to your cinematic surround sound atmosphere. These rear speakers automatically connect to your HT-A7000 Soundbar right out of the box, bringing crystal-clear, room-filling sound into any home theater environment.



# HT-ST5000

Discover a new level of immersive, cinematic audio at home. Discover full audio immersion with Dolby Atmos®, S-Force PRO Front Surround, and Digital Signal Processing, which emulate a natural, three-dimensional sound field, all from a single soundbar and subwoofer. IP control allows you to integrate this soundbar with your home entertainment system.

# HT-Z9F

Feel the thrill of your favorite shows and movies. The Z9F 3.1ch Soundbar's Dolby Atmos/DTS:X<sup>12</sup> compatibility places you in the middle of the action with Vertical Surround Engine. Five different sound modes optimize audio to what you're hearing. Wireless and network-capable with IP control, the Z9F can also connect to select rear speakers for a full-room solution that provides a cinematic experience.



LINE 1



LINE 2



LINE 3



LINE 4



LINE 5





# STR-ZA5000ES

Sony's flagship AV receiver brings Dolby ATMOS® and DTS:X®<sup>12</sup> to the award-winning line of ES receivers, while delivering the superior audio and video quality you expect from Sony. This 9.2ch 4K HDR AV receiver features renowned ES build quality along with enhanced compatibility with leading control systems, intuitive web browser compatibility, native HDR, HDCP 2.2 support, 3-zone capability, and so much more.



# STR-ZA3100ES

This 7.2 channel 4K AV receiver with Dolby Atmos® and DTS:X®<sup>12</sup> Object-based Surround Sound brings powerful configurability and renowned ES quality. Full 4K HDR compatibility, web browser compatibility, 3-zone capability, and easy IP integration with leading control systems create a total package of top class features and performance.





## STR-ZA2100ES

Enjoy high quality content with 4K HDR passthrough support. Hear your favorite content in Dolby Atmos® and DTS:X®<sup>12</sup> Object-based Surround Sound. With 3-zone capability and full web browser compatibility, the ZA2100ES is ready for any configuration.



## STR-ZA1100ES

Full 4K HDR compatibility, web browser compatibility, and easy IP integration with leading control systems gives the ZA1100ES 7.2ch 4K AV receiver versatile configurability and 2-zone capability.

AUDIO





# TA-A1ES

This integrated stereo amplifier features FET input buffer, SEPP hi-current amp, and intelligent BIAS control. Combined, these technologies create a stunning 2 channel audio experience, bringing you music that gets closer to the original studio master recording.



# HAP-Z1ES

Hear music as it was intended. With 1TB of hard drive space,<sup>15</sup> support for DSD and the full range of hi-res file formats, plus built-in Wi-Fi, transferring audio from your PC has never been easier. Navigate your entire collection with ease using the front-mounted LCD display screen or download the dedicated smartphone app to manage your music.

**Nature's design.**

**Natural sound.**

Sony engineers have long been obsessed by the challenge to recreate the experience of hearing music as performed in a live venue. Delivering that natural feel to listeners who share this passion was the driving force behind Sony's creation of the AR Series loudspeakers. Crafted from premium materials, these loudspeakers suppress unwanted vibrations while allowing controlled reverberation for incredibly rich sound.





## SS-AR1

The SS-AR1 speakers stand at the top of the class. Crafted from hand-selected Scandinavian Birch, they've received worldwide praise for their astonishing precision and clarity at any volume.



## SS-AR2

Crafted from the same premium materials as the SS-AR1, the SS-AR2 carries the sonic heritage of the SS-AR1 in a smaller package. The loudspeaker cabinet design produces rich, vivid sound.

## Sound that moves the soul

The entire Sony line of ES loudspeakers is designed with natural materials that deliver the most lifelike reproduction of music to a home theater with impactful excitement. Advanced driver technology and uncompromising cabinet construction create a family of loudspeakers that maintain the power and sonic integrity that the artist intended.



# SS-NA2ES

With a combination of advanced driver technology, innovative I-Array™ tweeter system, and uncompromising cabinet construction, the SS-NA2ES floor-standing loudspeaker delivers music that's powerful and natural with all of its sonic beauty intact.







## SS-NA5ES

These bookshelf speakers have been designed in the image of the floor-standing Sony SS-NA2ES loudspeakers, utilizing the same components, cabinet materials, and construction to create a listening experience with an exceptionally clear and wide soundstage.



## SS-NA8ES

The SS-NA8ES Home Theater Center Speaker incorporates breakthrough technology and craftsmanship to put the performance right in front of you. Five drivers, a bass reflex system, two woofers, and three soft-dome tweeters deliver incredible sound.



## SS-NA9ES

From the greatest musical compositions to explosive movie soundtracks, this subwoofer—handcrafted from European birch wood—produces bass with impressive depth and superb home theater-ready sound quality.

## Live in high resolution

Signature Series audio products elevate the high-resolution sound experience from one you listen to, to one you can feel. A true culmination of experience and fortitude, the Signature Series elevates music experiences to supreme dimensions.



*(also shown: NW-WM1Z  
Portable Digital Music Player)*



## SA-Z1

Experience the subtle nuances of every track with this near field speaker that's meticulously crafted to sit on your desk and provide astonishingly faithful, definitively expressive sound reproduction. Engineered in an effort to achieve ultimate sonic resolution and raw, live expression, the SA-Z1 creates a uniquely exquisite audio experience for music lovers.



## TA-ZH1ES

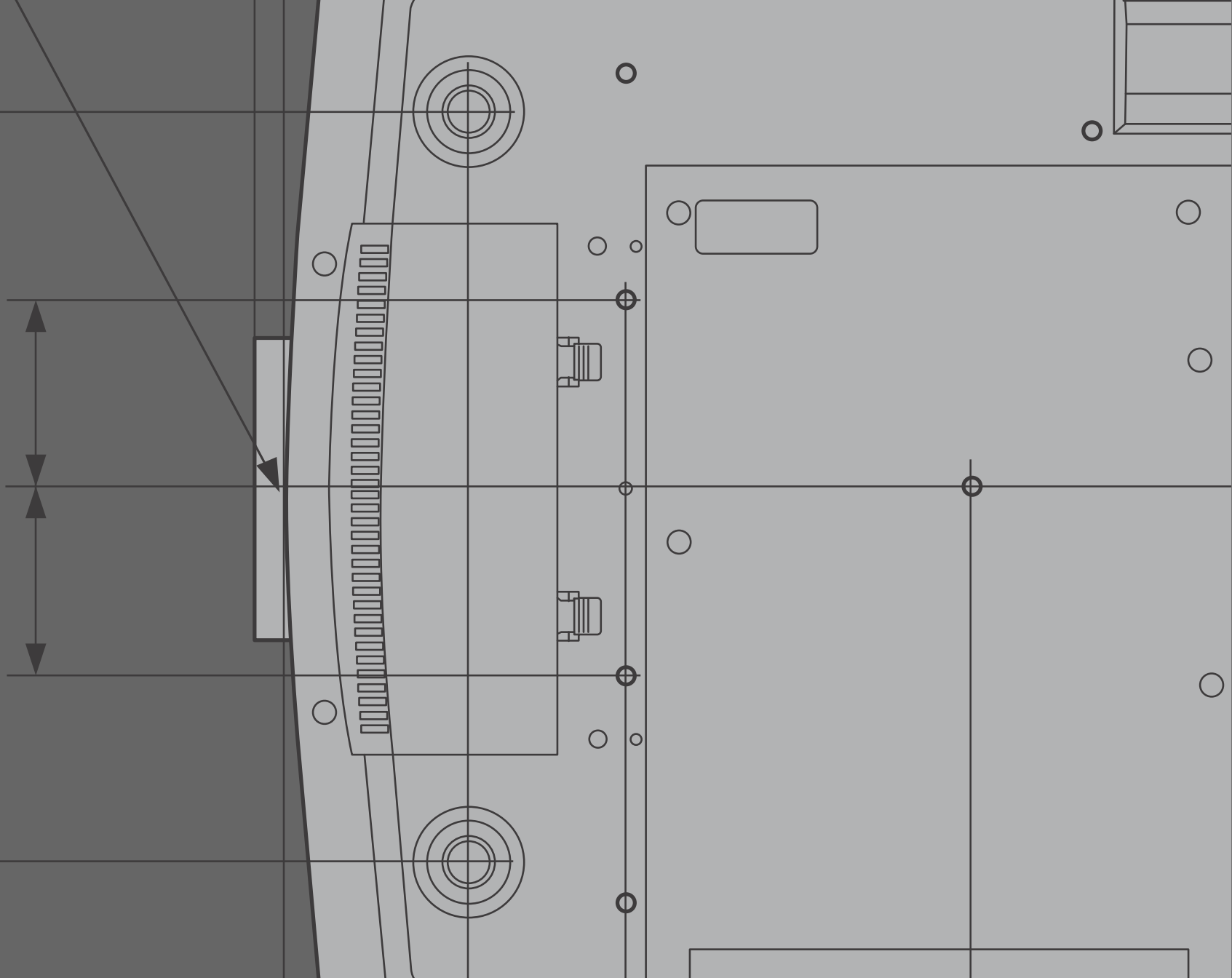
Unleash the full potential of your headphones with the Signature Series headphone amplifier and experience the emotional impact of every song, true to the original intent of the music. Combining a premium hybrid DA amplifier, the very best digital and analog sound technologies, and a chassis designed for perfect acoustics, it takes your headphones where they've never gone before.

# UBP-X800M2

Come home to a picture-perfect 4K UHD cinema experience with the X800M2 Blu-Ray Disc™ player. See and hear your favorite shows and movies in a new way with Dolby Vision™, HDR10, and High-Resolution Audio. Even your old favorites look great with 4K picture upscaling.<sup>3</sup> Create an authentic cinema atmosphere with Dolby Atmos<sup>®9</sup> and DTS:X<sup>®12</sup> compatibility.



01.3  
(37/32)(37/32)





## STANDARD POSITION

## A90J

83" 74<sup>1</sup>/<sub>8</sub> x 42<sup>1</sup>/<sub>4</sub> x 16<sup>7</sup>/<sub>8</sub>"65" 59<sup>1</sup>/<sub>4</sub> x 32<sup>7</sup>/<sub>8</sub> x 12<sup>1</sup>/<sub>2</sub>"55" 50<sup>1</sup>/<sub>2</sub> x 28 x 12<sup>1</sup>/<sub>2</sub>"

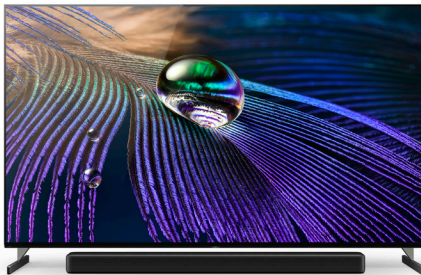
## A80J

77" 67<sup>7</sup>/<sub>8</sub> x 40<sup>1</sup>/<sub>4</sub> x 14<sup>1</sup>/<sub>2</sub>"65" 57<sup>1</sup>/<sub>8</sub> x 33<sup>7</sup>/<sub>8</sub> x 13"55" 48<sup>3</sup>/<sub>8</sub> x 29 x 13"

## Z9J

85" 76<sup>3</sup>/<sub>8</sub> x 44<sup>1</sup>/<sub>4</sub> x 19<sup>1</sup>/<sub>8</sub>"75" 67<sup>3</sup>/<sub>8</sub> x 39<sup>1</sup>/<sub>8</sub> x 16<sup>7</sup>/<sub>8</sub>"

## X95J

85" 74<sup>3</sup>/<sub>8</sub> x 43<sup>1</sup>/<sub>4</sub> x 17<sup>3</sup>/<sub>4</sub>"75" 65<sup>3</sup>/<sub>4</sub> x 38<sup>3</sup>/<sub>8</sub> x 15<sup>3</sup>/<sub>8</sub>"65" 56<sup>7</sup>/<sub>8</sub> x 33<sup>1</sup>/<sub>2</sub> x 13<sup>3</sup>/<sub>8</sub>"

## SOUNDBAR POSITION

## A90J

83" 74<sup>1</sup>/<sub>8</sub> x 44<sup>7</sup>/<sub>8</sub> x 16<sup>7</sup>/<sub>8</sub>"65" 56<sup>7</sup>/<sub>8</sub> x 35<sup>5</sup>/<sub>8</sub> x 12<sup>1</sup>/<sub>2</sub>"55" 48<sup>1</sup>/<sub>4</sub> x 30<sup>5</sup>/<sub>8</sub> x 12<sup>1</sup>/<sub>2</sub>"

## A80J

77" 67<sup>7</sup>/<sub>8</sub> x 42<sup>1</sup>/<sub>4</sub> x 14<sup>1</sup>/<sub>2</sub>"65" 57<sup>1</sup>/<sub>8</sub> x 35<sup>3</sup>/<sub>4</sub> x 13"55" 48<sup>3</sup>/<sub>8</sub> x 30<sup>7</sup>/<sub>8</sub> x 13"

## Z9J

85" 76<sup>3</sup>/<sub>8</sub> x 47<sup>1</sup>/<sub>4</sub> x 19<sup>1</sup>/<sub>8</sub>"75" 67<sup>3</sup>/<sub>8</sub> x 42<sup>1</sup>/<sub>8</sub> x 16<sup>7</sup>/<sub>8</sub>"

## X95J

85" 74<sup>3</sup>/<sub>8</sub> x 45<sup>5</sup>/<sub>8</sub> x 17<sup>3</sup>/<sub>4</sub>"75" 65<sup>3</sup>/<sub>4</sub> x 40<sup>3</sup>/<sub>4</sub> x 15<sup>3</sup>/<sub>8</sub>"65" 56<sup>7</sup>/<sub>8</sub> x 35<sup>3</sup>/<sub>4</sub> x 13<sup>3</sup>/<sub>8</sub>"

## NARROW POSITION

## A90J

83" 72<sup>7</sup>/<sub>8</sub> x 43<sup>3</sup>/<sub>8</sub> x 16<sup>7</sup>/<sub>8</sub>"

## A80J

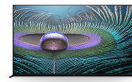
77" 67<sup>7</sup>/<sub>8</sub> x 40<sup>1</sup>/<sub>4</sub> x 14<sup>1</sup>/<sub>2</sub>"65" 57<sup>1</sup>/<sub>8</sub> x 33<sup>7</sup>/<sub>8</sub> x 13"55" 48<sup>3</sup>/<sub>8</sub> x 29 x 13"

## Z9J

85" 75<sup>1</sup>/<sub>8</sub> x 45 x 19<sup>1</sup>/<sub>8</sub>"75" 66<sup>1</sup>/<sub>4</sub> x 39<sup>7</sup>/<sub>8</sub> x 16<sup>7</sup>/<sub>8</sub>"

## X95J

85" 74<sup>3</sup>/<sub>8</sub> x 43<sup>3</sup>/<sub>4</sub> x 17<sup>3</sup>/<sub>4</sub>"75" 65<sup>3</sup>/<sub>4</sub> x 38<sup>7</sup>/<sub>8</sub> x 15<sup>3</sup>/<sub>8</sub>"



	Z9J	A90J	A80J	A9S	X95J	X90J	X91J	X85J	X80J
<b>SCREEN SIZE</b>	85" Class (84.6" diag.) 75" Class (74.5" diag.)	83" Class (82.5" diag.) 65" Class (64.5" diag.) 55" Class (54.6" diag.)	77" Class (76.7" diag.) 65" Class (64.5" diag.) 55" Class (54.6" diag.)	48" Class (47.5" diag.)	85" Class (84.6" diag.) 75" Class (74.5" diag.) 65" Class (64.5" diag.)	75" Class (74.5" diag.) 65" Class (64.5" diag.) 55" Class (54.6" diag.) 50" Class (49.5" diag.) <b>X92: 100" Class (99.5" diag.)</b>	85" Class (84.6" diag.)	85" Class (84.6" diag.) 75" Class (74.5" diag.) 65" Class (64.5" diag.) 55" Class (54.6" diag.) 50" Class (49.5" diag.) 43" Class (42.5" diag.)	75" Class (74.5" diag.) 65" Class (64.5" diag.) 55" Class (54.6" diag.) 50" Class (49.5" diag.) 43" Class (42.5" diag.)
<b>DISPLAY TYPE</b>	LED	OLED	OLED	OLED	LED	LED	LED	LED	LED
<b>DISPLAY RESOLUTION</b>	8K HDR (7680 x 4320)	4K HDR (3840 x 2160)	4K HDR (3840 x 2160)	4K HDR (3840 x 2160)	4K HDR (3840 x 2160)	4K HDR (3840 x 2160)	4K HDR (3840 x 2160)	4K HDR (3840 x 2160)	4K HDR (3840 x 2160)
<b>PICTURE PROCESSOR</b>	Cognitive Processor XR	Cognitive Processor XR	Cognitive Processor XR	Picture Processor X1™ Ultimate	Cognitive Processor XR	Cognitive Processor XR	4K HDR Processor X1™	4K HDR Processor X1™	4K HDR Processor X1™
<b>COLOR ENHANCEMENT</b>	XR Triluminos PRO™	XR Triluminos PRO™	XR Triluminos PRO™	TRILUMINOS™	XR Triluminos PRO™	XR Triluminos PRO™	TRILUMINOS™	TRILUMINOS PRO™	TRILUMINOS PRO™
<b>CLARITY ENHANCEMENT<sup>2,3</sup></b>	XR 8K Upscaling Dual database processing XR Super Resolution	XR 4K Upscaling Dual database processing XR Super Resolution	XR 4K Upscaling Dual database processing XR Super Resolution	4K X-Reality™ PRO Dual database processing Object-based Super Resolution	XR 4K Upscaling Dual database processing XR Super Resolution	XR 4K Upscaling Dual database processing XR Super Resolution	4K X-Reality™ PRO	4K X-Reality™ PRO	4K X-Reality™ PRO
<b>CONTRAST ENHANCEMENT</b>	Full Array LED XR Contrast Booster 15	XR OLED Contrast Pro	XR OLED Contrast	Pixel Contrast Booster™	Full Array LED XR Contrast Booster 10	Full Array LED XR Contrast Booster 5	Full Array LED X-tended Dynamic Range™	Dynamic Contrast Enhancer	Dynamic Contrast Enhancer
<b>HDR CERTIFICATION</b>	HDR 10, HLG, DV & IMAX® Enhanced <sup>4</sup>	HDR 10, HLG, DV, & IMAX® Enhanced <sup>4</sup>	HDR 10, HLG, DV & IMAX® Enhanced <sup>4</sup>	HDR 10, HLG, DV & IMAX® Enhanced <sup>4</sup>	HDR 10, HLG, DV & IMAX® Enhanced <sup>4</sup>	HDR 10, HLG, DV & IMAX® Enhanced <sup>4</sup>	HDR 10, HLG & DV	HDR 10, HLG & DV	HDR 10, HLG, & DV
<b>SPEAKER TECHNOLOGY</b>	Acoustic Multi-Audio with Frame Tweeters & Center Speaker Mode	Acoustic Surface Audio+ & Center Speaker Mode	Acoustic Surface Audio+	Acoustic Surface Audio	Acoustic Multi-Audio	Acoustic Multi-Audio (Excluding X92)	Acoustic Multi-Audio	X-Balanced Speakers	X-Balanced Speakers
<b>GOOGLE TV</b> Google Assistant, Apple HomeKit & AirPlay 2 <sup>5,11</sup>	●	●	●	●	●	●	●	●	●
<b>ANDROID TV</b> Google Assistant, Apple HomeKit & AirPlay 2 <sup>11</sup>				●					
<b>VOICE SEARCH</b>	Hands-free Voice Search & Voice Remote	Hands-free Voice Search & Voice Remote	Voice Remote	Voice Remote	Hands-free Voice Search & Voice Remote	Voice Remote	Voice Remote	Voice Remote	Voice Remote
<b>WI-FI STANDARD</b> Wi-Fi Certified 802.11a/b/g/n/ac	●	●	●	●	●	●	●	●	●
<b>CONTROL TYPE</b>	IP/IR/RS232	IP/IR/RS232	IP/IR/RS232	IP/IR/RS232	IP/IR/RS232	IP/IR/RS232	IP/IR/RS232	IP/IR/RS232	IP/IR/RS232
<b>HDMI PORTS<sup>4</sup></b>	2x HDMI 2.1 (eARC / ALLM / VRR <sup>4</sup> / 4K120 / 8K60) 2x HDMI 2.0	2x HDMI 2.1 (eARC / ALLM / VRR <sup>4</sup> / 4K120) 2x HDMI 2.0	2x HDMI 2.1 (eARC / ALLM / VRR <sup>4</sup> / 4K120) 2x HDMI 2.0	4x HDMI 2.0 (eARC)	2x HDMI 2.1 (eARC / ALLM / VRR <sup>4</sup> / 4K120) 2x HDMI 2.0	2x HDMI 2.1 (eARC / ALLM / VRR <sup>4</sup> / 4K120) 2x HDMI 2.0	2x HDMI 2.1 (eARC / ALLM / VRR <sup>4</sup> / 4K120) 2x HDMI 2.0	2x HDMI 2.1 (eARC / ALLM / VRR <sup>4</sup> / 4K120) 2x HDMI 2.0	4x HDMI 2.0 (eARC)
<b>TV WITHOUT STAND</b>	85"-75 1/8 x 43 3/8 x 3 1/4" 75"-66 1/4 x 38 3/4 x 3 1/4"	83"-72 1/8 x 42 1/8 x 2 1/8" 65"-56 1/8 x 32 1/8 x 1 3/8" 55"-48 1/4 x 28 x 1 1/8"	77"-67 1/8 x 39 3/8 x 2 1/4" 65"-57 1/8 x 33 x 2 1/8" 55"-48 3/8 x 28 1/8 x 2 1/8"	48"-42 1/8 x 24 3/8 x 2 3/8"	85"-74 3/8 x 42 1/8 x 2 1/2" 75"-65 3/4 x 37 1/8 x 2 1/2" 65"-56 1/8 x 32 1/8 x 2 3/8"	75"-66 x 37 1/8 x 2 1/8" 65"57 1/4 x 32 1/8 x 2 1/8" 55"-48 5/8 x 28 x 2 1/8" 50"-44 1/8 x 25 3/8 x 2 1/8" 100"-89 x 51 1/8 x 3 1/8"	85"-74 1/8 x 42 1/8 x 2 1/8"	85"-74 1/8 x 42 1/8 x 2 1/8" 75"-66 x 37 1/8 x 2 1/8" 65"-57 1/4 x 32 1/8 x 2 1/8" 55"-48 5/8 x 28 x 2 1/8" 50"-44 1/8 x 25 3/8 x 2 1/8" 43"-38 x 22 1/4 x 2 3/4"	75"-66 1/2 x 38 1/4 x 2 1/8" 65"-57 5/8 x 33 1/4 x 2 1/8" 55"-49 x 28 3/8 x 2 1/8" 50"-44 3/8 x 25 3/8 x 2 1/8" 43"-38 3/8 x 22 3/8 x 2 1/8"
<b>TV WITH STAND</b>	85"-76 3/8 x 44 1/4 x 19 1/8" 75"-67 3/8 x 39 1/8 x 16 7/8"	83"-74 1/8 x 42 1/4 x 16 7/8" 65"-59 1/4 x 32 1/8 x 12 1/2" 55"-50 1/2 x 28 x 12 1/2"	77"-67 1/8 x 40 1/4 x 14 1/2" 65"-57 1/8 x 33 3/8 x 13" 55"-48 3/8 x 29 x 13"	48"-42 1/8 x 24 7/8 x 10 1/8"	85"-74 3/8 x 43 1/4 x 17 3/4" 75"-65 3/4 x 38 3/8 x 15 3/8" 65"-56 1/8 x 33 1/2 x 13 3/8"	75"-66 x 41 x 16 1/4" 65"57 1/4 x 35 3/4 x 13 3/8" 55"-48 5/8 x 30 7/8 x 13 3/8" 50"-44 1/8 x 28 1/4 x 11 3/8" 100"-89 x 53 x 18 3/4"	85"-74 1/8 x 45 3/4 x 17 3/8"	85"-74 1/8 x 46 3/8 x 18" 75"-66 x 41 x 16 1/4" 65"-57 1/4 x 35 3/4 x 13 3/8" 55"-48 5/8 x 30 7/8 x 13 3/8" 50"-44 1/8 x 28 1/4 x 11 3/8" 43"-38 x 24 3/4 x 11 3/8"	75"-66 1/2 x 41 1/4 x 16 1/4" 65"-57 5/8 x 36 x 13 3/8" 55"-49 x 31 x 13 3/8" 50"-44 3/8 x 28 3/8 x 11 3/8" 43"-38 3/8 x 25 x 11 3/8"
<b>VESA® HOLE PITCH</b>	85"-400 x 400 mm 75"-400 x 400 mm	83"-400 x 400 mm 65"-300 x 300 mm 55"-300 x 300 mm	77"-300 x 300 mm 65"-300 x 300 mm 55"-300 x 300 mm	48"-300 x 300 mm	85"-400 x 400 mm 75"-300 x 300 mm 65"-300 x 300 mm	75"-300 x 300 mm 65"-300 x 300 mm 55"-300 x 300 mm 50"-200 x 300 mm 100"-600 x 400 mm	85"-400 x 400 mm	85"-400 x 400 mm 75"-300 x 300 mm 65"-300 x 300 mm 55"-300 x 300 mm 50"-200 x 200 mm 43"-200 x 200 mm	75"-300 x 300 mm 65"-300 x 300 mm 55"-300 x 300 mm 50"-200 x 200 mm 43"-200 x 200 mm
<b>TV WITHOUT STAND</b>	85"-136.0 lb 75"-102.3 lb	83"-92.6 lb 65"-49.6 lb 55"-41 lb	77"-63.7 lb 65"-49.2 lb 55"-39.3 lb	48"-30.7 lb	85"-107.3 lb 75"-81.1 lb 65"-60.6 lb	75"-73.4 lb 65"-50.5 lb 55"-38.4 lb 50"-29.8 lb 100"-195.9 lb	85"-100.9 lb	85"-98.1 lb 75"-71.9 lb 65"-48.7 lb 55"-37.1 lb 50"-28.0 lb 43"-22.5 lb	75"-69.7 lb 65"-47.6 lb 55"-34.6 lb 50"-27.1 lb 43"-22.1 lb
<b>TV WITH STAND</b>	85"-139.7 lb 75"-105.8 lb	83"-95.9 lb 65"-54.2 lb 55"-44.8 lb	77"-66.3 lb 65"-51.8 lb 55"-41.9 lb	48"-38.8 lb	85"-112.8 lb 75"-86.2 lb 65"-62.8 lb	75"-76.0 lb 65"-52.5 lb 55"-40.4 lb 50"-31.1 lb 100"-204 lb	85"-105.1 lb	85"-101.4 lb 75"-74.5 lb 65"-50.7 lb 55"-39.0 lb 50"-29.3 lb 43"-23.6 lb	75"-72.5 lb 65"-49.6 lb 55"-36.6 lb 50"-28.5 lb 43"-23.2 lb

2021 Projectors



	VPL-GTZ380	VPL-VW5000ES	VPL-VW1025ES	VPL-VW915ES	VPL-VW1000ES	VPL-VW715ES	VPL-VW325ES	VPL-HW65ES
LIGHT SOURCE	Z-Phosphor Laser light source	Z-Phosphor Laser light source	Z-Phosphor Laser light source	Z-Phosphor Laser light source	Z-Phosphor Laser light source Ultra Short Throw	Lamp	Lamp	Lamp
RESOLUTION	4K HDR	4K HDR	4K HDR	4K HDR	4K HDR	4K HDR	4K HDR	Full HD 1080
BRIGHTNESS	10,000 lm	5,000 lm	2,200 lm	2,000 lm	2,500 lm	1,800 lm	1,500 lm	1,800 lm
DYNAMIC CONTRAST	∞ to 1 with Dynamic laser control	∞ to 1 with Dual contrast control engine	∞ to 1 with Dual contrast control engine	∞ to 1 with Dual contrast control engine	∞ to 1 Dynamic laser control	350,000:1 Advanced Iris	–	120,000:1 Advanced Iris
COLOR SPACE	DCI / P3 Triluminos™ Display	DCI / P3 Triluminos™ Display	Triluminos™ Display	Triluminos™ Display	Triluminos™ Display	Triluminos™ Display	Triluminos™ Display	–
PICTURE POSITION MEMORY	Auto	Auto	Auto	Auto	N/A	Auto	N/A	N/A
LENS	ARC-F with Digital Focus Optimizer	ARC-F with Digital Focus Optimizer	ARC-F with Digital Focus Optimizer	4K lens with DFO, Aspherical front element	Ultra Short-Throw Lens with Digital Focus Optimizer	4K lens with DFO, Aspherical front element	4K lens, Aspherical front element	Standard HD Lens
REPLACEMENT LAMPS	–	–	–	–	–	LMP-H280	LMP-H220	LMP-H210
ACCESSORIES LENS	VPLL-Z8014 (Standard ARC-F) VPLL-Z8008 (Short throw)	VPLL-Z7008 (Short throw)	VPLL-Z7008 (Short throw)	–	–	–	–	–

ACCESSORIES



**LMP-H210**  
(replacement lamp)



**LMP-H280**  
(replacement lamp)



**LMP-H220**  
(replacement lamp)



**VPLL-Z7008**  
(optional lens)



**VPLL-Z7013**  
(bundled lens)



**VPLL-Z8014**  
(optional lens)



**VPLL-Z8008**  
(optional lens)



## 2021 Receivers



	STR-ZA5000ES	STR-ZA3100ES	STR-ZA2100ES	STR-ZA1100ES
AMPLIFICATION	130w x 9 channels @8ohms 4-16 ohm stable	110w x 7 channels @8ohms 6-16 ohm stable	105w x 7 channels @8ohms 6-16 ohm stable	100w x 7 channels @8ohms 6-16 ohm stable
HT DECODED CHANNELS PRE-AMP OUTPUTS	11.1 channels Front / Center / Surround / Surround Back / Height 1 / Height 2 / Sub	9.1 channels Front / Center / Surround / Surround Back / Height / Sub	9.1 channels Height / Sub	7.1 channels Sub
2CH PHANTOM REAR CHANNELS		Yes	Yes	Yes
HDMI IN/OUT	6/2 HDMI 2.0B HDCP 2.2 4K 60p 4:4:4 (except front input)	6/2 HDMI 2.0B HDCP 2.2 4K 60p 4:4:4 (except front input)	6/2 HDMI 2.0B HDCP 2.2 4K 60p 4:4:4 (except front input)	5/2 HDMI 2.0B HDCP 2.2 4K 60p 4:4:4
AUDIO CALIBRATION	Yes + D.C.A.C. EX	Yes + D.C.A.C. EX	Yes + D.C.A.C. EX	Yes + D.C.A.C. EX
NETWORK CONNECTIVITY	8 port Gigabit Switch w/2 POE	8 port Gigabit Switch w/2 POE	Single ethernet jack	Single ethernet jack
MULTI-ZONE	Zone 2 all sources Zone 3 analog sources only	Zone 2 all sources Zone 3 analog sources only	Zone 2 all sources Zone 3 analog sources only	Zone 2 all sources Zone 3 analog sources only
CONFIGURATION METHODS	Front Panel-Onscreen-Web Archivable via USB	Front Panel-Onscreen-Web Archivable via USB	Front Panel-Onscreen-Web Archivable via USB	Front Panel-Onscreen-Web Archivable via USB
RACK MOUNTABLE	Yes	Yes	Yes	Yes
SURROUND MODES <sup>2†</sup>	DTS:X <sup>®</sup> Dolby Atmos <sup>®</sup>	DTS:X <sup>®</sup> Dolby Atmos <sup>®</sup>	DTS:X <sup>®</sup> Dolby Atmos <sup>®</sup>	DTS:X <sup>®</sup> Dolby Atmos <sup>®</sup>
CONTROL IR / RS232 / IP	Yes	Yes	Yes	Yes
5 YEAR ES WARRANTY	Yes	Yes	Yes	Yes
SPECIAL FEATURES <sup>8</sup>	In-ceiling Speaker Mode Music Connect IMAX Enhanced	In-ceiling Speaker Mode Music Connect IMAX Enhanced	In-ceiling Speaker Mode Music Connect IMAX Enhanced	In-ceiling Speaker Mode Music Connect IMAX Enhanced

## 2021 Speakers

	SS-AR1	SS-AR2	SS-NA2ES	SS-NA5ES	SS-NA8ES	SA-NA9ES	SA-Z1
SYSTEM	4-unit, 3-way, floor standing vented box	4-unit, 3-way, floor standing vented box	3-way, 6-driver, bass reflex	3-way, 4-driver, bass reflex	3-way, 5-driver, bass reflex	Active subwoofer system	2-way, 5-speaker system
DRIVERS	25mm soft-dome 130mm sliced-paper cone Twin 200mm aluminum-cones	25mm soft-dome 130mm sliced-paper cone Twin 165mm aluminum-cones	25mm soft-dome tweeter Two 19mm soft-dome tweeters 130mm paper-cone midrange Two double-drive 165mm aluminum-cone woofers	25mm soft-dome tweeter Two 19mm soft-dome tweeters 130mm aluminum-cone woofer	25mm soft-dome tweeter Two 19mm soft-dome tweeters Two 130mm aluminum-cone woofers	Two 250mm aluminum-cone woofers	19mm soft-dome tweeter 14mm soft-dome assist tweeter 100mm cone main woofer 100mm cone assist woofer
FREQUENCY RESPONSE	28 Hz to 60 kHz	42 Hz to 60 kHz	45 Hz to 45 kHz (-10dB)	45 Hz to 45 kHz (-10dB)	45 Hz to 45 kHz (-10dB)	20–200 Hz	51 Hz–100 kHz (-10 dB)
SENSITIVITY	88dB (2.83 V/m)	89dB (2.83 V/m)	90dB (2.83 V/m)	86dB (2.83 V/m)	88dB (2.83 V/m)	—	—
NOMINAL IMPEDANCE	4 ohms	4 ohms	4 ohms	4 ohms	4 ohms	—	—
INPUT POWER	200 watts	100 watts	100 watts (non-clipping)	70 watts (non-clipping)	100 watts (non-clipping)	—	106 watts
DIMENSIONS <i>Including projecting parts</i>	12 <sup>5</sup> / <sub>8</sub> " x 42 <sup>5</sup> / <sub>8</sub> " x 19 <sup>3</sup> / <sub>8</sub> "	11 <sup>1</sup> / <sub>8</sub> " x 38 <sup>5</sup> / <sub>8</sub> " x 16 <sup>1</sup> / <sub>4</sub> "	10" x 35.4" x 16.3"	8" x 14" x 12.8"	19.3" x 8.1" x 12.8"	14.8" x 17.7" x 19.5"	7 <sup>7</sup> / <sub>8</sub> " x 8 <sup>1</sup> / <sub>4</sub> " x 12 <sup>3</sup> / <sub>8</sub> "
WEIGHT	126 lbs. (57 kg)	84 lbs. (38 kg)	70.5 lbs. (32 kg)	22 lbs. (10 kg)	22 lbs. (10 kg)	79 lbs. (36 kg)	23.15 lbs. (10.5 kg)
SUPPLIED ACCESSORIES	Speaker grills (2) Cleaning cloth	Speaker grills (2) Cleaning cloth	—	—	—	—	—

Use of the TVs require consent to Google Terms of Use and Privacy Policy.

<sup>1</sup> As of 11/18/20, Cognitive Processor XR cross-analyses multiple picture elements combined with focal points; recreating human perspective. Verified by Strategy Analytics. <sup>2</sup> 8K: 7,680 x 4,320 pixels. Upscaled, simulated and enhanced 8K images will vary based on source content. <sup>3</sup> 4K: 3,840 x 2,160 pixels. Upscaled, simulated and enhanced 4K images will vary based on source content. <sup>4</sup> Game title supporting 4K/120fps required. VRR will be available by future firmware update. X85J series, firmware update for VRR will be available by end of 2021. <sup>5</sup> User must accept Google Terms of Service (<http://www.google.com/policies/terms/>), Play Terms of Service ([https://play.google.com/intl/en-US\\_us/about/play-terms/index.html](https://play.google.com/intl/en-US_us/about/play-terms/index.html)) and Privacy Policy (<http://www.google.com/policies/privacy/>) to use TV. User must connect to a Google account to use certain advertised features, including voice to activate linked apps, and install certain apps and operating software during setup. Use of TV without connecting to a Google account allows only basic TV features and certain apps. Wireless connectivity requires 802.11 home network (802.11n recommended). Network services, content, operating system and software of this product may be subject to separate or third-party terms and conditions and changed, interrupted or discontinued at any time and may require fees, registration and credit card information. Apps must be compatible with TV. App availability varies by region and device. <sup>6</sup> Purchase an eligible TV and register for BRAVIA CORE™ by February 23, 2024 to be eligible for promotion offers. Available movies subject to change. Terms and conditions apply, for full details see <https://www.sony.net/bravia-core>. © 2021 Layout and Design Sony Pictures Home Entertainment Inc. All Rights Reserved. Network services, content, and operating system and software of product may be subject to separate or third-party terms and conditions and changed, interrupted or discontinued at any time and may require fees, registration and credit card information. <sup>7</sup> User must setup broadband network environment. By default, Pure Stream setting is turned OFF and must be turned ON in BRAVIA CORE settings. BRAVIA CORE offers streaming between 30Mbps–80Mbps once user turns ON Pure Stream. To access Pure Stream at 30Mbps, user must have a minimum internet speed of 43Mbps over Wi-Fi. To access highest quality Pure Stream available at 80Mbps user must have minimum internet speed of 115Mbps over Wi-Fi. Subject to user's network operator's video streaming restrictions, BRAVIA CORE automatically selects the best bitrate as following with adaptive streaming functionality based on the internet speed available. <sup>8</sup> IMAX Enhanced content enables full IMAX Enhanced experience with compatible streaming services such as Fandango Now (US only) and BRAVIA CORE, or compatible content device connected via HDMI input (sold separately). <sup>9</sup> Dolby Vision content compatible with streaming services or compatible content device connected via HDMI input (sold separately). <sup>10</sup> Netflix streaming membership required. 4K Ultra HD availability subject to your Netflix subscription plan, internet service, device capabilities, and content availability. <http://www.netflix.com/termsfuse>. <sup>11</sup> This Sony TV is compatible with AirPlay 2 and HomeKit. iOS 12.2 or later or macOS 10.14.4 or later is required. Apple ID account required. Subscriptions may be required to access certain content. <sup>12</sup> May require HDMI® cable, DTS:X media and DTS:X capable playback device sold separately. <sup>13</sup> Power output and total harmonic distortion: measured at 2 ohms, from 28–200 Hz; rated 130 W, minimum RMS power, with no more than 1% total harmonic distortion from 250 mW to rated output. Power output (reference) 300 W (at 2 ohms, 100 Hz). <sup>14</sup> Power output and total harmonic distortion; measured at 2 ohms, from 28–200 Hz; rated 130 W, minimum RMS power, with no more than 1% total harmonic distortion from 250 mW to rated output. Power output 200 W (at 2 ohms, 100 Hz). <sup>15</sup> One Terabyte (1TB) = 1,000 Gigabytes (GB). Actual formatted capacity will be less.

© 2021 Sony Electronics Inc. All rights reserved. Reproduction in whole or in part without written permission is prohibited.

Sony, BRAVIA, BRAVIA XR, Cognitive Processor XR, XR Triluminos Pro, XR Motion Clarity, BRAVIA CORE, and the Sony logo are trademarks of Sony Corporation. Google TV is the name of this device's software experience. Google, YouTube, YouTube Music, Google TV and other marks are trademarks of Google LLC. All other trademarks are trademarks of their respective owners. Features and specifications are subject to change without notice. Screen images simulated.

**SONY**