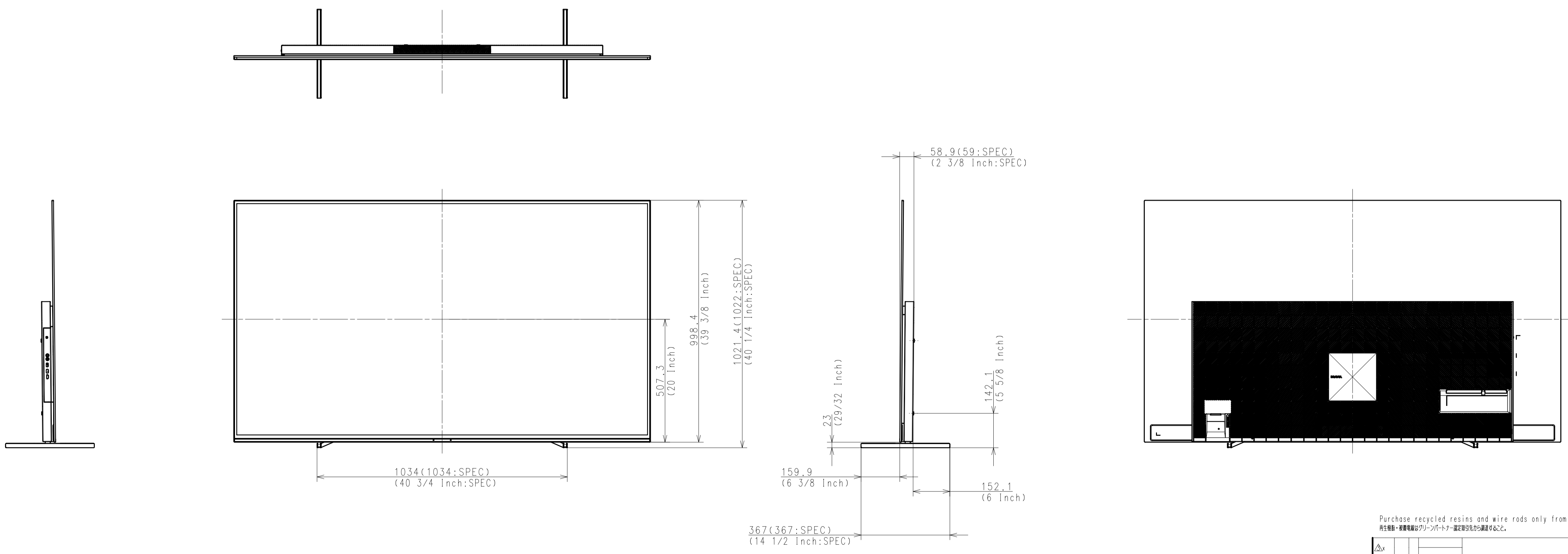


Area		JAPAN	NORTH AMERICA	LATIN AMERICA	EUROPE	GENERAL AREA	CHINA
Model Name		XRJ-77A80J	XR-77A80J	XR-77A80J	XR-77A80J	XR-77A80J	XR-77A80J
SV No.		SV-39372	SV-39178	SV-39197	SV-39341	SV-39227	SV-39305
DIMENSION	TV only (W x H x D)	172.2 x 99.9 x 5.4 (0.69) cm	1722 x 999 x 54 (6.9) mm / 67 7/8 x 39 3/8 x 2 1/4 (9/32) inch	1722 x 999 x 54 (6.9) mm	Approx. 172.2 x 99.9 x 5.4 (0.69) cm	Approx. 1722 x 999 x 54 (6.9) mm	Approx. 1722 x 999 x 54 (6.9) mm
	TV with Stand (Standard position) (W x H x D)	172.2 x 102.2 x 36.7 cm	1722 x 1022 x 367 mm / 67 7/8 x 40 1/4 x 14 1/2 inch	1722 x 1022 x 367 mm	Approx. 172.2 x 102.2 x 36.7 cm	Approx. 1722 x 1022 x 367 mm	Approx. 1722 x 1022 x 367 mm
	TV with Stand (Narrow position) (W x H x D)	172.2 x 102.2 x 36.7 cm	1722 x 1022 x 367 mm / 67 7/8 x 40 1/4 x 14 1/2 inch	1722 x 1022 x 367 mm	Approx. 172.2 x 102.2 x 36.7 cm	Approx. 1722 x 1022 x 367 mm	Approx. 1722 x 1022 x 367 mm
	TV with Stand (Soundbar position) (W x H x D)	172.2 x 107.1 x 36.7 cm	1722 x 1071 x 367 mm / 67 7/8 x 42 1/4 x 14 1/2 inch	1722 x 1071 x 367 mm	Approx. 172.2 x 107.1 x 36.7 cm	Approx. 1722 x 1071 x 367 mm	Approx. 1722 x 1071 x 367 mm
	TV with Floor Stand (W x H x D)	-	-	-	-	-	-
	Stand Width (Standard position)	103.4 cm	1034 mm / 40 3/4 inch	1034 mm	Approx. 103.4 cm	Approx. 1034 mm	Approx. 1034 mm
	Stand Width (Narrow position)	69.2 cm	692 mm / 27 1/4 inch	692 mm	Approx. 69.2 cm	Approx. 692 mm	Approx. 692 mm
	Stand Width (Soundbar position)	103.6 cm	1036 mm / 40 7/8 inch	1036 mm	Approx. 103.6 cm	Approx. 1036 mm	Approx. 1036 mm
	Floor Stand Width	-	-	-	-	-	-
	VESA Hole Pitch	30.0 x 30.0 cm	300 x 300 mm / 11 7/8 x 11 7/8 inch	300 x 300 mm	30.0 x 30.0 cm	300 x 300 mm	300 x 300 mm
WEIGHT	TV Only	28.9 kg	28.9 kg / 63.7 lb	28.9 kg	Approx. 28.9 kg	Approx. 28.9 kg	Approx. 28.9 kg
	TV with Stand (Standard position)	30.1 kg	30.1 kg / 66.3 lb	30.1 kg	Approx. 30.1 kg	Approx. 30.1 kg	Approx. 30.1 kg
	TV with Stand (Narrow position)	30.1 kg	30.1 kg / 66.3 lb	30.1 kg	Approx. 30.1 kg	Approx. 30.1 kg	Approx. 30.1 kg
	TV with Stand (Soundbar position)	30.1 kg	30.1 kg / 66.3 lb	30.1 kg	Approx. 30.1 kg	Approx. 30.1 kg	Approx. 30.1 kg
	TV with Floor Stand	-	-	-	-	-	-
	Floor Stand weight (Supply)	-	-	-	-	-	-
	W-M t Br. Weight (Supply)	-	-	-	-	-	-
Remarks		3Way	3Way	3Way	3Way	3Way	3Way

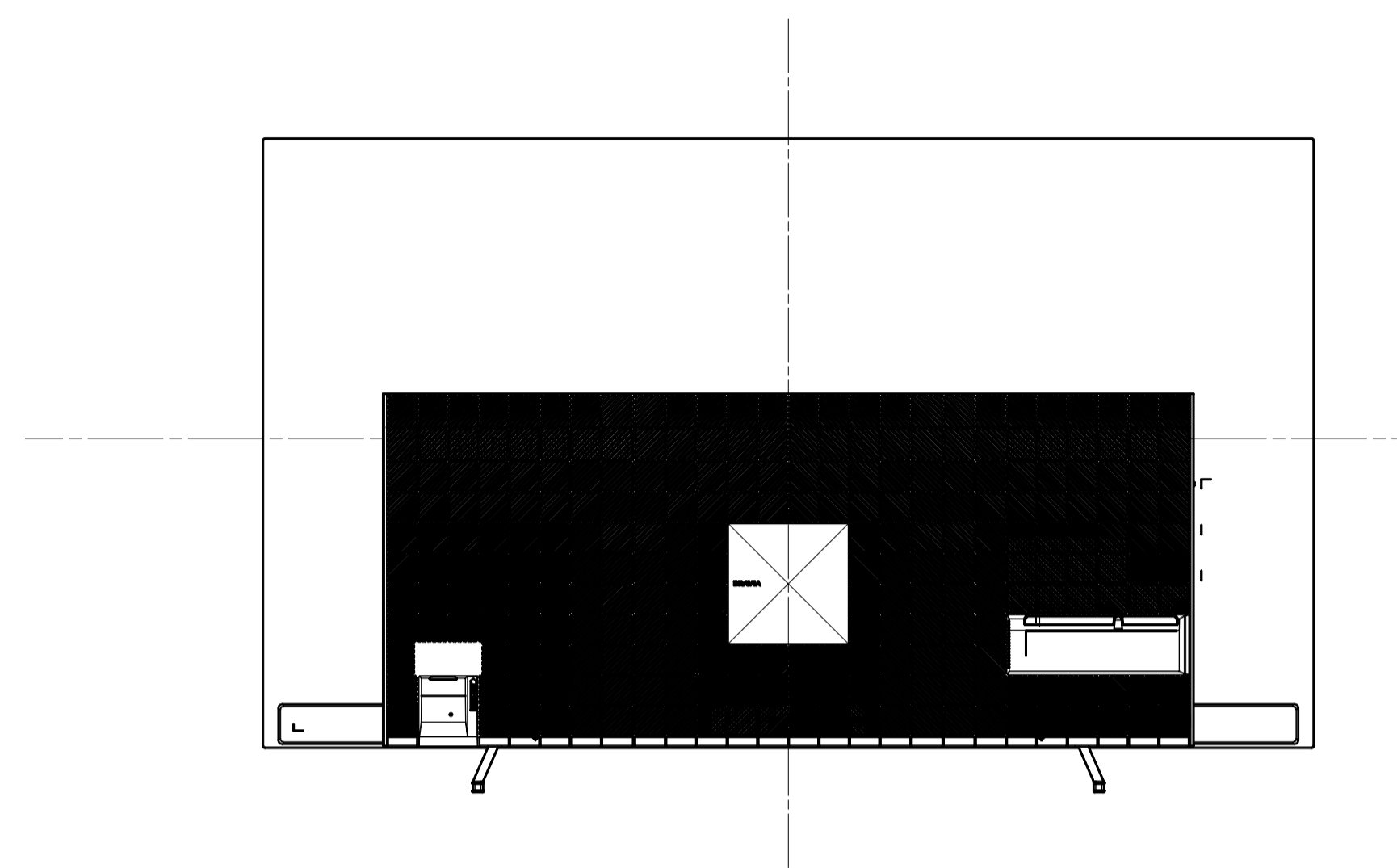
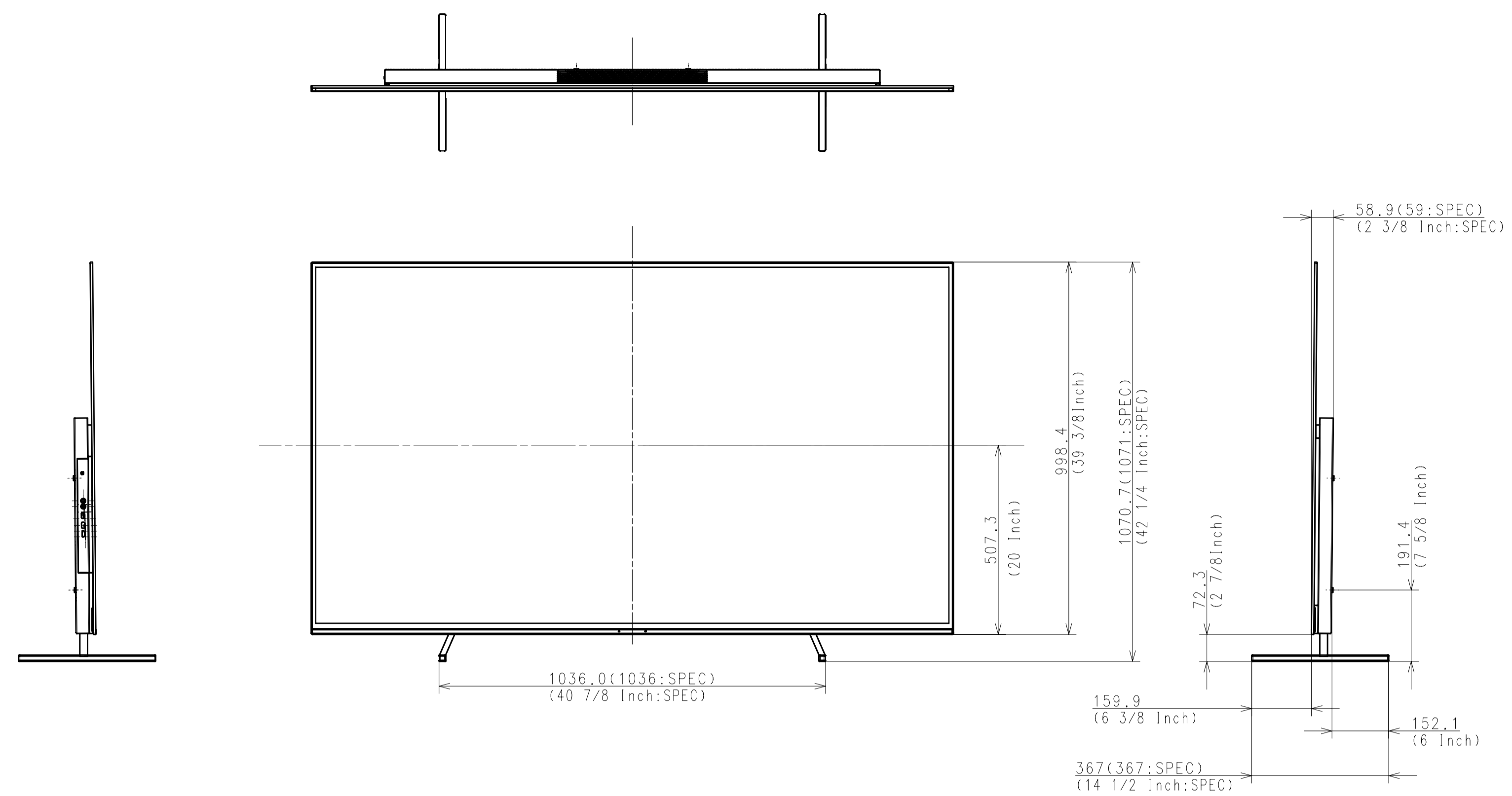
WITH STAND
STANDARD POSITION



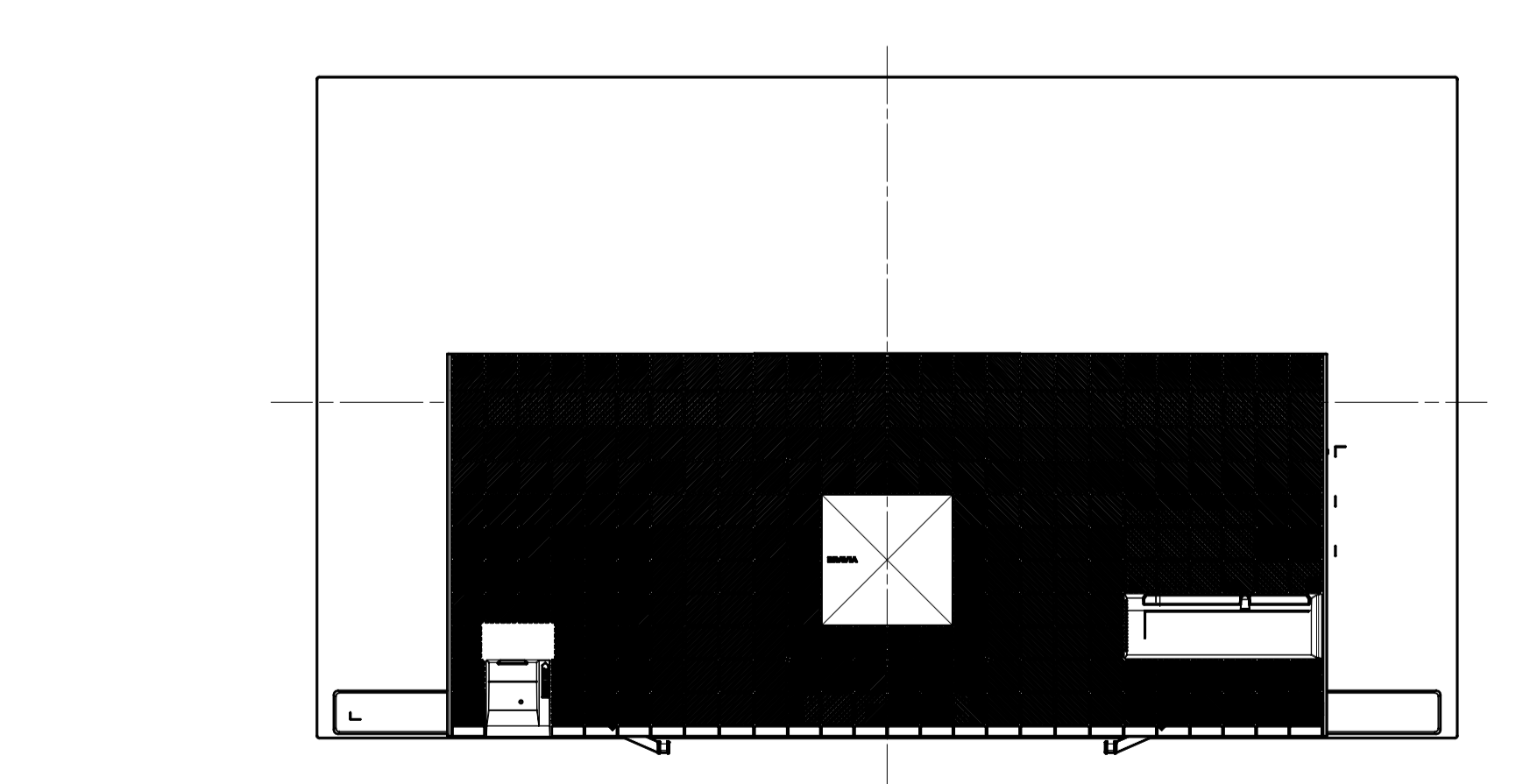
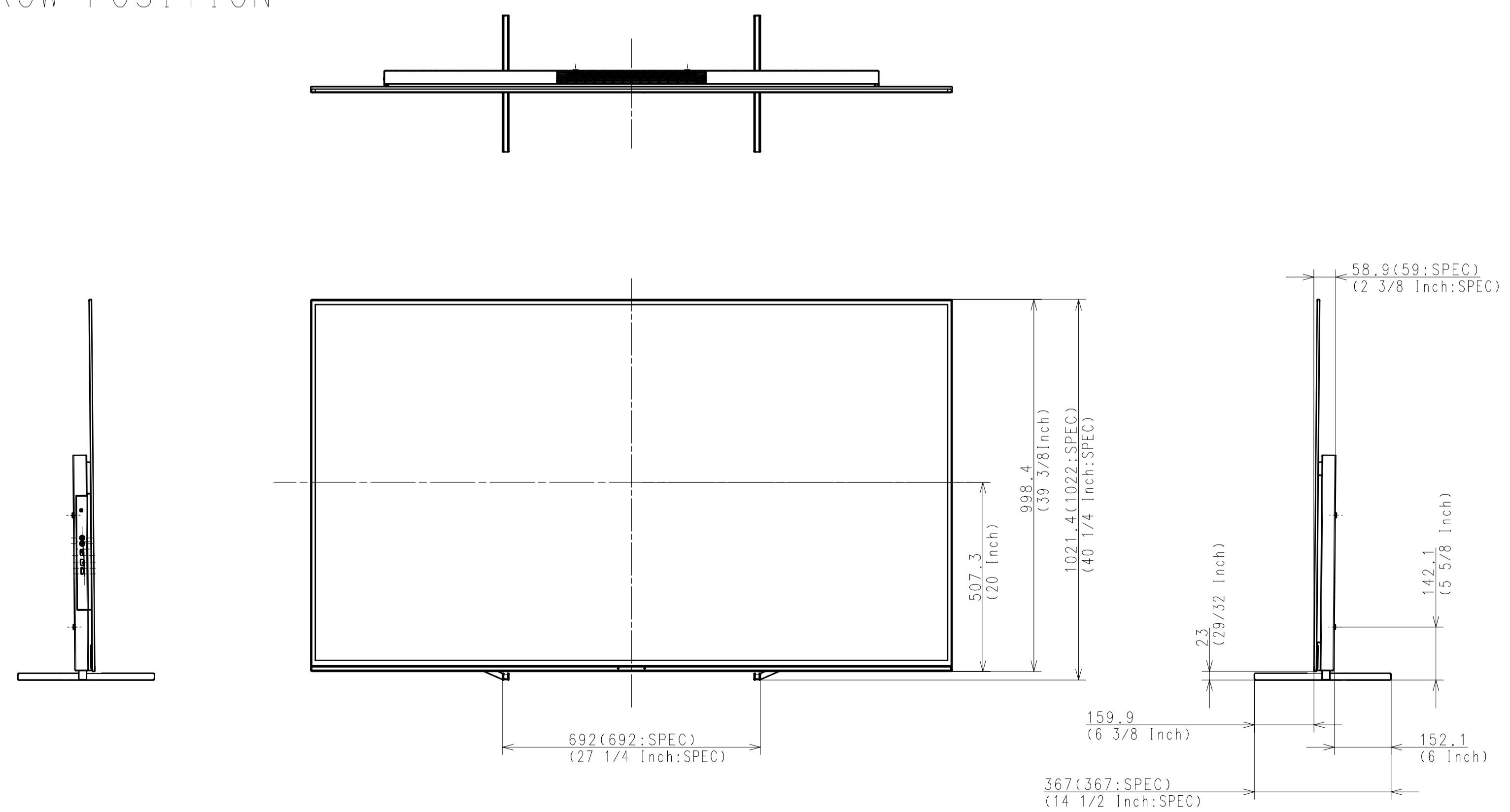
Purchase recycled resins and wire rods only from the business partners that Sony approves as Green Partners.
再生樹脂・銅線材はグリーンパートナー・協賛先から調達すること。

△A						GENERAL TOLERANCE	DATE OF ISSUE	
△A							2020.10.22	
△A							DOCUMENT TYPE	
							PART	
							DRAWING	
							(JIS 9 002(ISO 001))	
HISTORY	SUFFIX	RELEASE NO.	REVISION	DATE	DATE	MATERIAL COLOR	FINISH COLOR	
1								
LEGAL OWNER								
Sony Corporation								
RESPONSIBLE DEPARTMENT				ORIGINAL MODEL		DESCRIPTION		
SHES TV Div.				77(A80J)		77(A80J) EXTERIOR VIEW		
PLANNED BY				TENTATIVE MODEL		DESCRIPTION		
2020.10.22				77(A80J)		77(A80J) EXTERIOR VIEW		
DRAWN BY				SCALE		PART NO.		
2020.10.22				1:10		77(A80J) EXTERIOR VIEW		
DRAWN BY				SIZE		SUFFIX		
2020.10.22				A1		REV. NO.		
				UNIT		SHEET/PAGES		
				mm		1/4		

WITH STAND
SOUND BAR POSITION

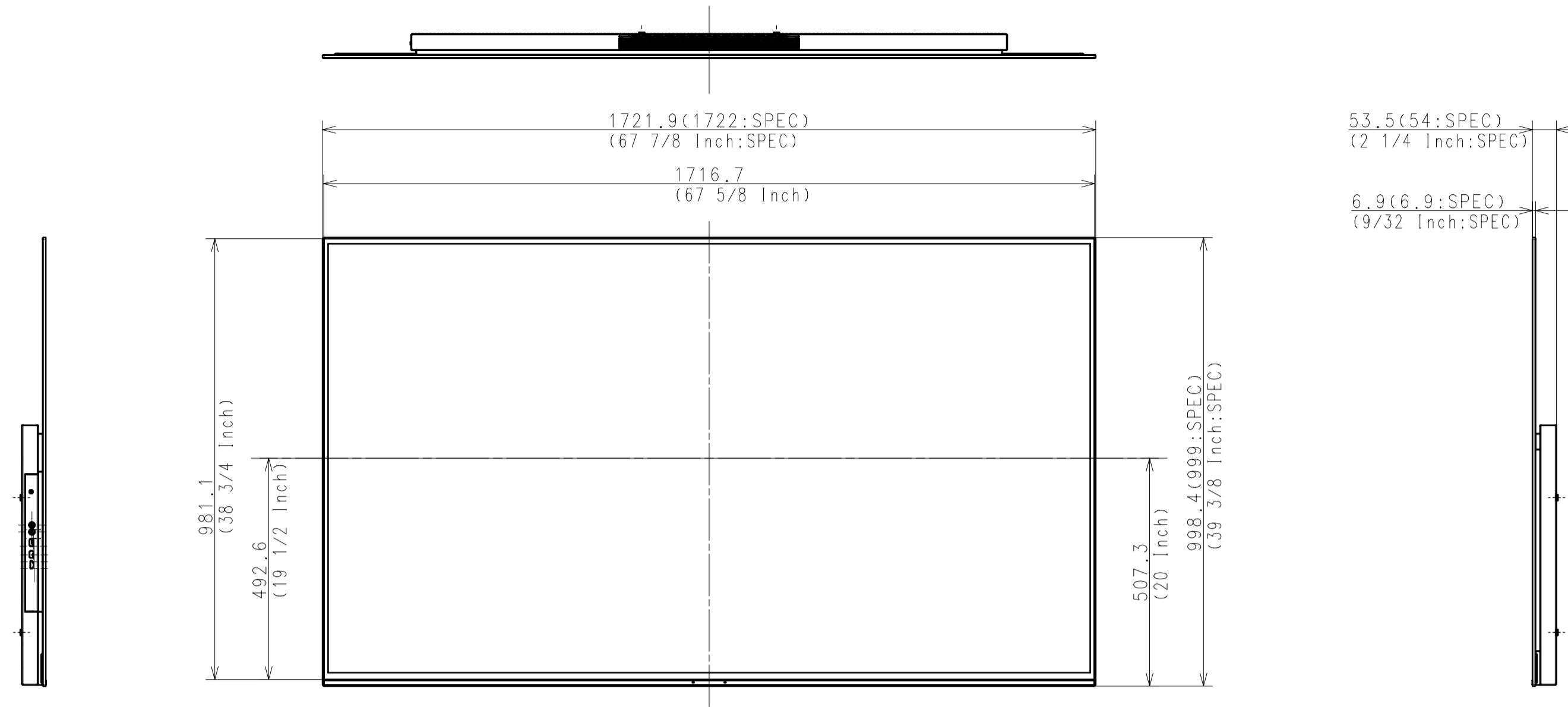


WITH STAND
NARROW POSITION

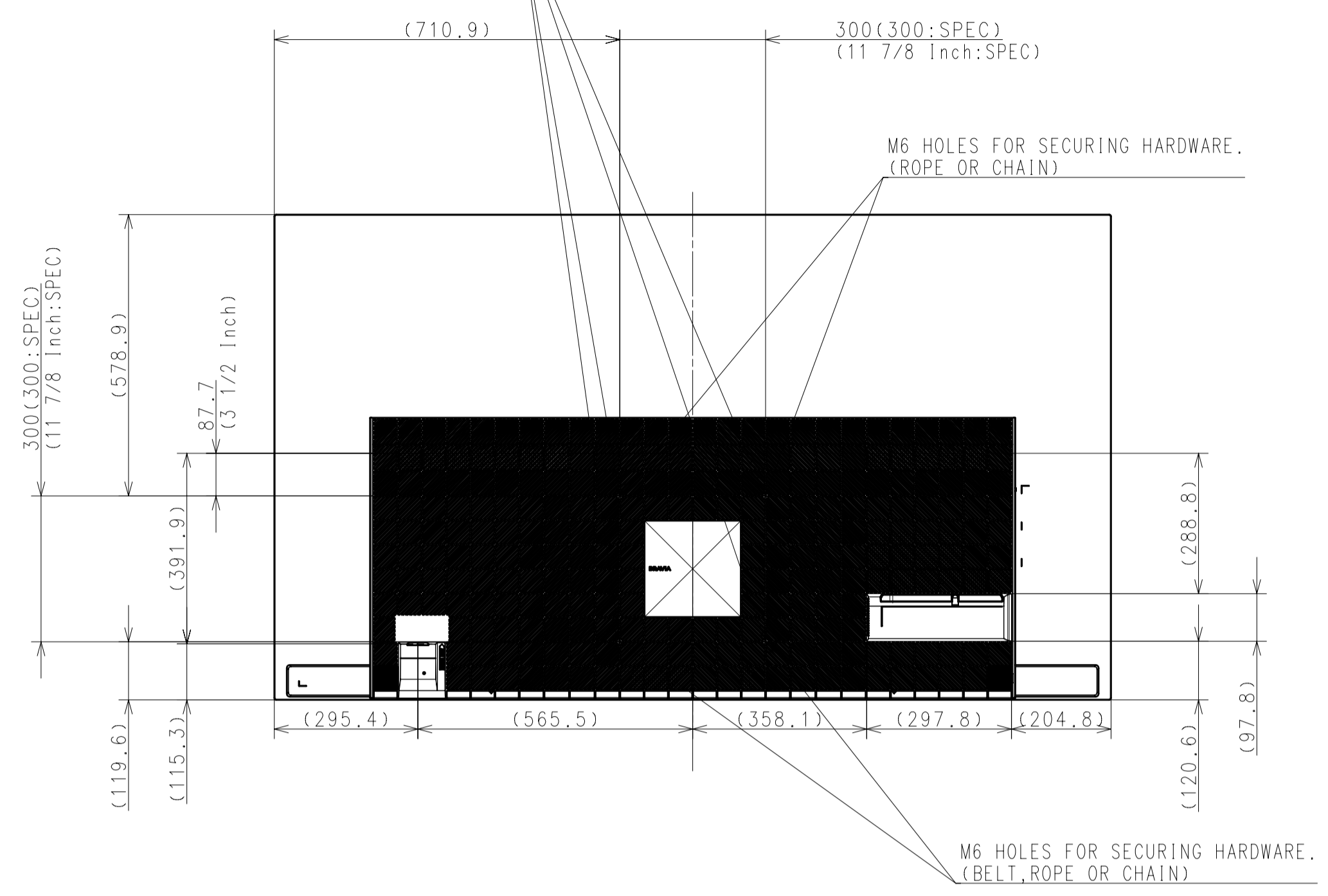


DESCRIPTION 1	LEGAL OWNER	SCALE
77(A80J) EXTERIOR VIEW	Sony Corporation	1:10
DESCRIPTION 2	PART NO.	SHEET/PAGES
77(A80J) EXTERIOR VIEW		2 / 4

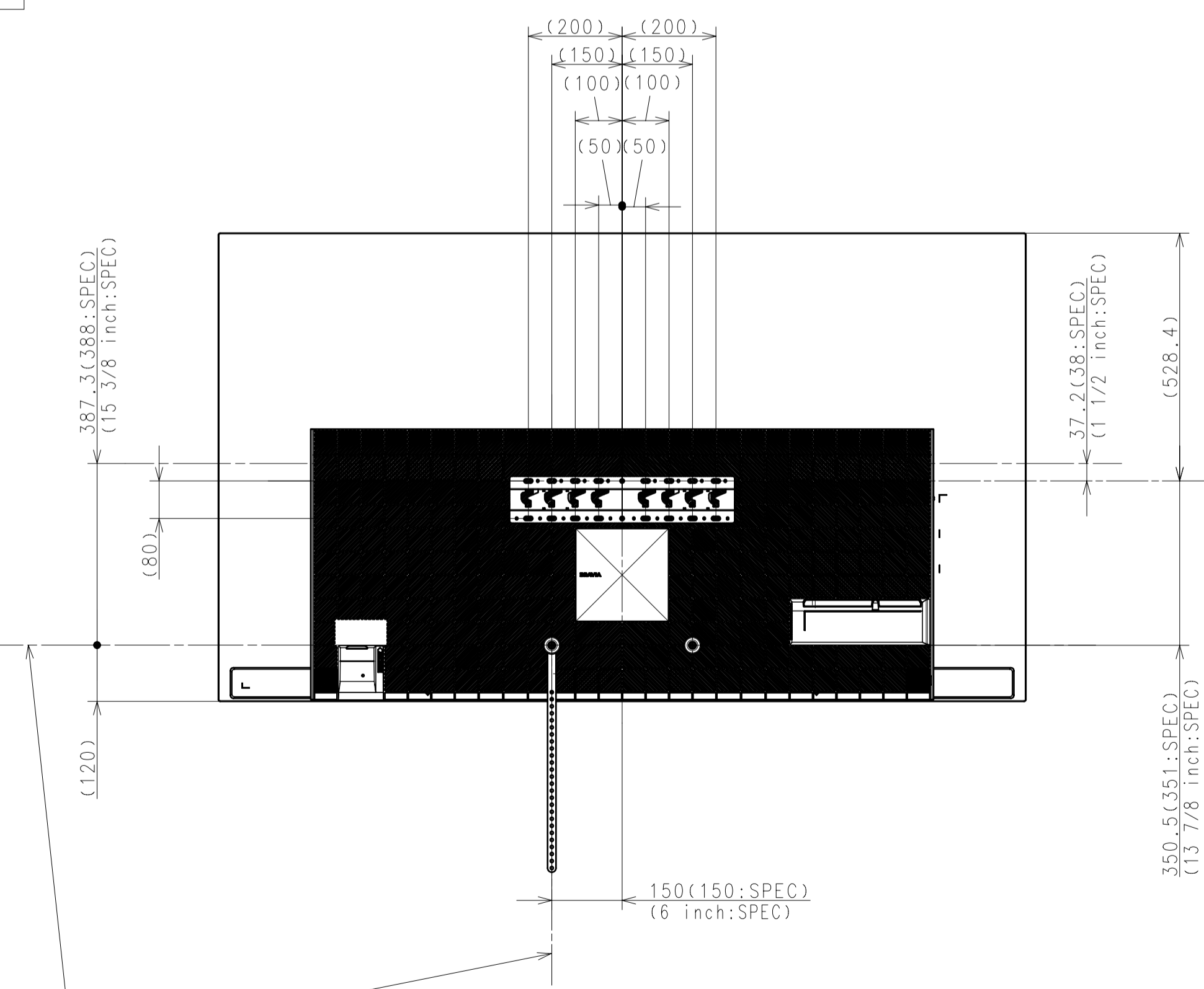
WITHOUT STAND



M6 HOLES FOR WALL MOUNT BRACKET
*REFER TO INSTRUCTION MANUAL FOR SCREW LENGTH INFORMATION

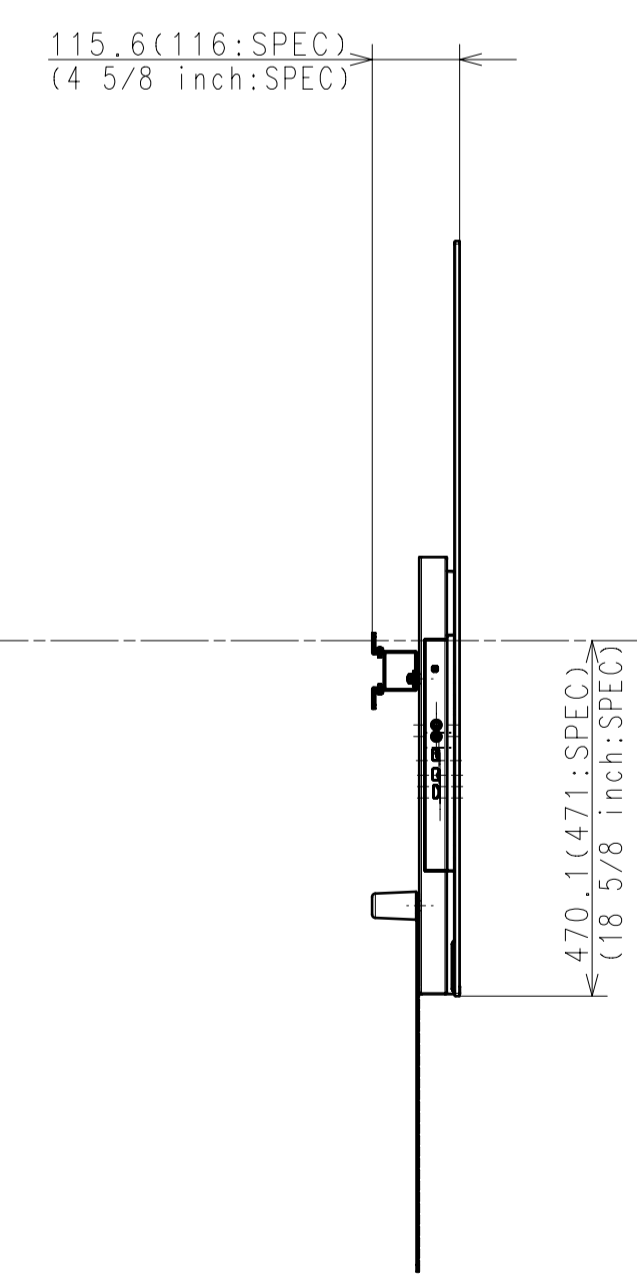


SU-WL450

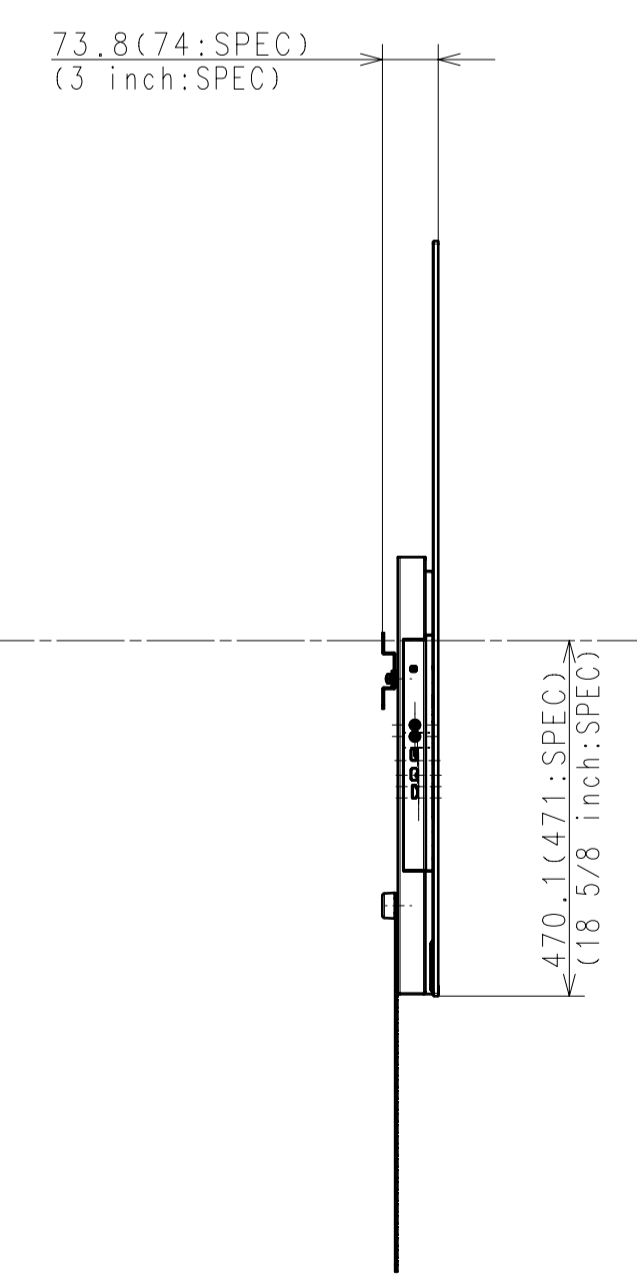


SU-WL450 MASKING TAPE ALIGNMENT LINE

STANDARD MOUNT



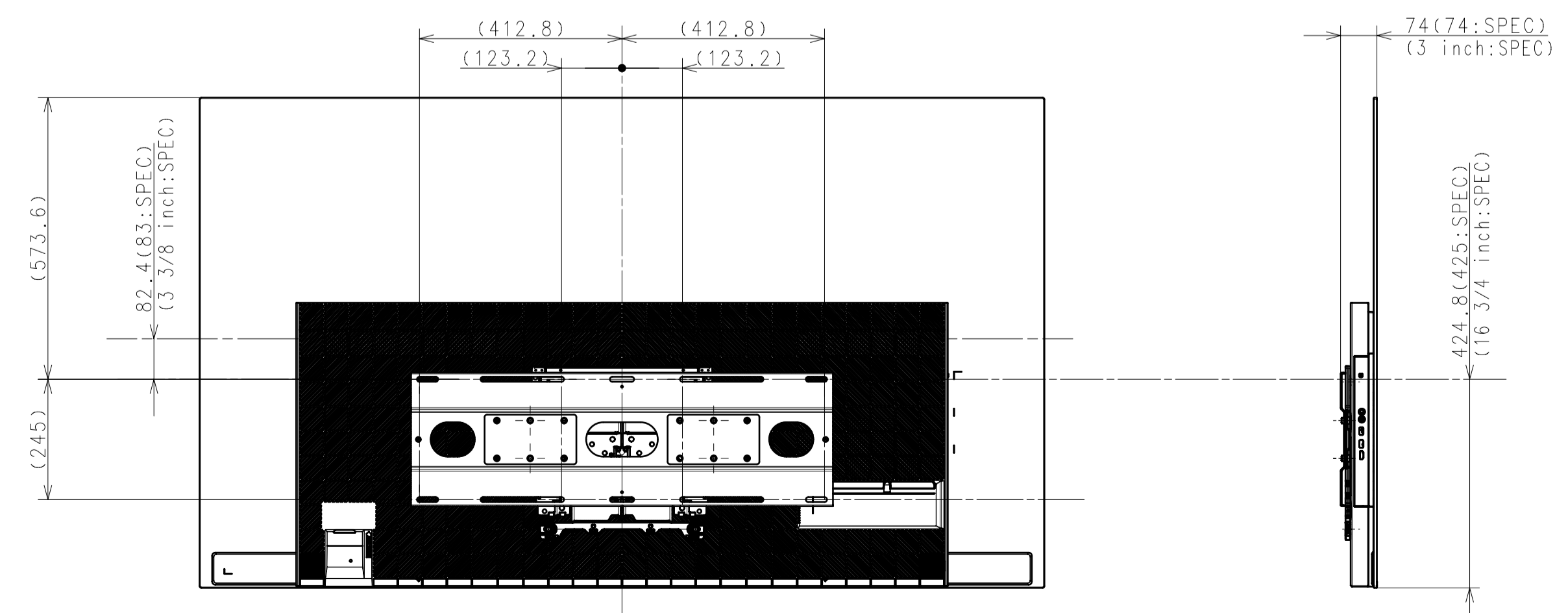
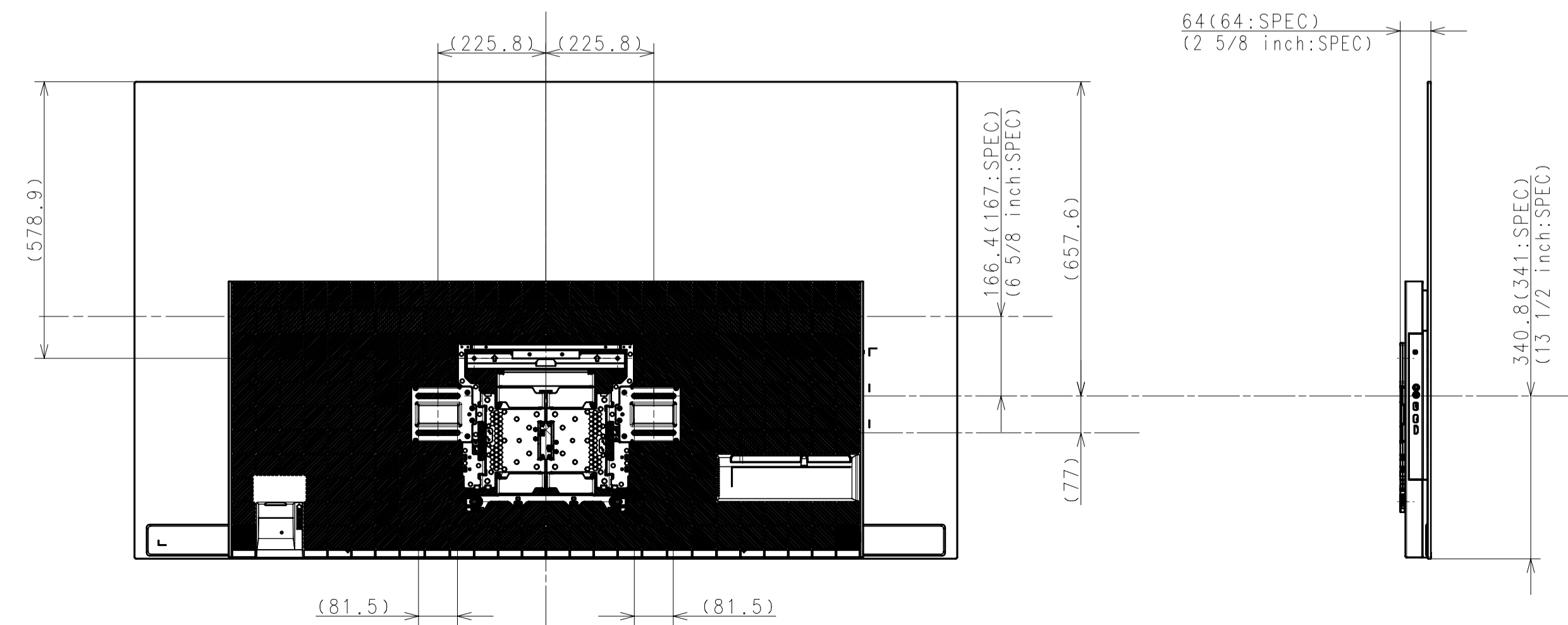
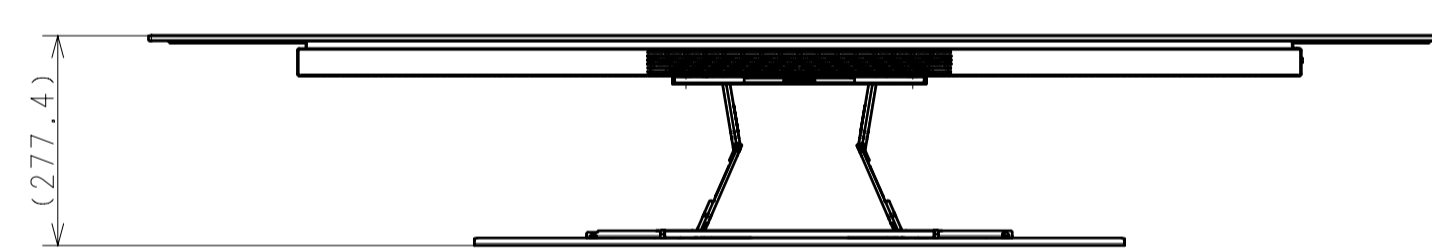
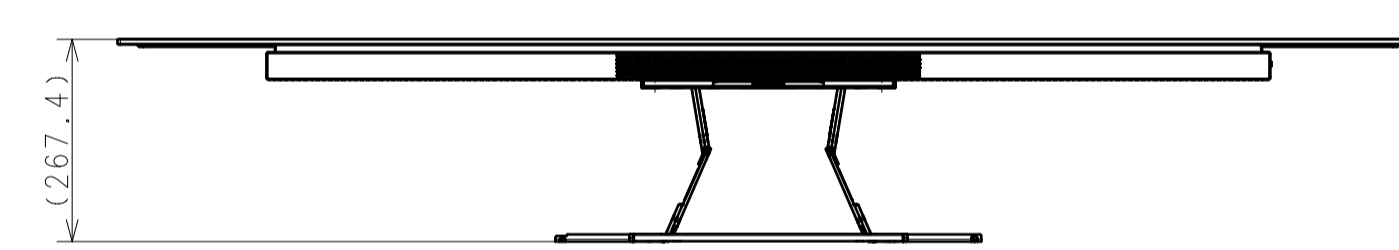
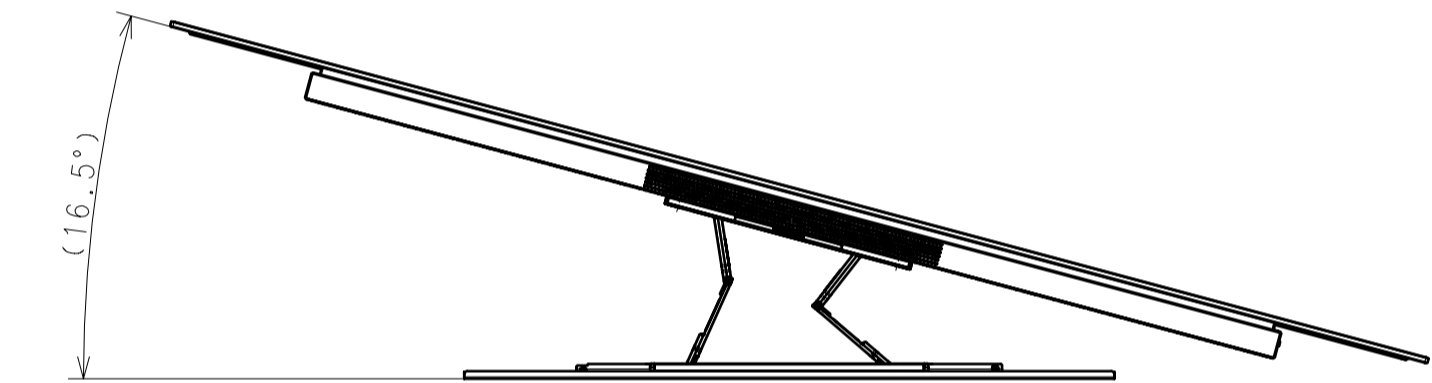
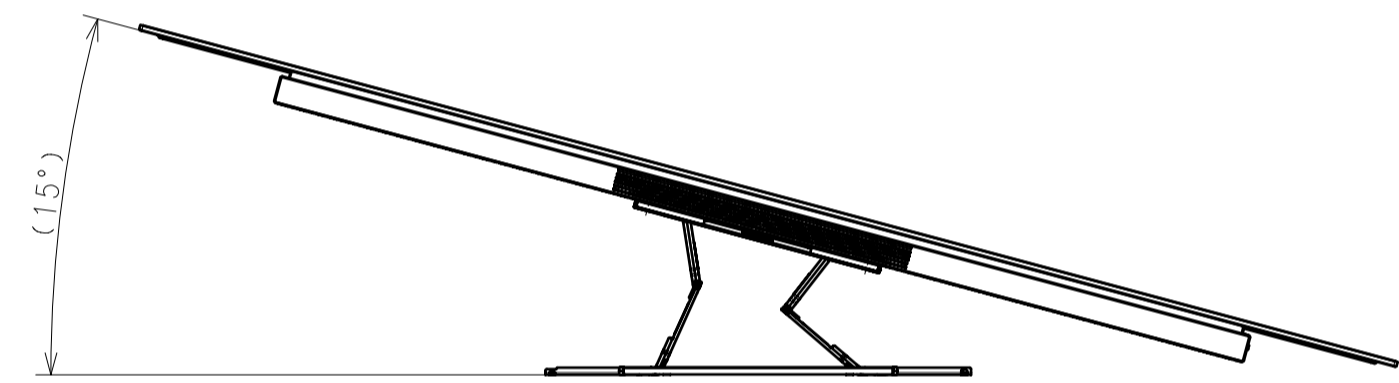
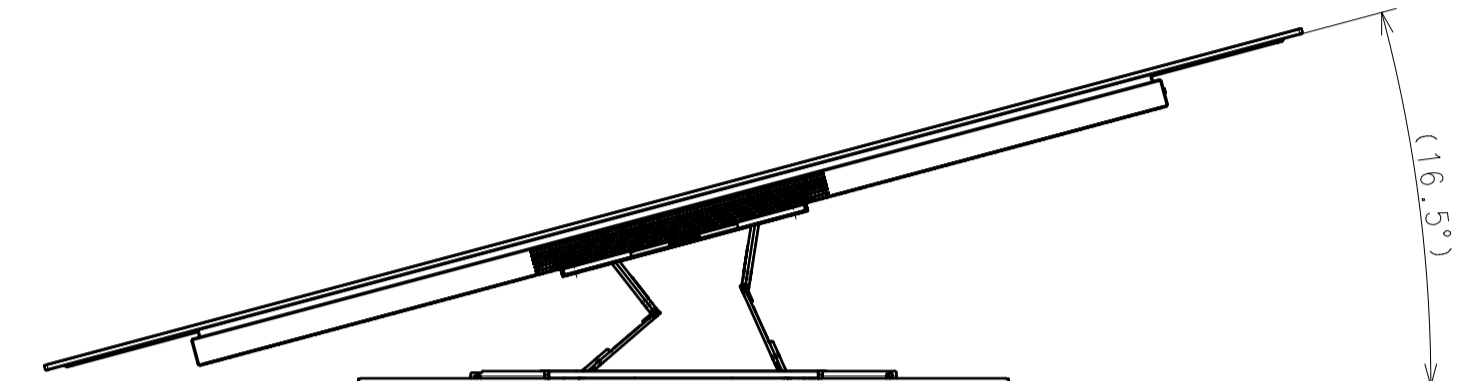
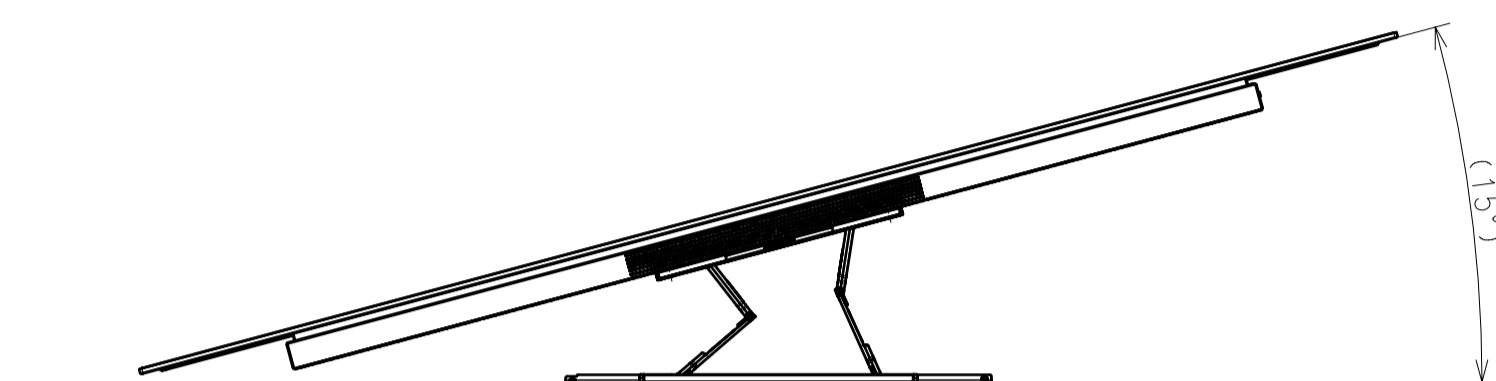
SLIM MOUNT



DESCRIPTION 1	77(A80J) EXTERIOR VIEW	LEGAL OWNER	Sony Corporation	SCALE	1:10
DESCRIPTION 2	77(A80J) EXTERIOR VIEW	PART NO.		SHEET/PAGES	3 / 4

SU-WL850

SU-WL855



DESCRIPTION 1	77(A80J) EXTERIOR VIEW	LEGAL OWNER	Sony Corporation	SCALE	1:10
DESCRIPTION 2	77(A80J) EXTERIOR VIEW	PART NO.		SHEET/PAGES	4 / 4