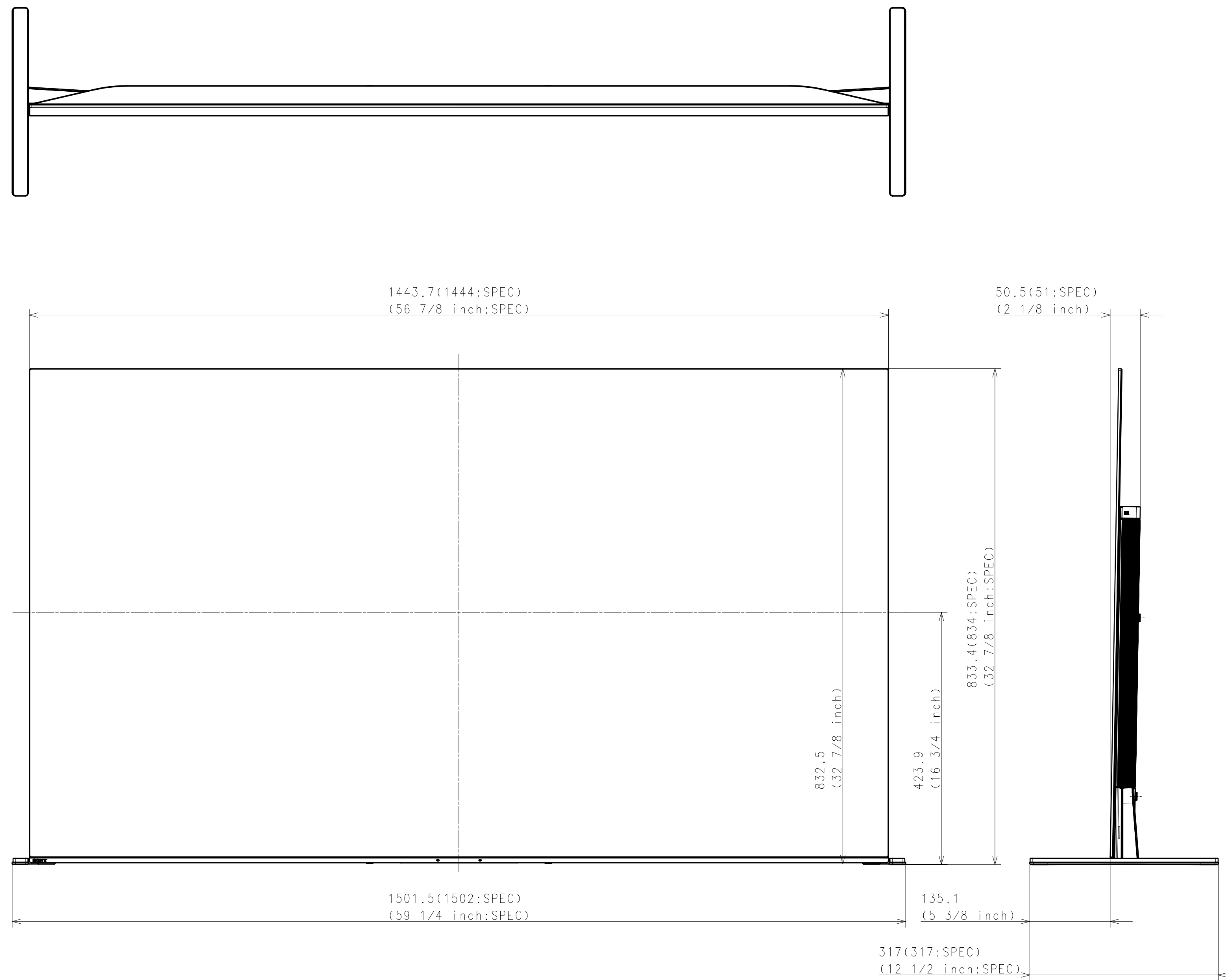
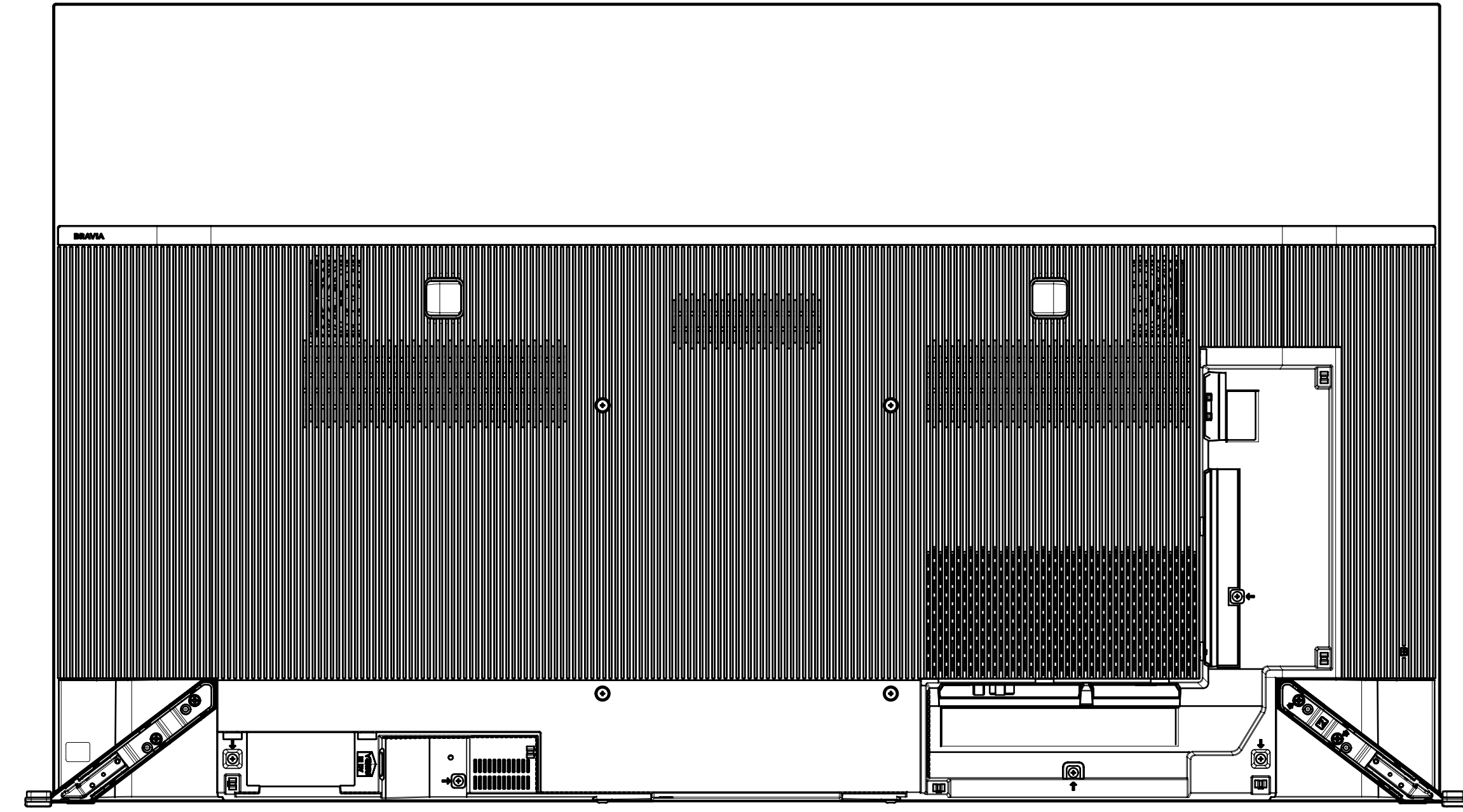


Area	JAPAN	NORTH AMERICA	EUROPE	GENERAL AREA	CHINA	
Model Name	XRJ-65A90J	XR-65A90J	XR-65A90J	XR-65A90J	XR-65A90J	
SV No.	SV-39153	SV-39014	SV-39143	SV-39056	SV-39099	
DIMENSION	TV only (W x H x D)	144.4 x 83.3 x 4.1(0.56) cm	1444 x 833 x 41(5.6) mm / 56 7/8 x 32 7/8 x 1 5/8(1/4) inch	Approx. 144.4 x 83.3 x 4.1(0.56) cm	Approx. 1444 x 833 x 41(5.6) mm	Approx. 1444 x 833 x 41(5.6) mm
	TV with Stand (Standard position) (W x H x D)	150.2 x 83.4 x 31.7 cm	1502 x 834 x 317 mm / 59 1/4 x 32 7/8 x 12 1/2 inch	Approx. 150.2 x 83.4 x 31.7 cm	Approx. 1502 x 834 x 317 mm	Approx. 1502 x 834 x 317 mm
	TV with Stand (Narrow position) (W x H x D)	-	-	-	-	-
	TV with Stand (Soundbar position) (W x H x D)	144.4 x 90.2 x 31.7 cm	1444 x 902 x 317 mm / 56 7/8 x 35 5/8 x 12 1/2 inch	Approx. 144.4 x 90.2 x 31.7 cm	Approx. 1444 x 902 x 317 mm	Approx. 1444 x 902 x 317 mm
	TV with Floor Stand (W x H x D)	-	-	-	-	-
	Stand Width (Standard position)	150.2 cm	1502 mm / 59 1/4 inch	Approx. 150.2 cm	Approx. 1502 mm	Approx. 1502 mm
	Stand Width (Narrow position)	-	-	-	-	-
	Stand Width (Soundbar position)	136.5 cm	1365 mm / 53 3/4 inch	Approx. 136.5 cm	Approx. 1365 mm	Approx. 1365 mm
WEIGHT	Floor Stand Width	-	-	-	-	-
	VESA Hole Pitch	30.0 x 30.0 cm	300 x 300 mm / 11 7/8 x 11 7/8 inch	30.0 x 30.0 cm	300 x 300 mm	300 x 300 mm
	TV Only	22.5 kg	22.5 kg / 49.6 lb	Approx. 22.5 kg	Approx. 22.5 kg	Approx. 22.5 kg
	TV with Stand (Standard position)	24.6 kg	24.6 kg / 54.2 lb	Approx. 24.6 kg	Approx. 24.6 kg	Approx. 24.6 kg
	TV with Stand (Narrow position)	-	-	-	-	-
Remarks	TV with Stand (Soundbar position)	24.6 kg	24.6 kg / 54.2 lb	Approx. 24.6 kg	Approx. 24.6 kg	Approx. 24.6 kg
	TV with Floor Stand	-	-	-	-	-
	Floor Stand weight (Supply)	-	-	-	-	-
W-M't Br. Weight (Supply)	-	-	-	-	-	

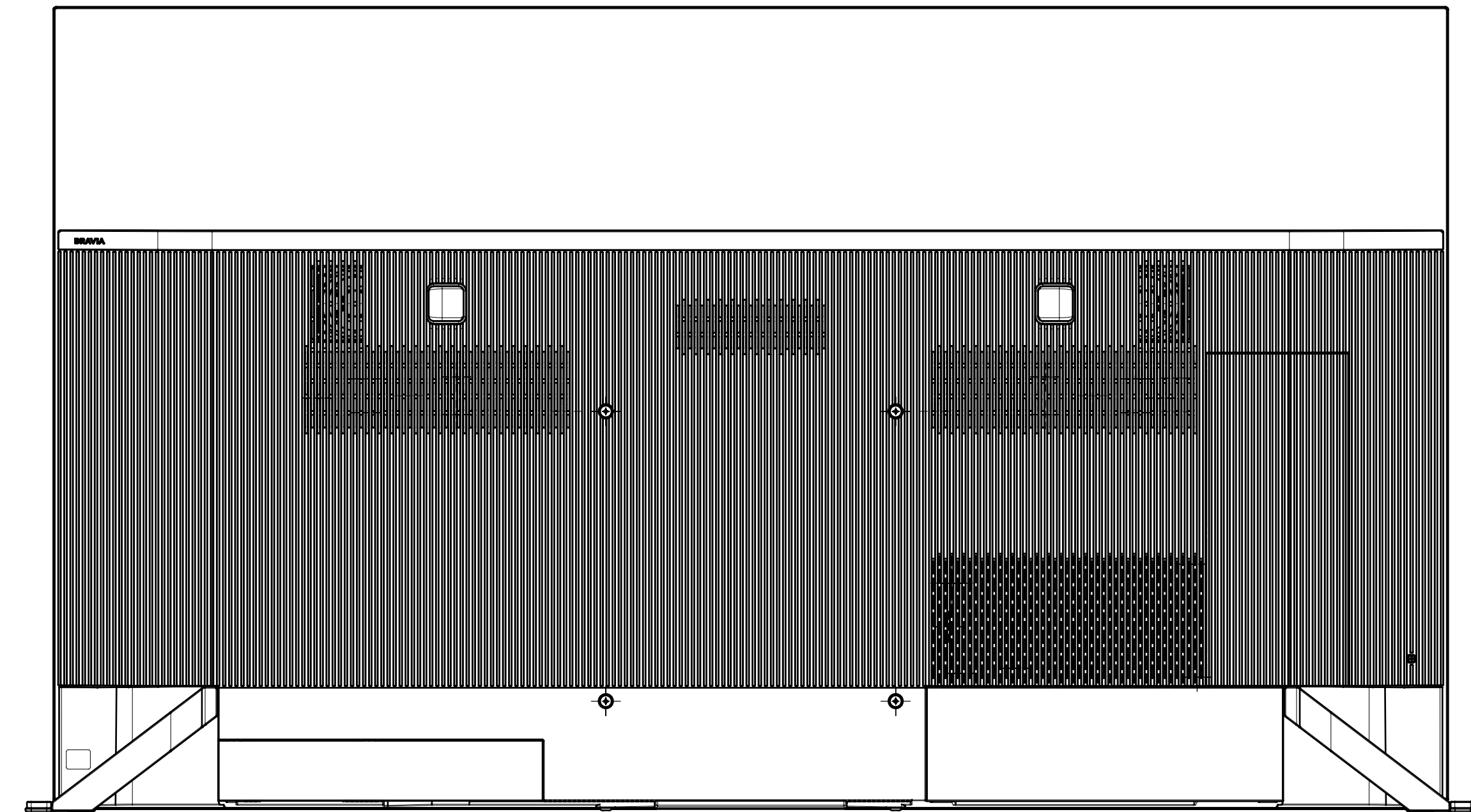
WITH STAND
STANDARD POSITION



WITHOUT COVER



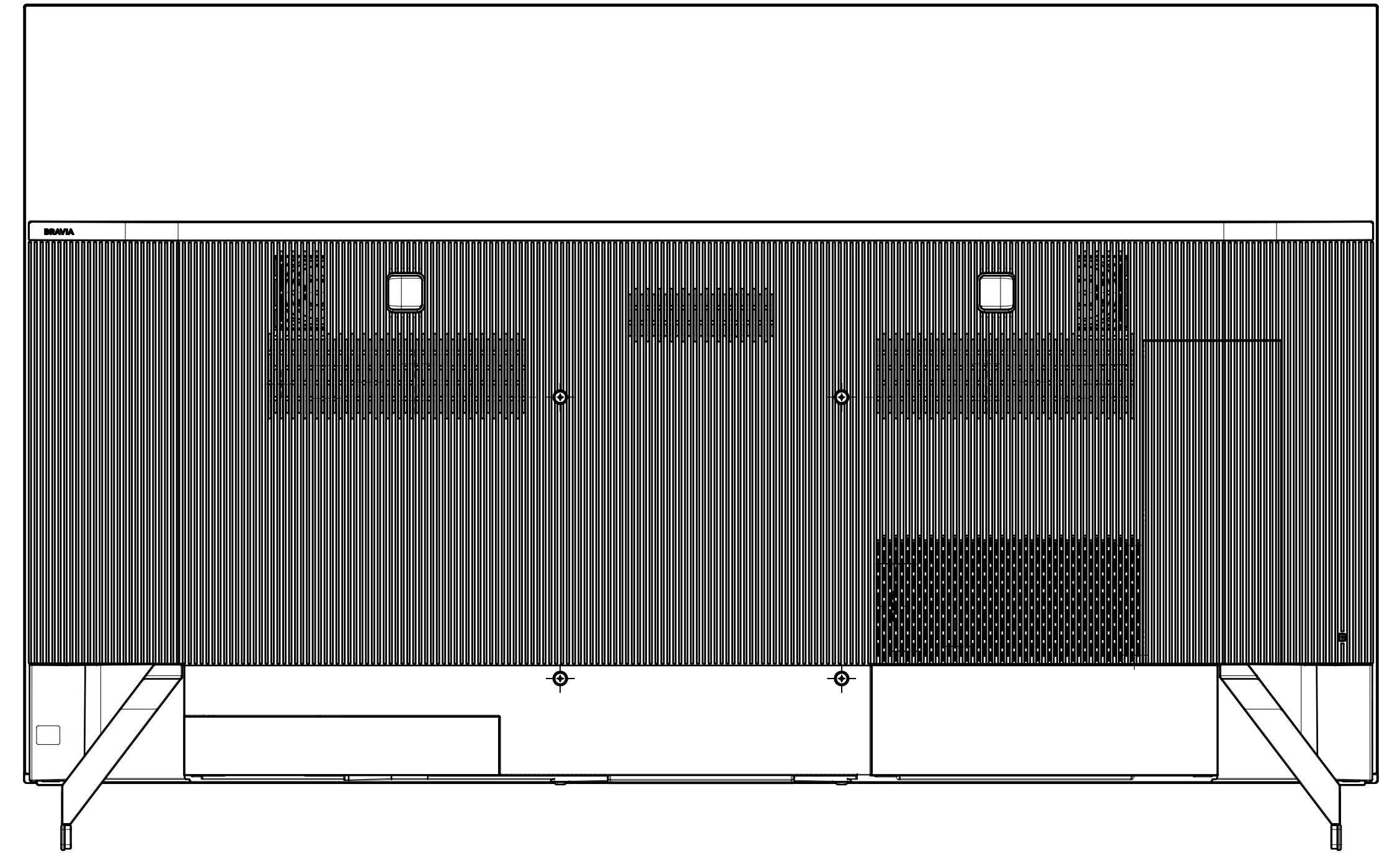
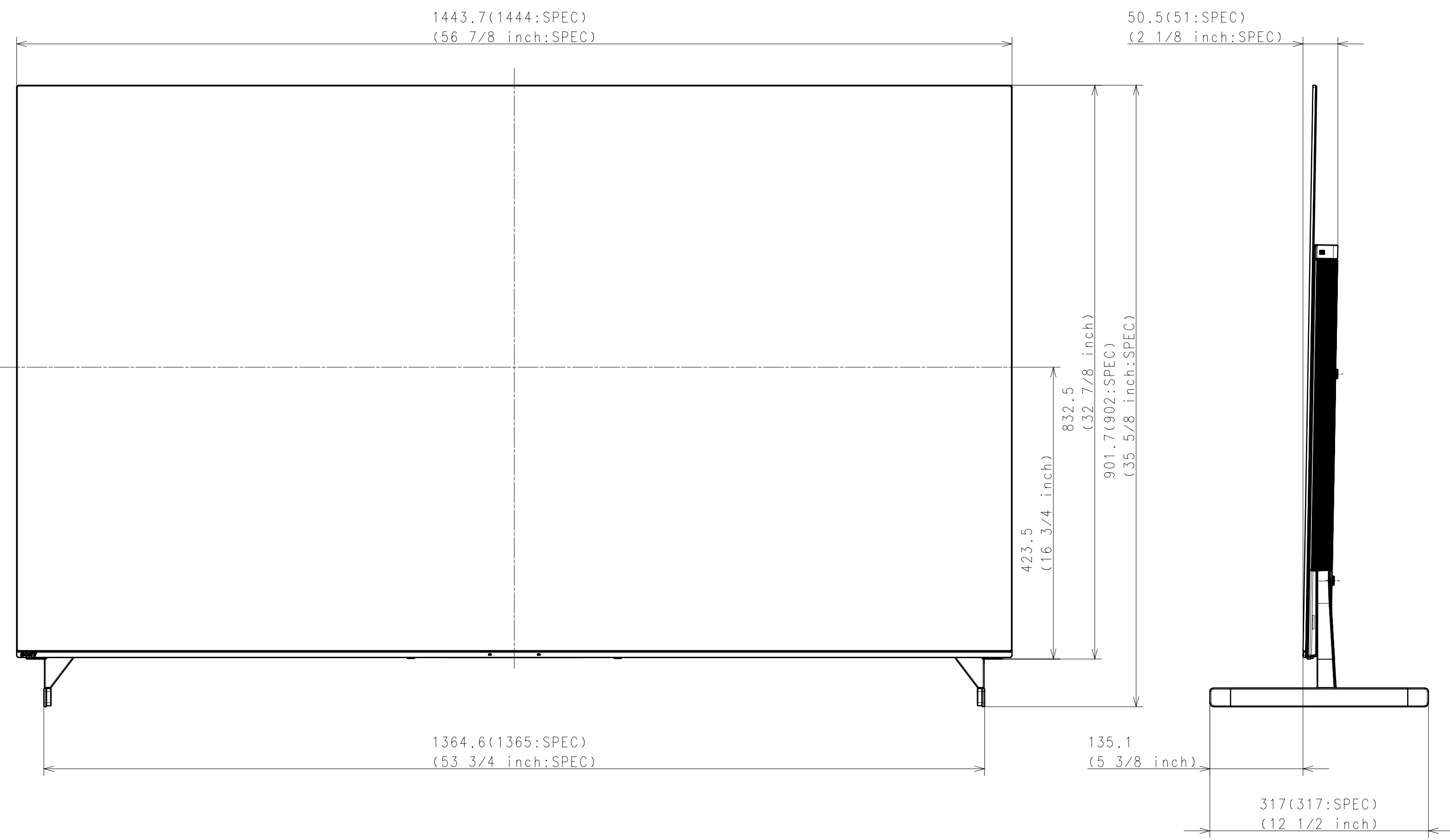
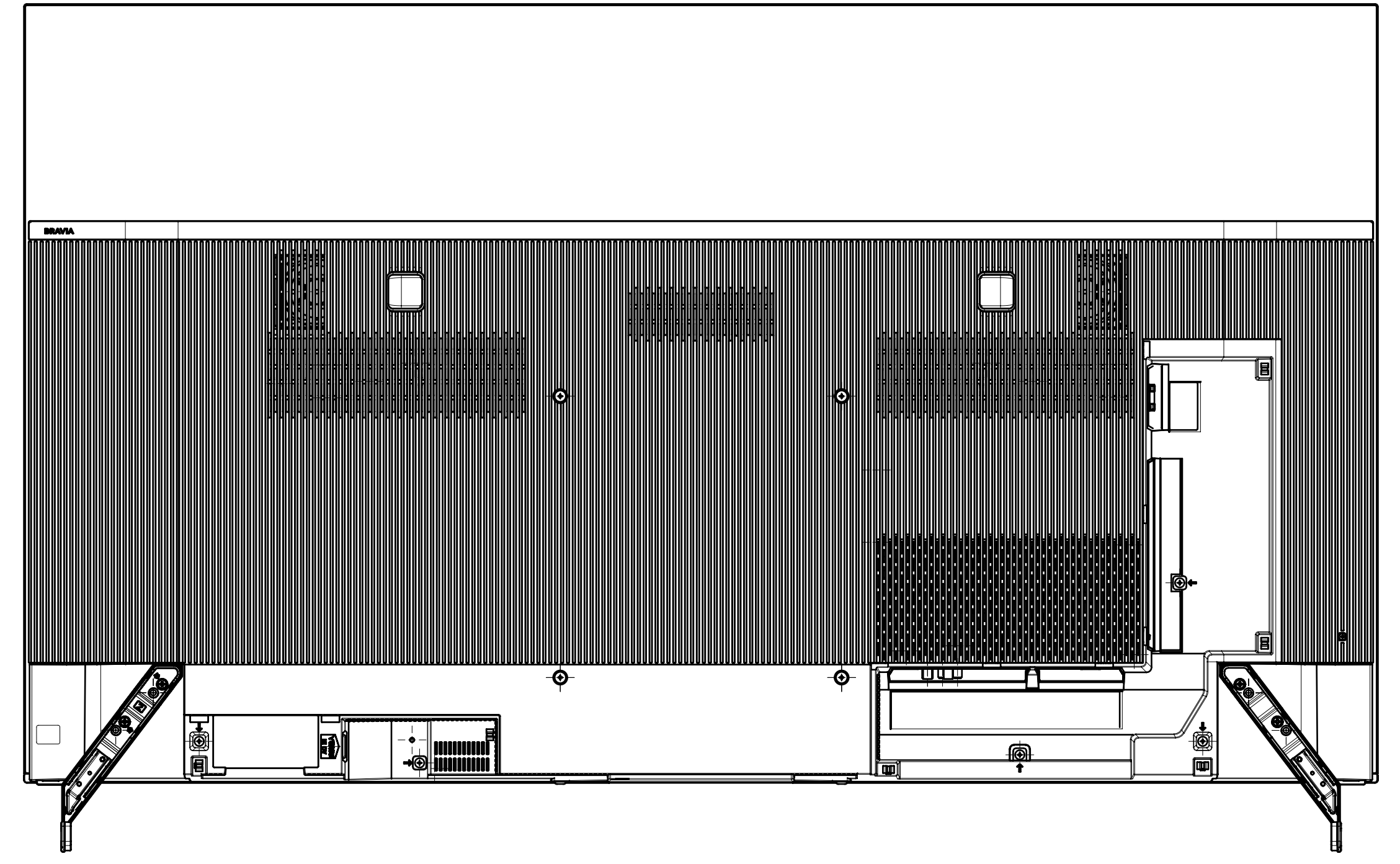
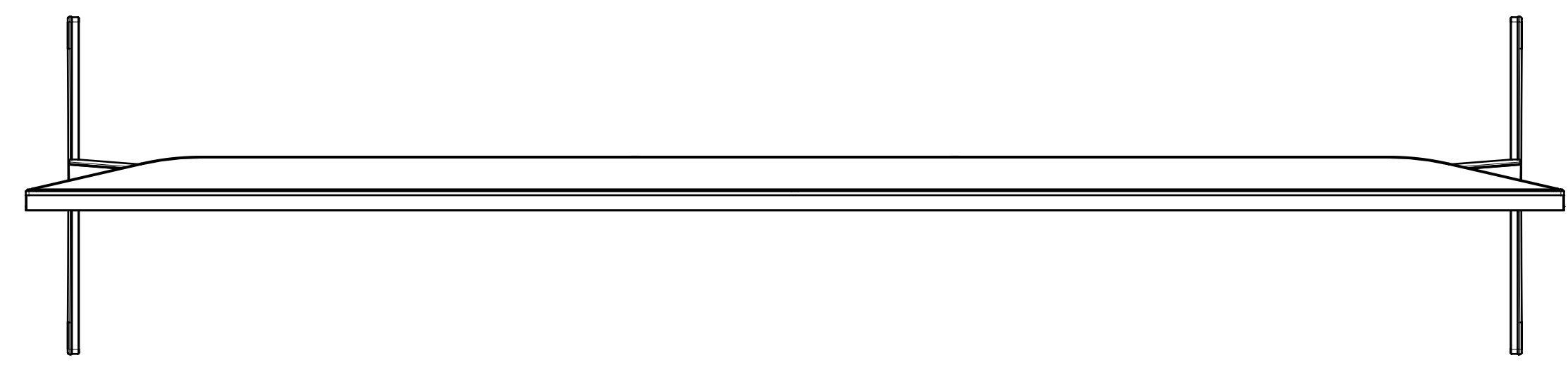
WITH COVER



Purchase recycled resins and wire rods only from the business partners that Sony approves as Green Partners.
再生樹脂・銅線材はグリーンパートナー 認定製品から調達すること。

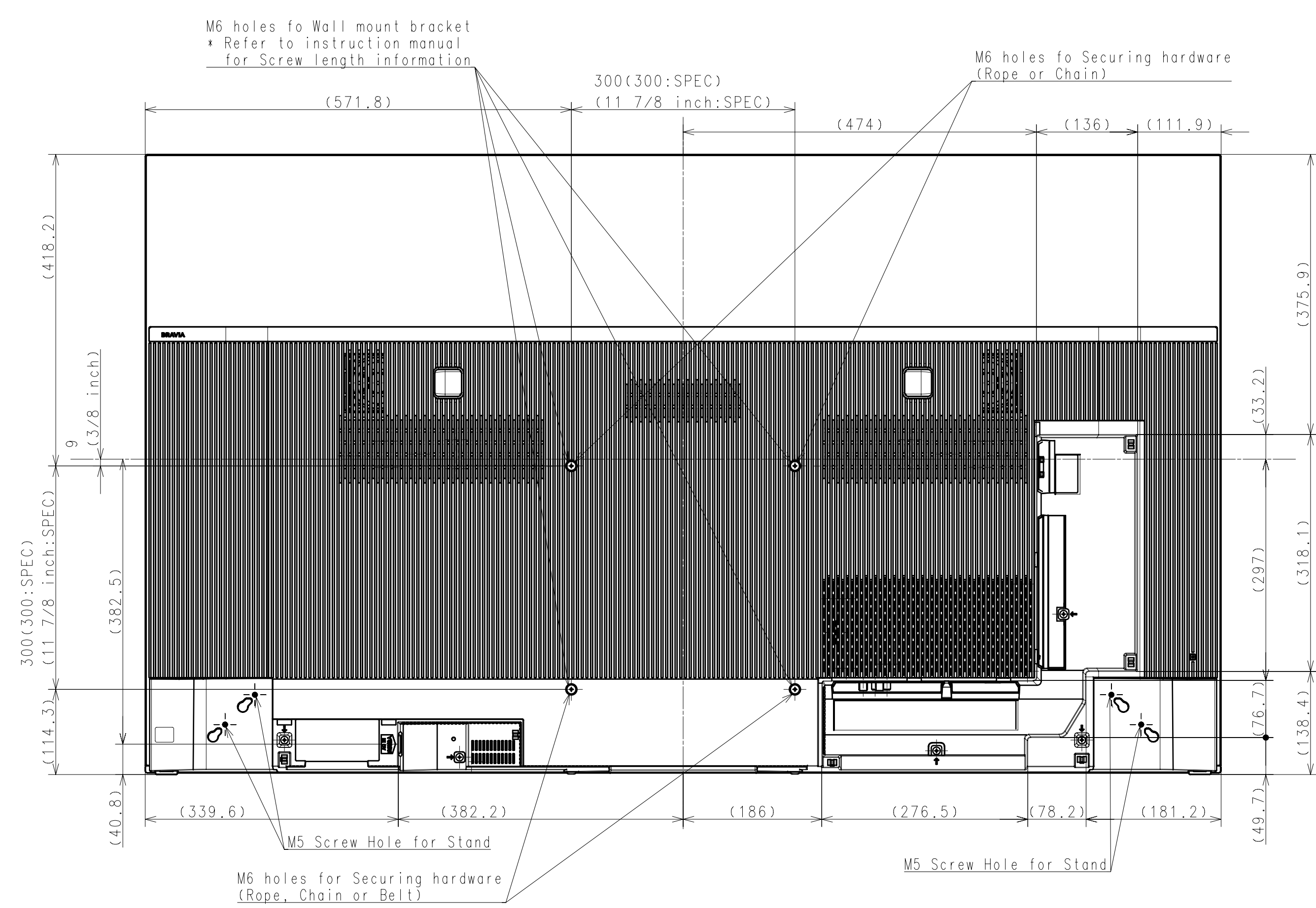
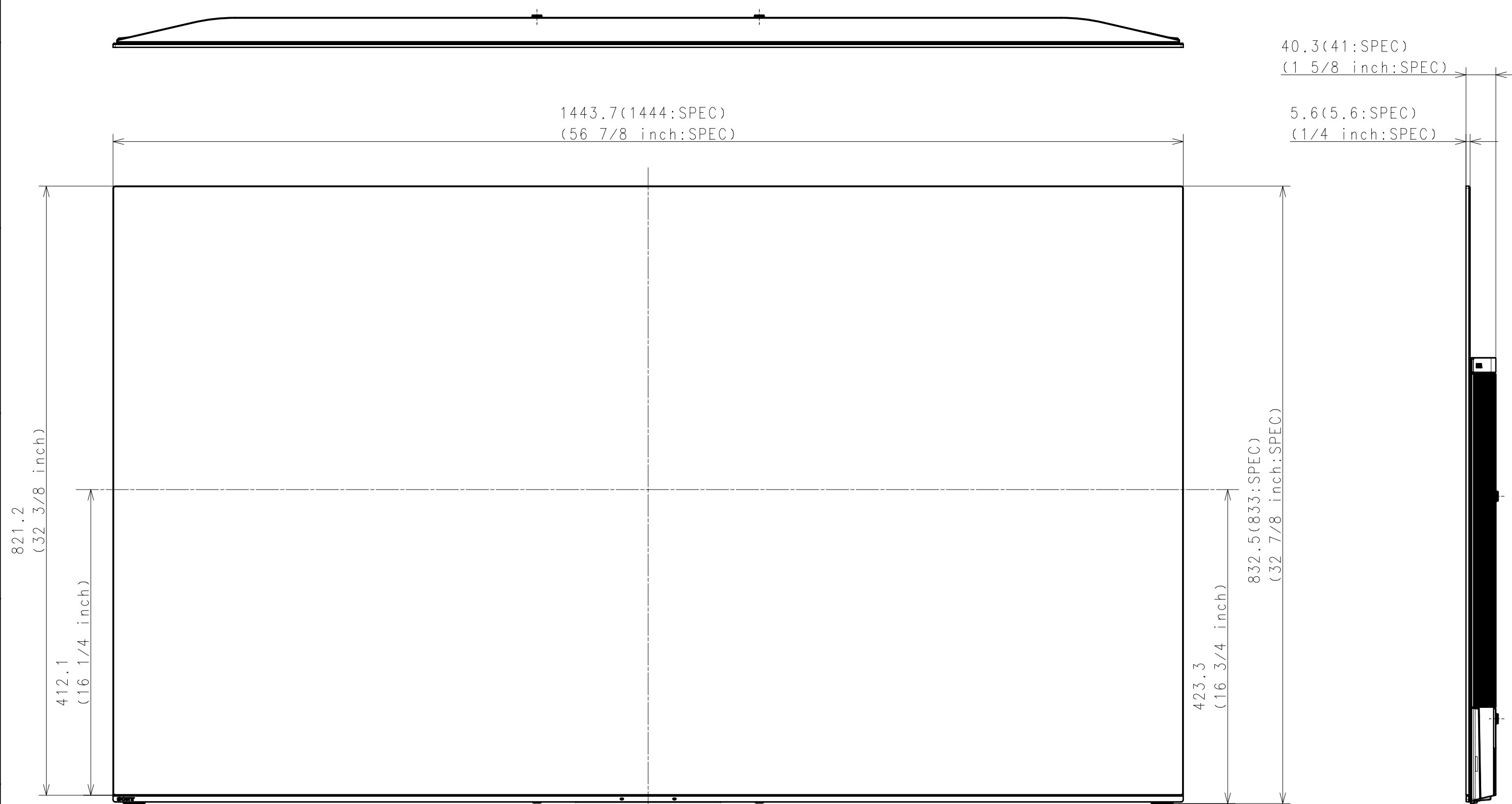
△	⊗	△	⊗	△	⊗	△	⊗	△	⊗	△	⊗	△	⊗	△	⊗	△	⊗	△	⊗
HISTORY										GENERAL TOLERANCE		DATE OF ISSUE							
REVISION										OUTLINE DRAWING		2020.10.16							
SUFFIX										TOLERANCING		JIS & JESD183							
RELEASE NO.										MATERIAL COLOR		FINISH COLOR							
DATE										SIGN.									
REVISION										SIGN.									
LEGAL OWNER										SIGN.									
Sony Corporation										SIGN.									
RESPONSIBLE DEPARTMENT										ORIGINAL MODEL		DESCRIPTION							
SHES/TV BIS/PRODUCT DESIGN/PD3/SEC.2										65 (A90J) EXTERIOR VIEW		65 (A90J) EXTERIOR VIEW							
PLANNED BY										SCALE		DESCRIPTION							
2020.10.16										1:5		65 (A90J) EXTERIOR VIEW							
DRAWN BY										SIZE		SHEET/PAGES							
2020.10.16										A1		1/4							
PRJ. METHOD										UNIT		SHEET/PAGES							
A1										mm		1/4							
PART NO.										SUFFIX		REV. NO.							

WITH STAND
SOUND BAR POSITION

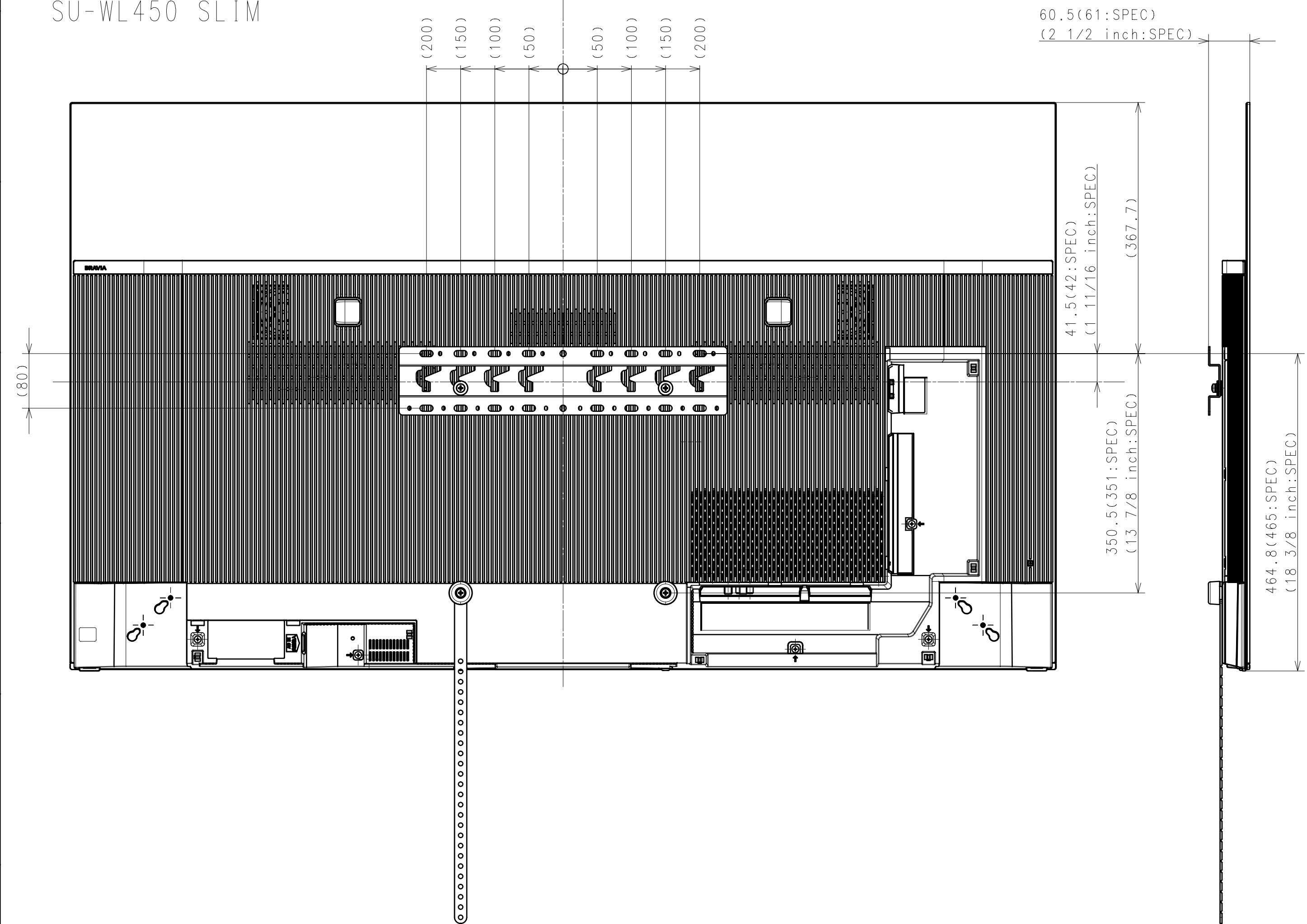


DESCRIPTION 1	LEGAL OWNER	SCALE
65 (A90J) EXTERIOR VIEW	Sony Corporation	1:5
DESCRIPTION 2	PART NO.	SHEET/PAGES
65 (A90J) EXTERIOR VIEW		2 / 4

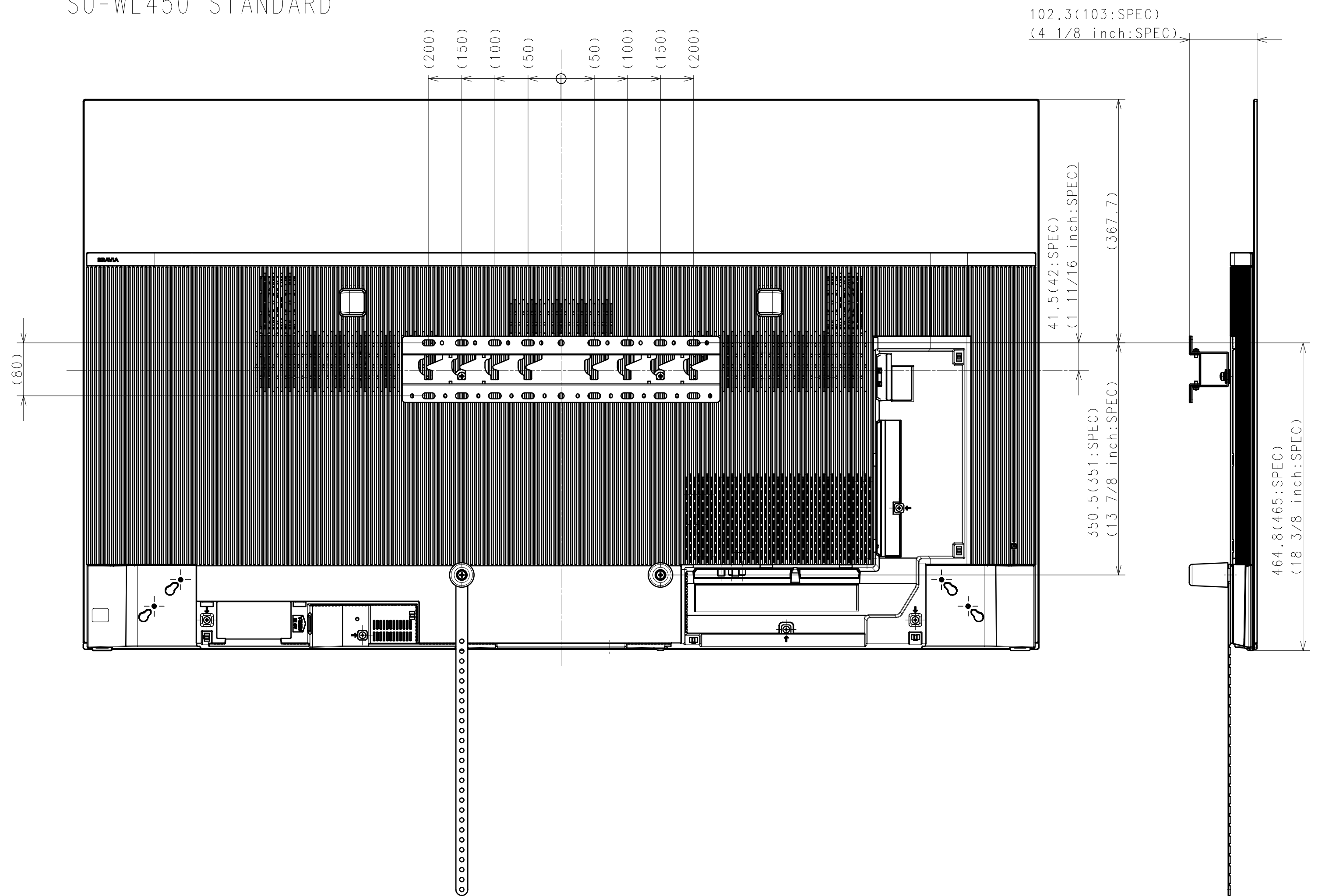
WITHOUT STAND



SU-WL450 SLIM



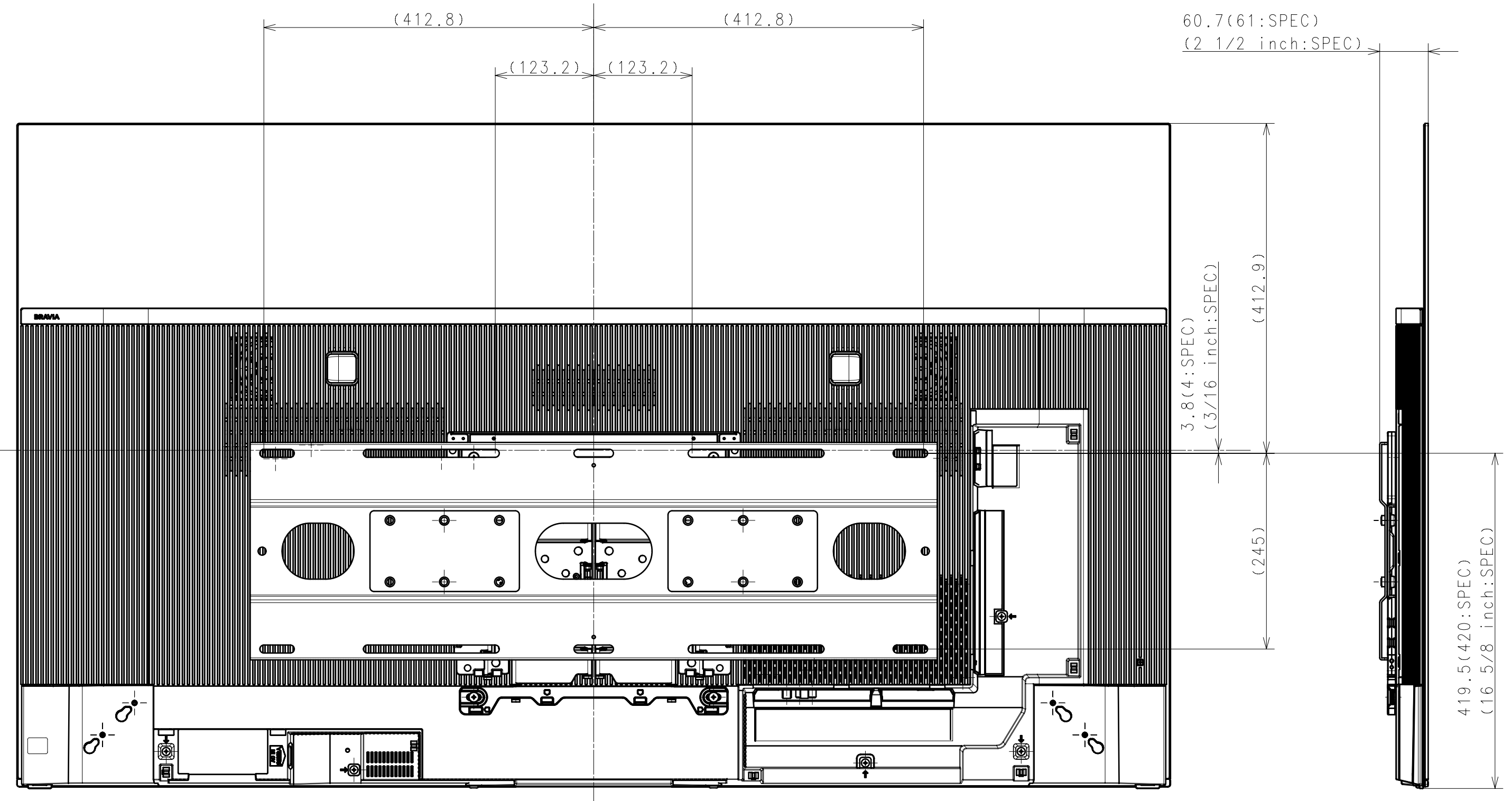
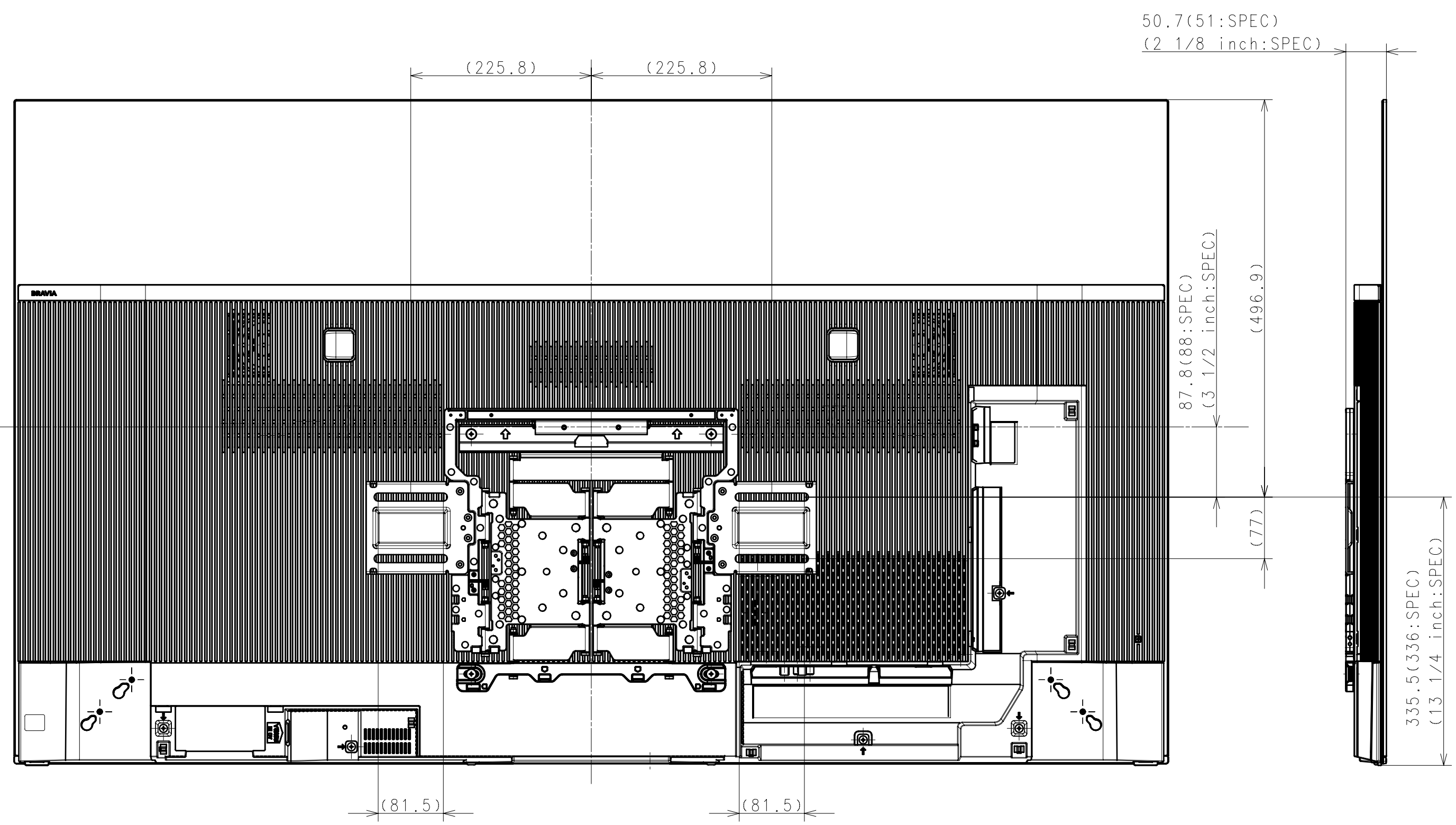
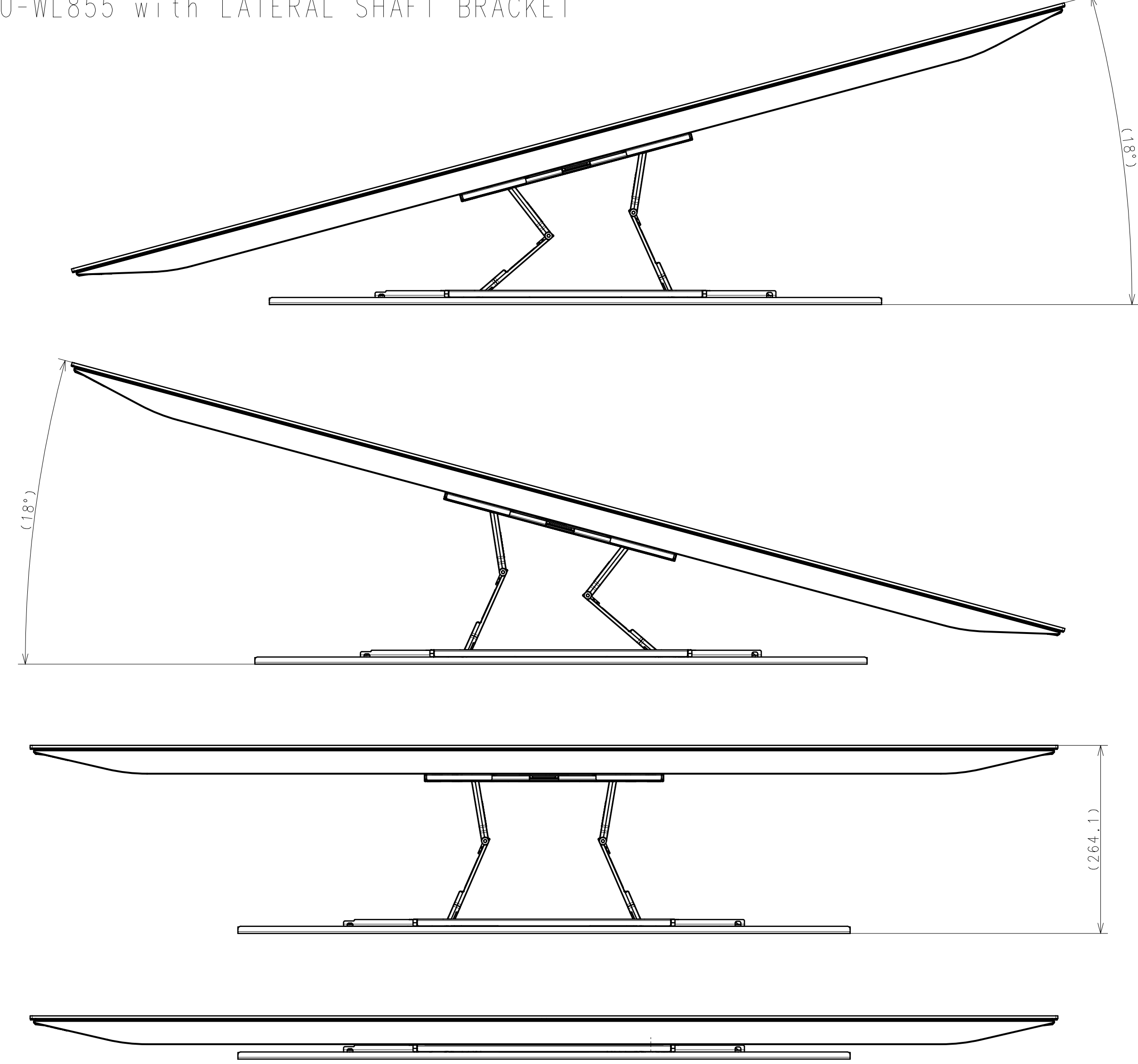
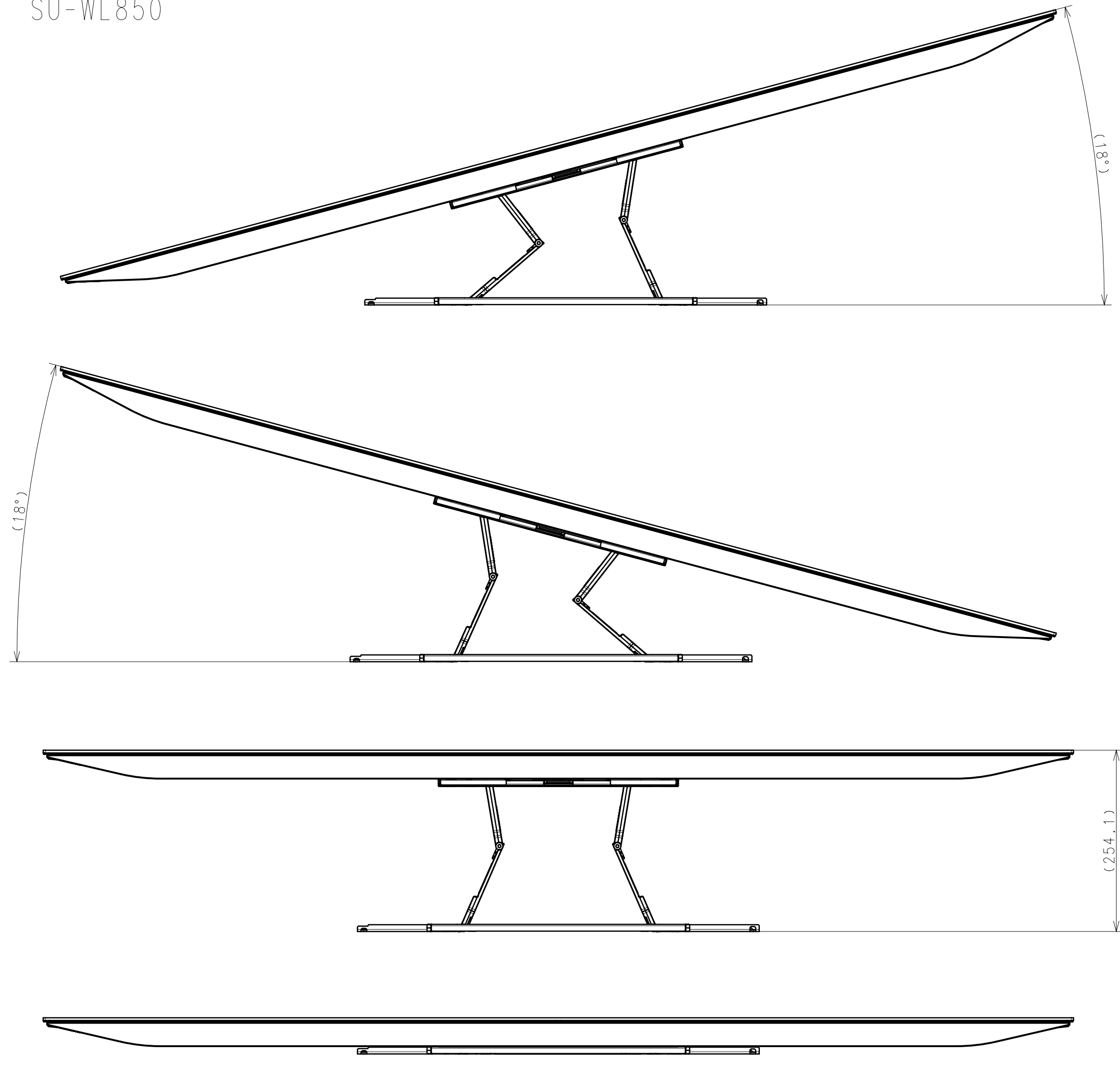
SU-WL450 STANDARD



DESCRIPTION 1 65 (A90J) EXTERIOR VIEW	LEGAL OWNER Sony Corporation	SCALE 1:5
DESCRIPTION 2 65 (A90J) EXTERIOR VIEW	PART NO.	SHEET/PAGES 3 / 4

SU-WL850

SU-WL855 with LATERAL SHAFT BRACKET



DESCRIPTION 1	65 (A90J) EXTERIOR VIEW	LEGAL OWNER	Sony Corporation	SCALE	1:5
DESCRIPTION 2	65 (A90J) EXTERIOR VIEW	PART NO.		SHEET/PAGES	4 / 4