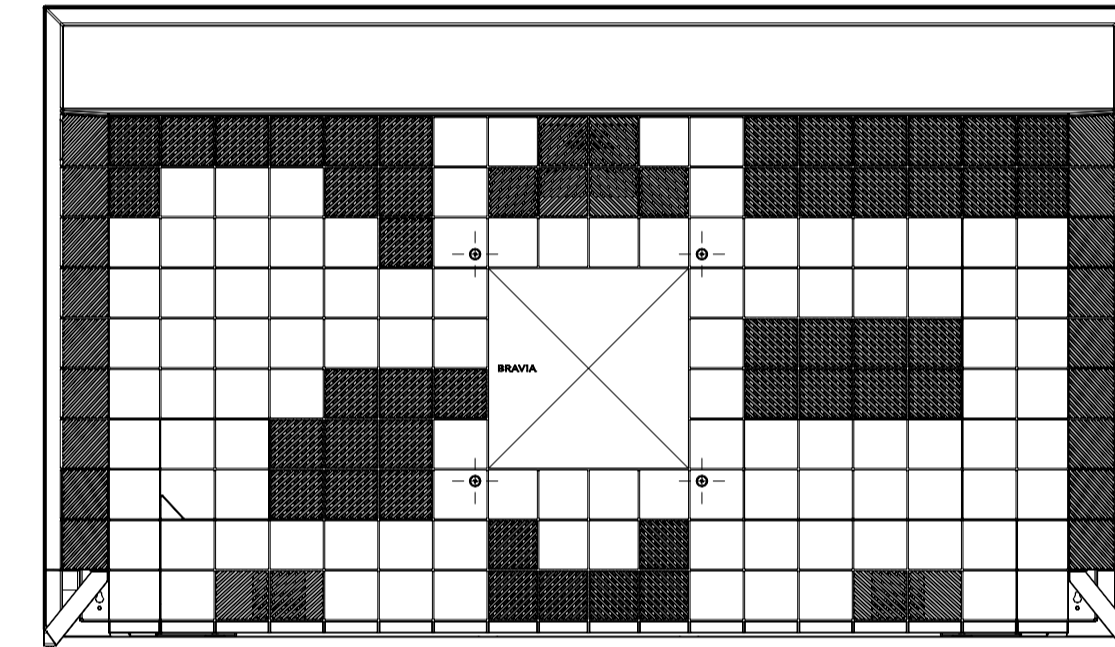
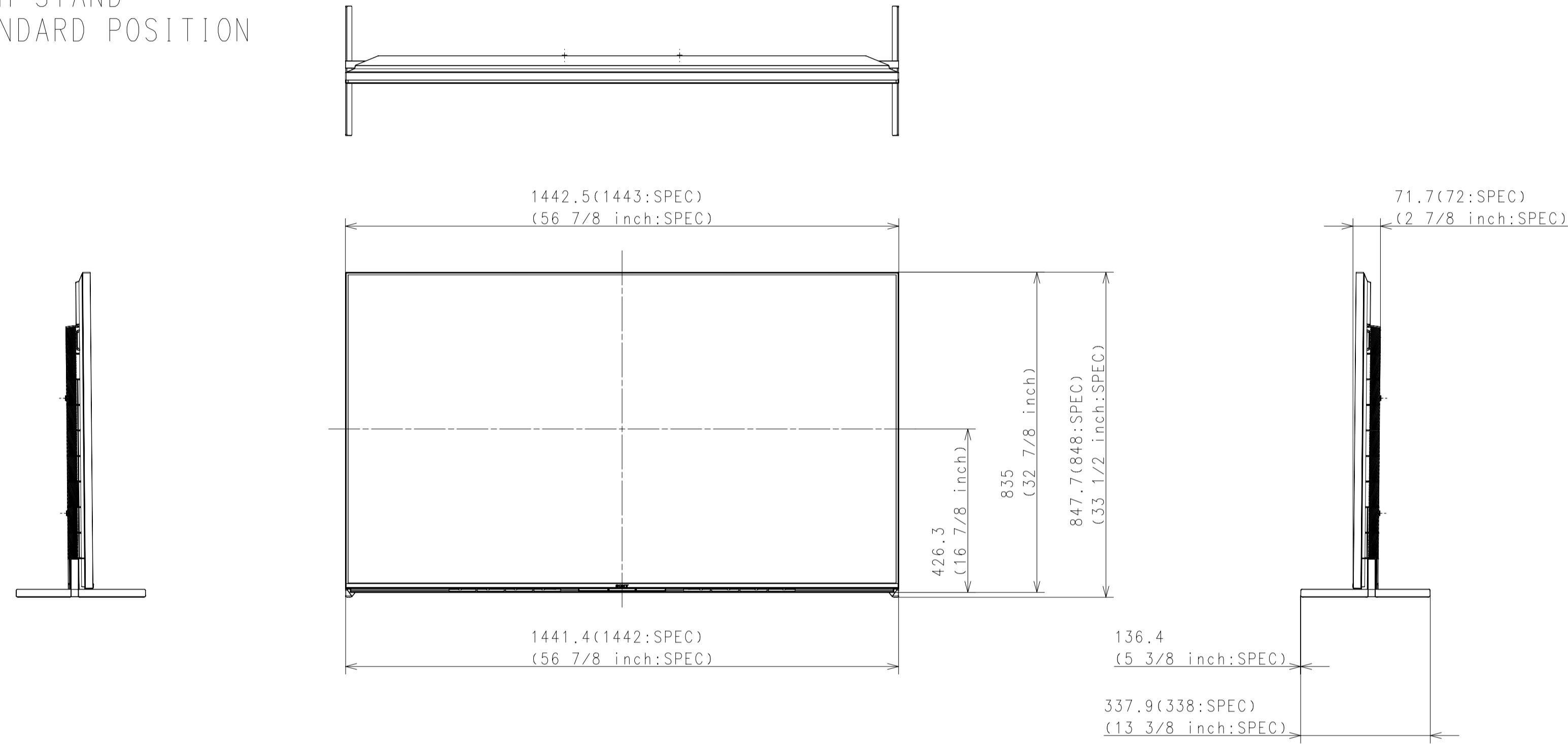
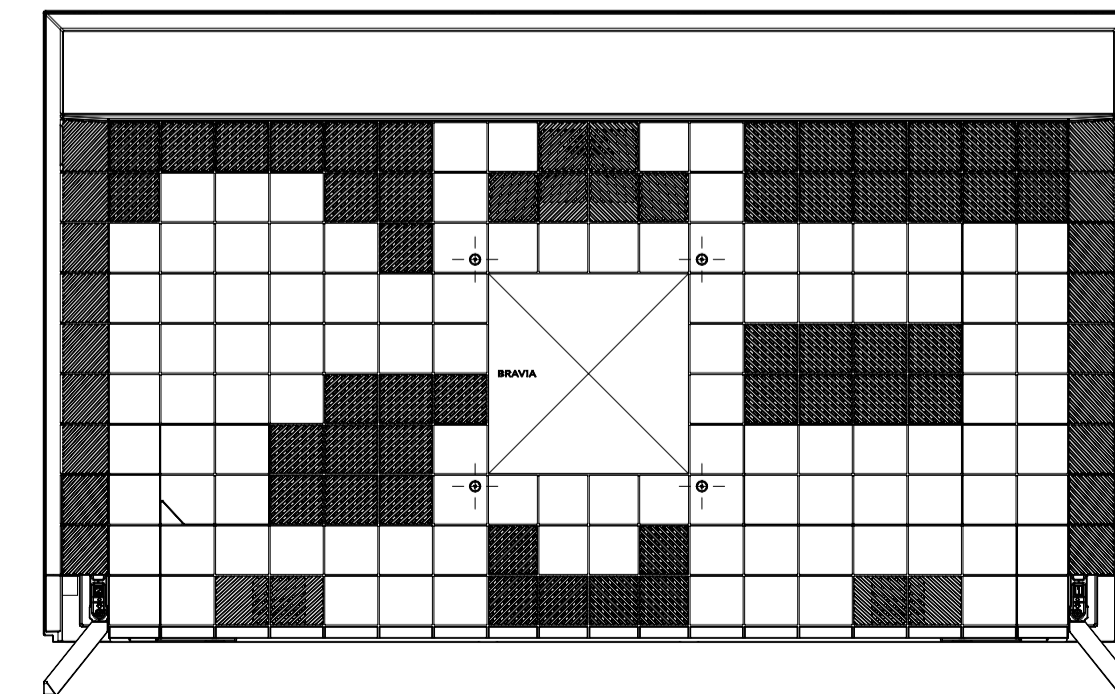
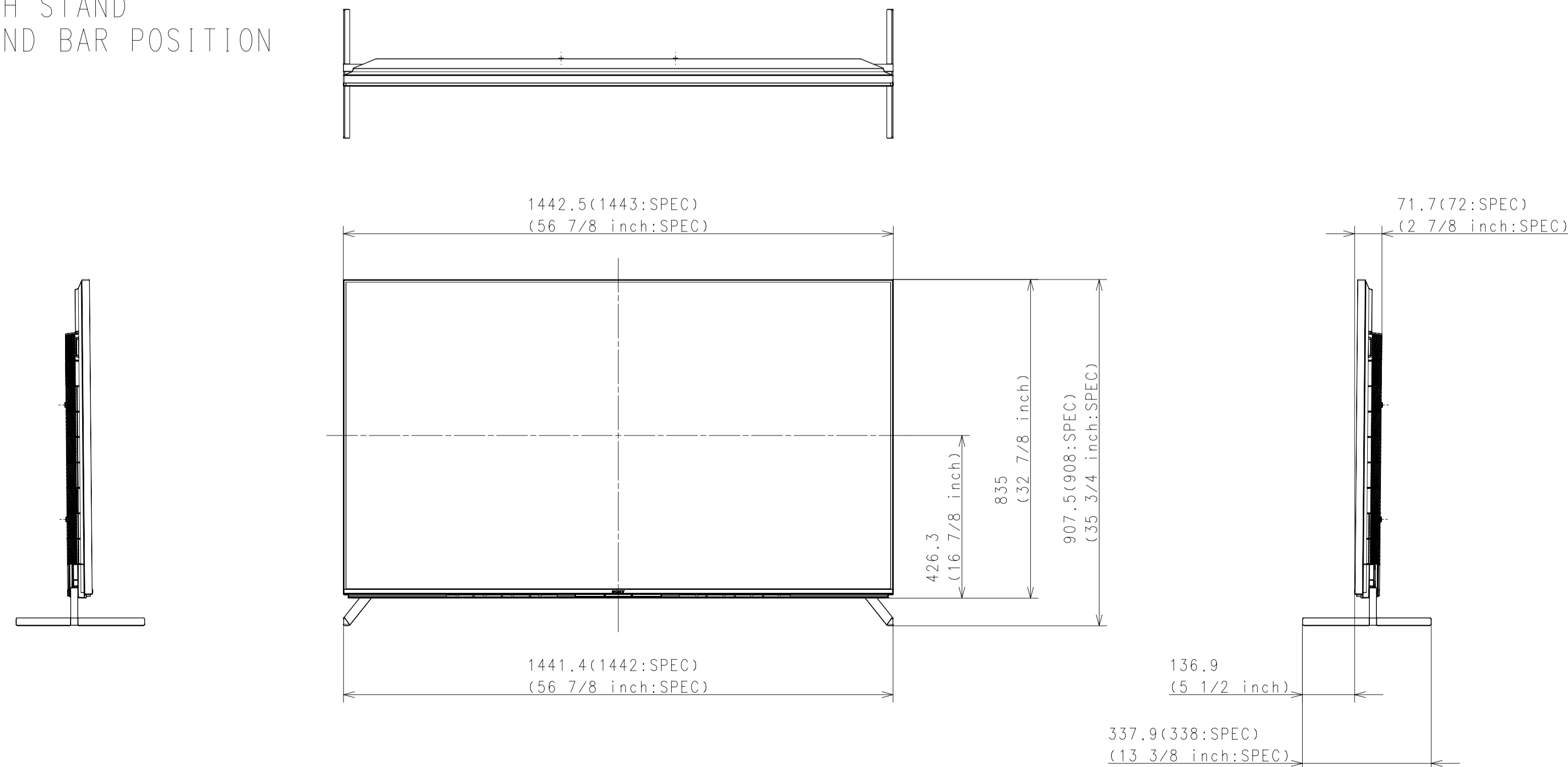


Area	JAPAN	NORTH AMERICA	EUROPE	GENERAL AREA	CHINA	
Model Name	XRJ-65X95J	XR-65X95J	XR-65X95J	XR-65X95J	XR-65X95J	
SV No.	SV-39367	SV-39169	SV-39316	SV-39205	SV-39298	
DIMENSION	TV only (W x H x D)	144.3 x 83.5 x 6.6 (3.95) cm	1443 x 835 x 66 (39.5) mm / 56 7/8 x 32 7/8 x 2 5/8 (1 9/16) inch	Approx. 144.3 x 83.5 x 6.6 (3.95) cm	Approx. 1443 x 835 x 66 (39.5) mm	Approx. 1443 x 835 x 66 (39.5) mm
	TV with Stand (Standard position) (W x H x D)	144.3 x 84.8 x 33.8 cm	1443 x 848 x 338 mm / 56 7/8 x 33 1/2 x 13 3/8 inch	Approx. 144.3 x 84.8 x 33.8 cm	Approx. 1443 x 848 x 338 mm	Approx. 1443 x 848 x 338 mm
	TV with Stand (Narrow position) (W x H x D)	-	-	-	-	-
	TV with Stand (Soundbar position) (W x H x D)	144.3 x 90.8 x 33.8 cm	1443 x 908 x 338 mm / 56 7/8 x 35 3/4 x 13 3/8 inch	Approx. 144.3 x 90.8 x 33.8 cm	Approx. 1443 x 908 x 338 mm	Approx. 1443 x 908 x 338 mm
	TV with Floor Stand (W x H x D)	-	-	-	-	-
	Stand Width (Standard position)	144.2 cm	1442 mm / 56 7/8 inch	Approx. 144.2 cm	Approx. 1442 mm	Approx. 1442 mm
	Stand Width (Narrow position)	-	-	-	-	-
	Stand Width (Soundbar position)	144.2 cm	1442 mm / 56 7/8 inch	Approx. 144.2 cm	Approx. 1442 mm	Approx. 1442 mm
WEIGHT	Floor Stand Width	-	-	-	-	-
	VESA Hole Pitch	30.0 x 30.0 cm	300 x 300 mm / 11 7/8 x 11 7/8 inch	30.0 x 30.0 cm	300 x 300 mm	300 x 300 mm
	TV Only	27.5 kg	27.5 kg / 60.6 lb	Approx. 27.5 kg	Approx. 27.5 kg	Approx. 27.5 kg
	TV with Stand (Standard position)	28.5 kg	28.5 kg / 62.8 lb	Approx. 28.5 kg	Approx. 28.5 kg	Approx. 28.5 kg
	TV with Stand (Narrow position)	-	-	-	-	-
	TV with Stand (Soundbar position)	28.5 kg	28.5 kg / 62.8 lb	Approx. 28.5 kg	Approx. 28.5 kg	Approx. 28.5 kg
	TV with Floor Stand	-	-	-	-	-
Remarks	Floor Stand weight (Supply)	-	-	-	-	-
	W-M't Br. Weight (Supply)	-	-	-	-	-
Remarks	2way	2way	2way	2way	2way	

WITH STAND
STANDARD POSITION



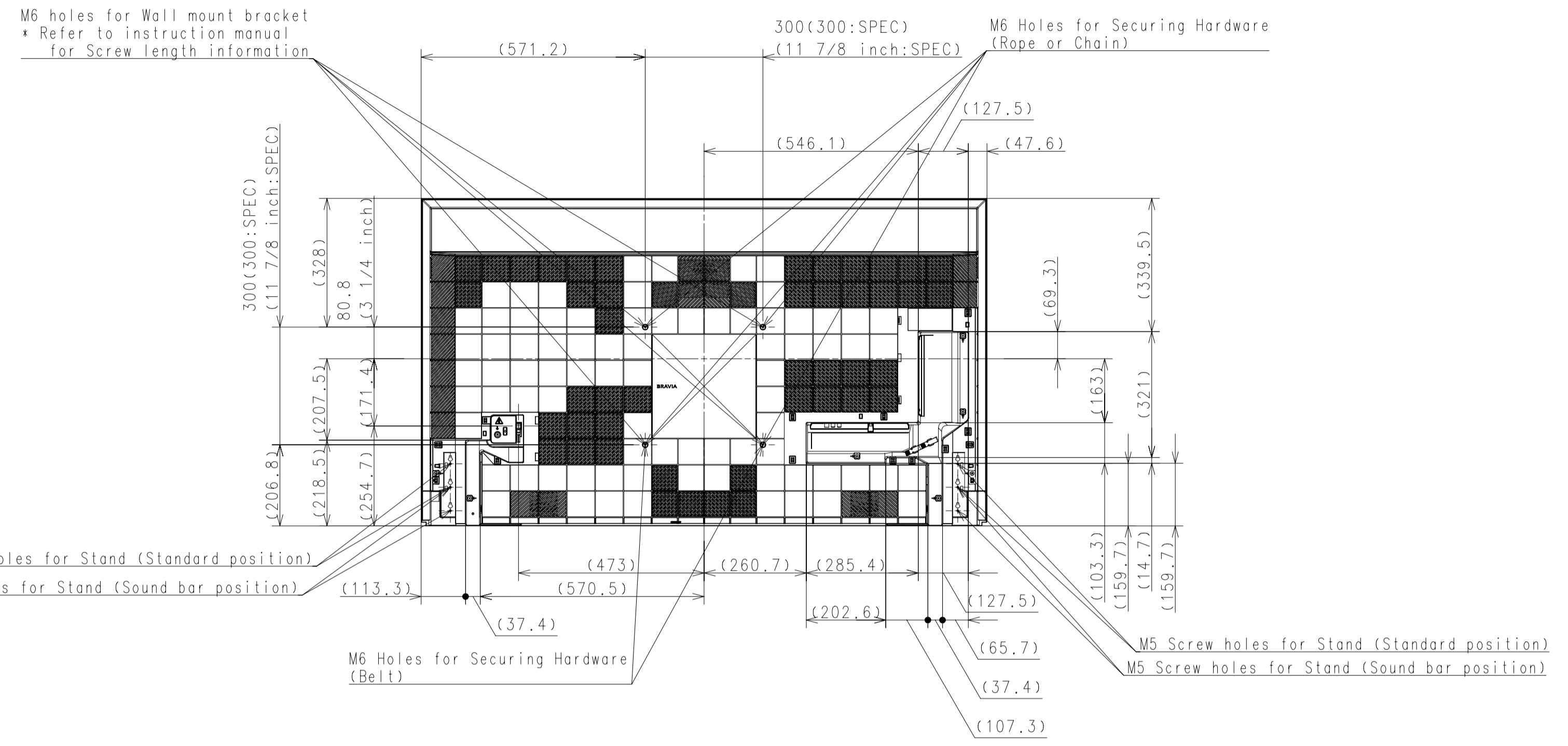
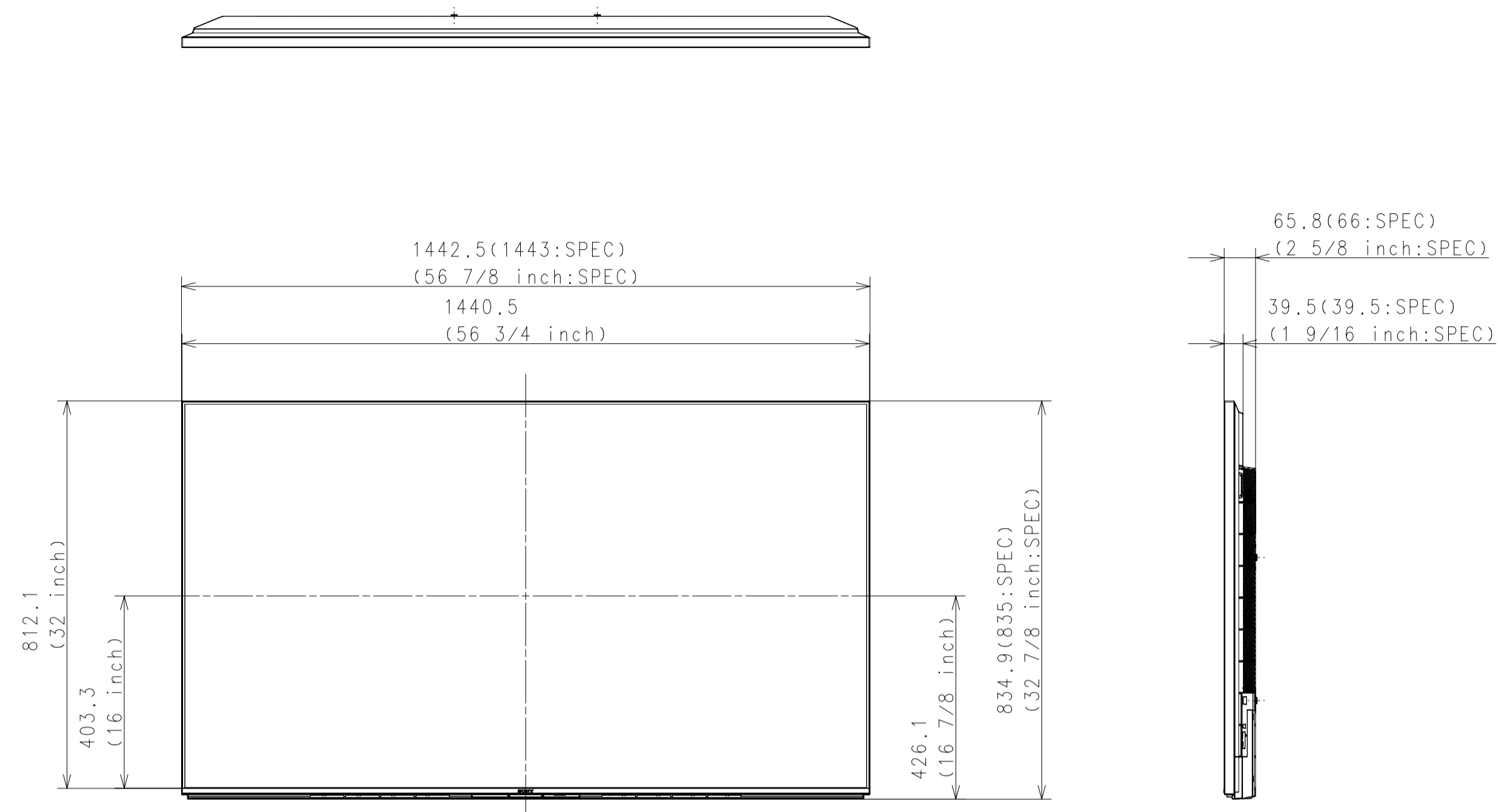
WITH STAND
SOUND BAR POSITION



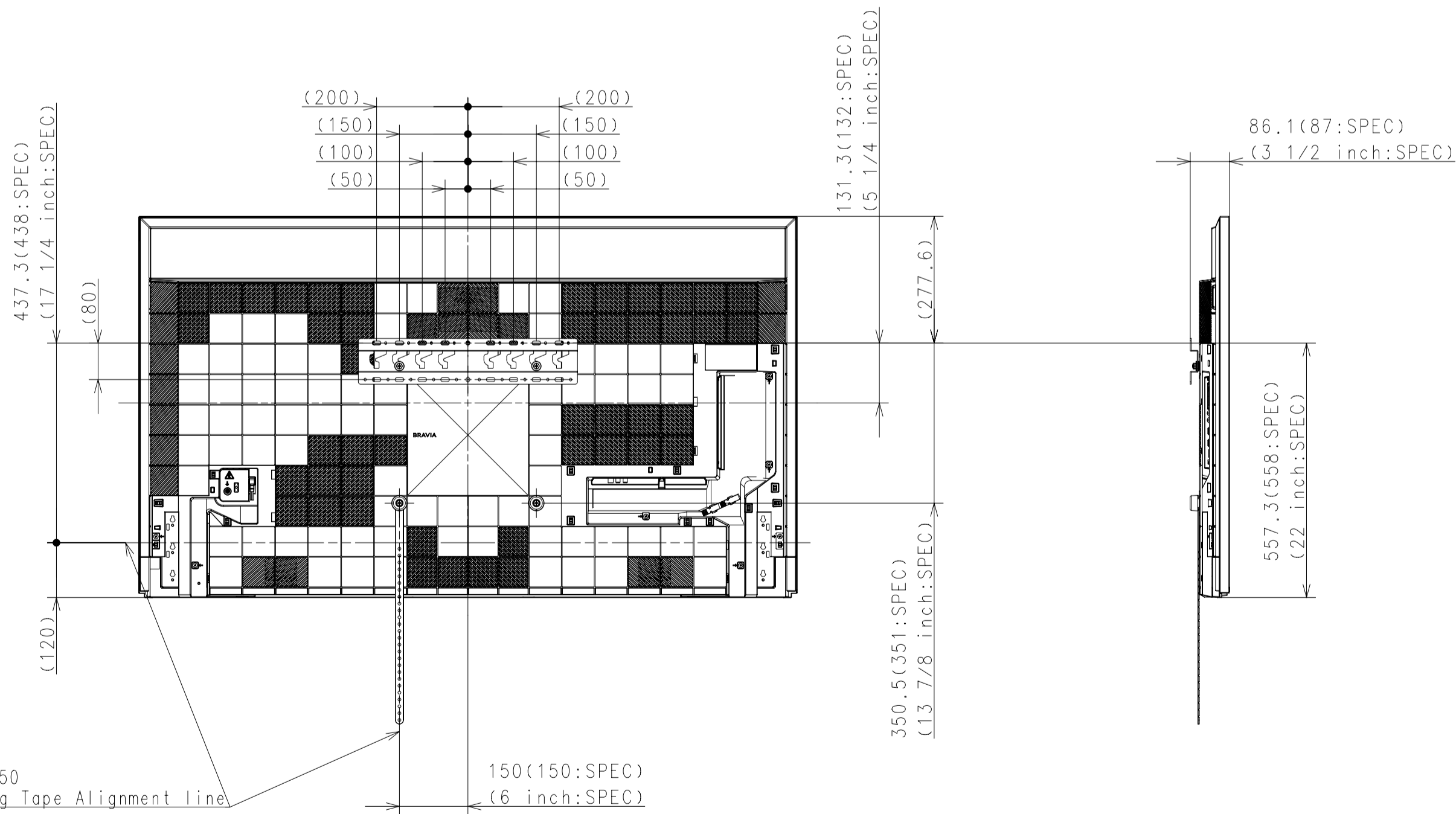
Purchase recycled resins and wire rods only from the business partners that Sony approves as Green Partners.
再生樹脂・銅線はグリーンパートナー認定者からの調達を促すこと。

DATE OF ISSUE 2021.02.04	DOCUMENT TYPE OUTLINE DRAWING	TELEFACING DRAWING (JIS & ISO/IEC JIS)
REVISION	MATERIAL COLOR	FINISH COLOR
RESPONSIBLE DEPARTMENT SHES TV Div.	ORIGINAL MODEL SV-39367	DESCRIPTION 65 (X95J) EXTERIOR VIEW
PLANNED BY K. Iwatake	CHECKED BY	APPROVED BY
DRAWN BY K. Iwatake	SCALE 1:10	TENTATIVE MODEL
DATE 2021.02.04	SIZE A1	UNIT mm
PAGE NO.	SUFFIX	REV. NO.
1 / 3		

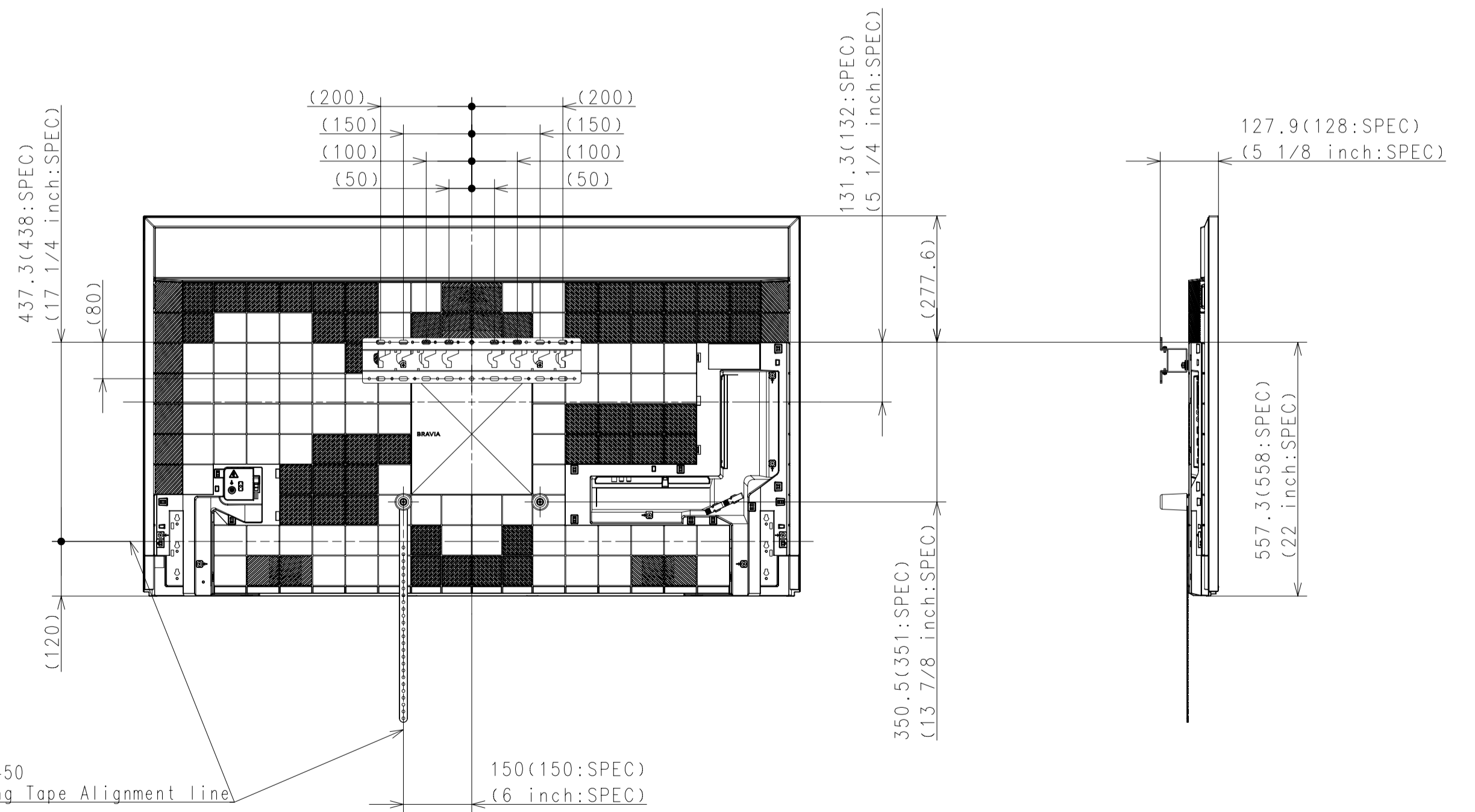
WITHOUT STAND



SU-WL450 SLIM



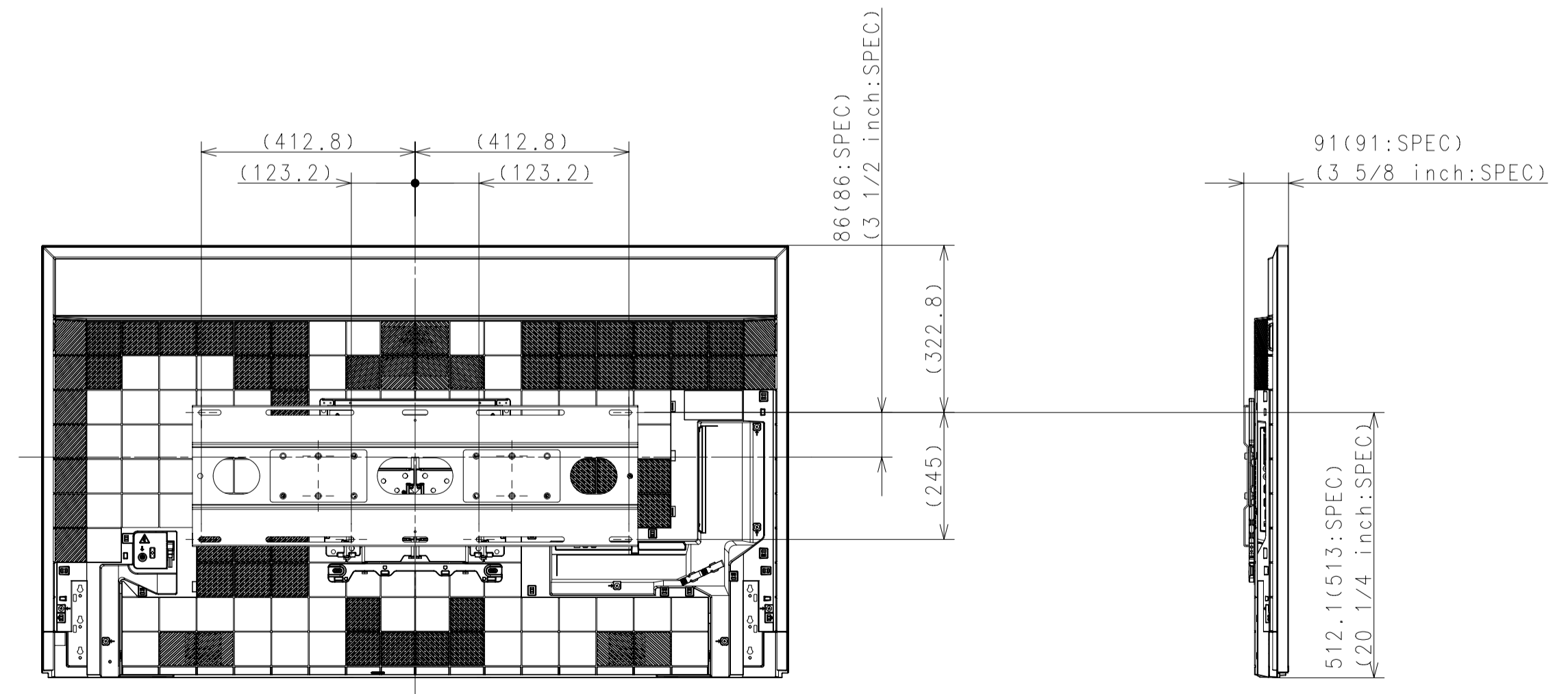
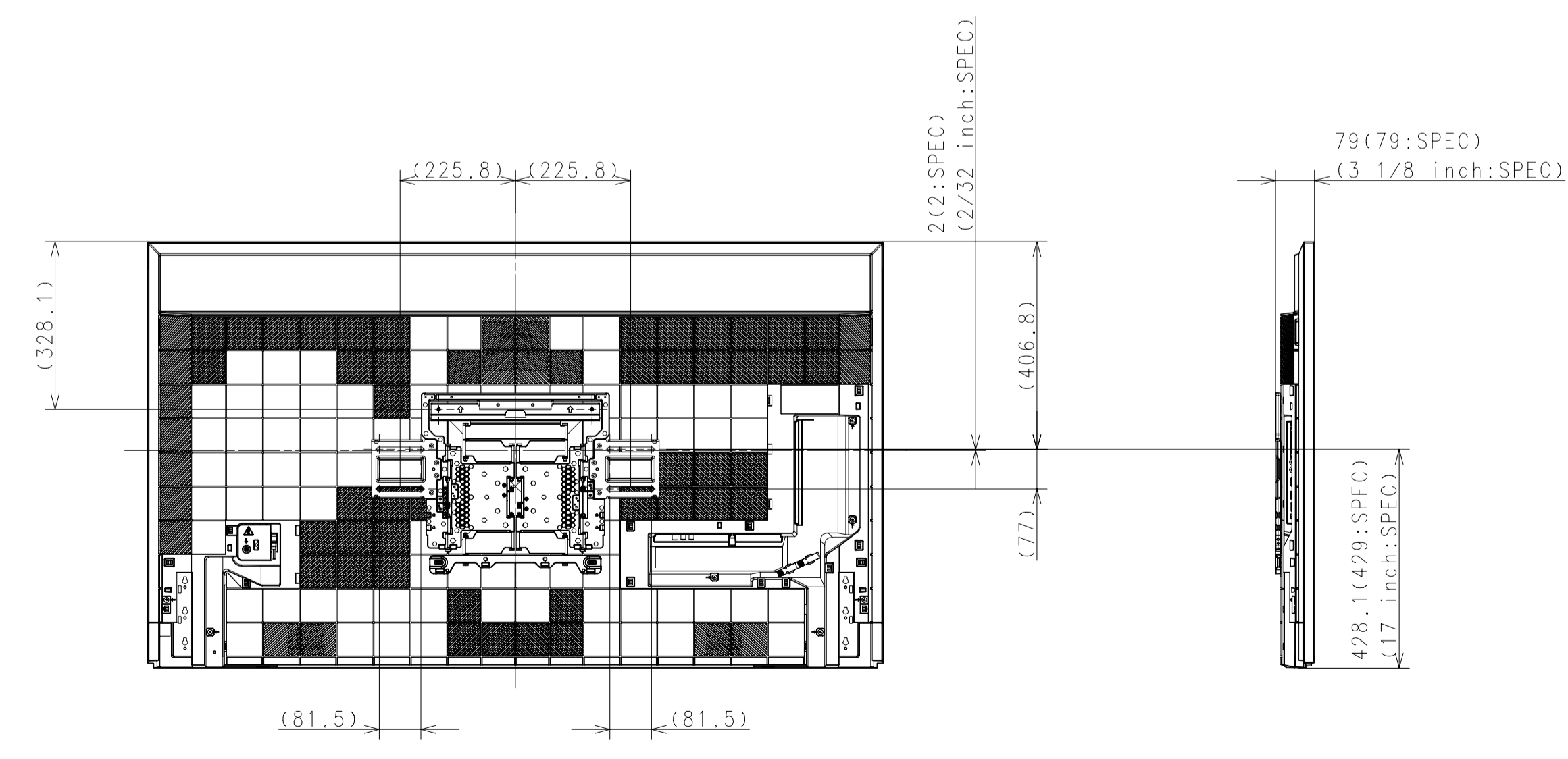
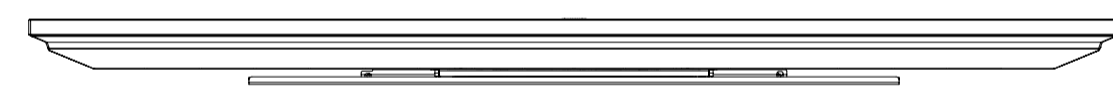
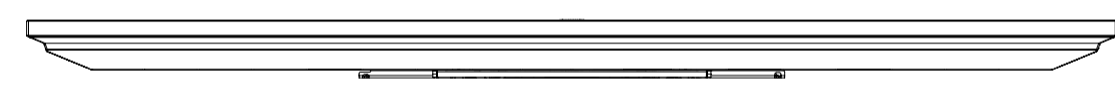
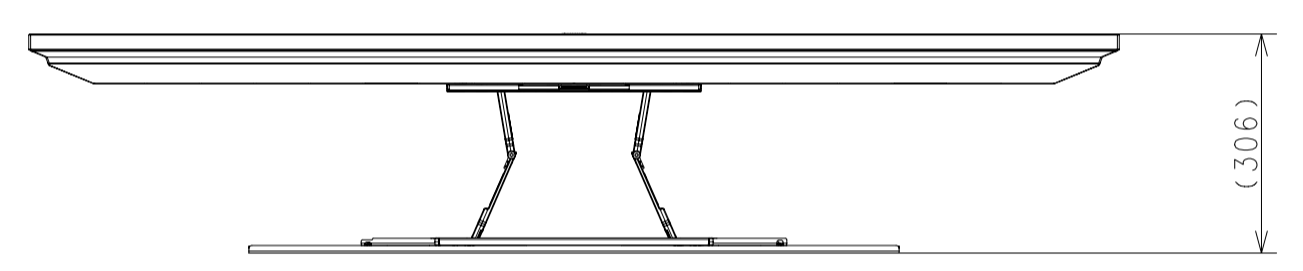
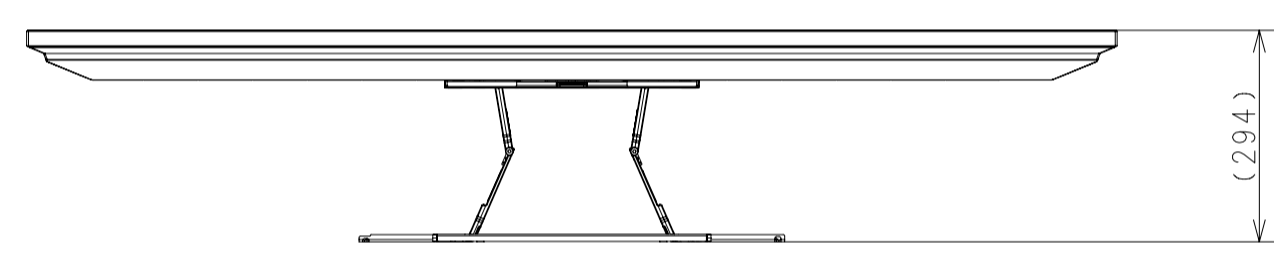
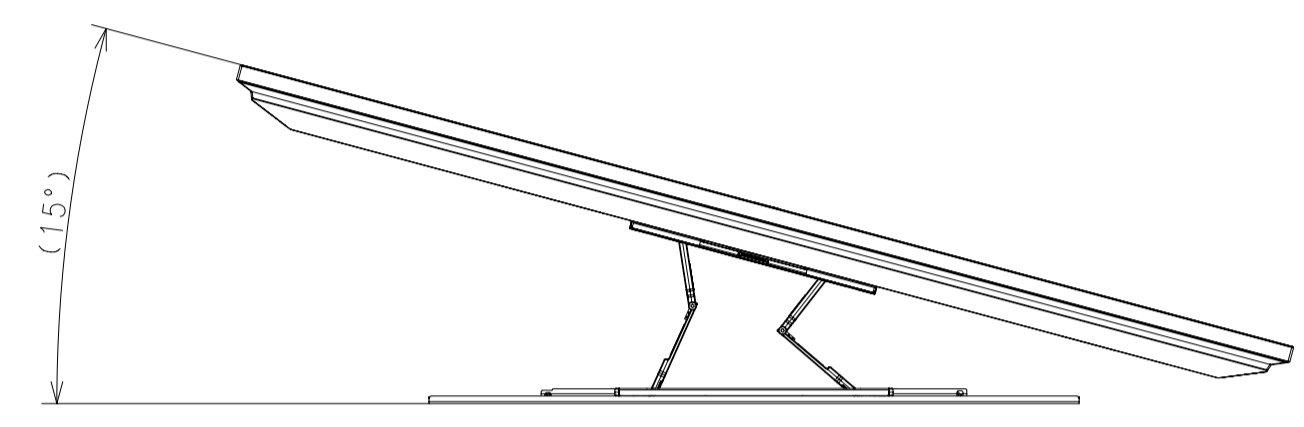
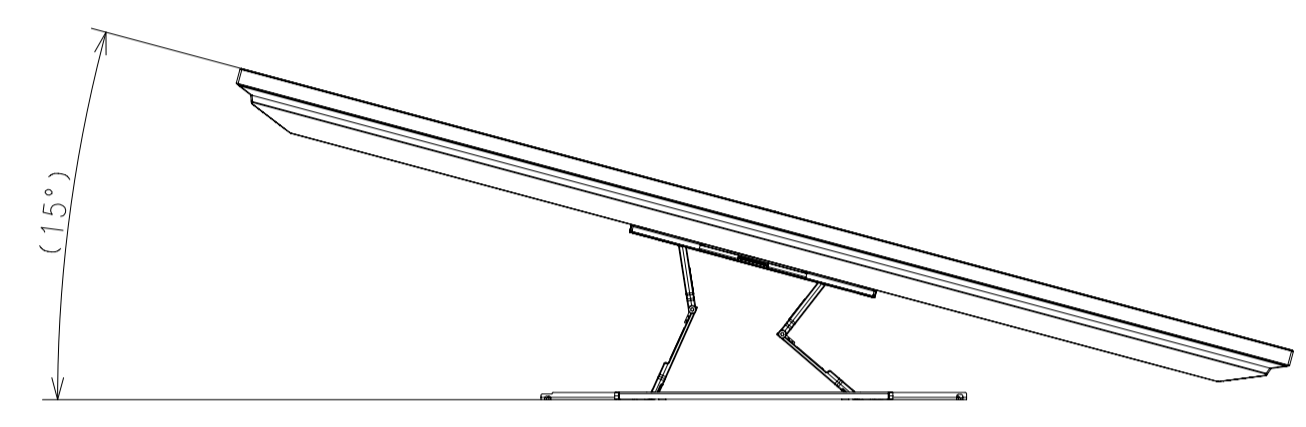
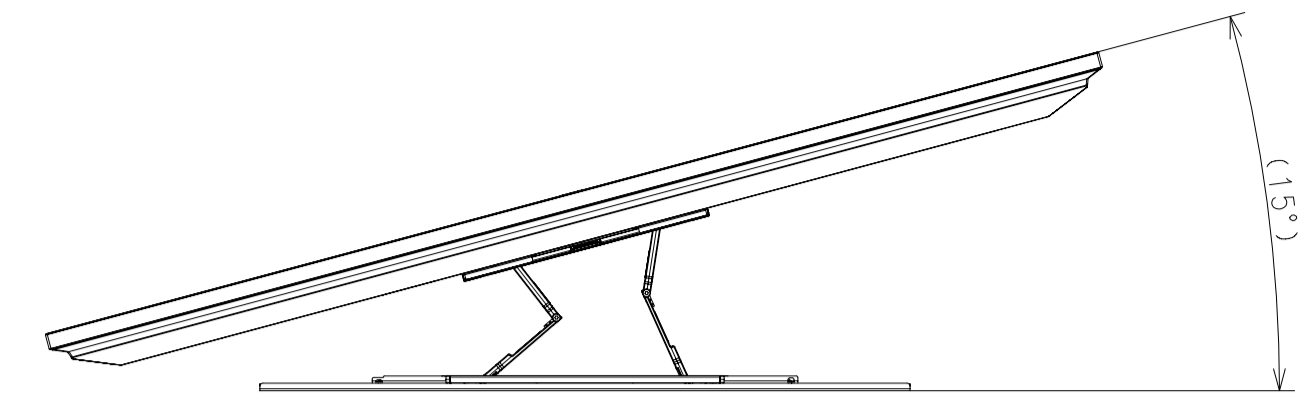
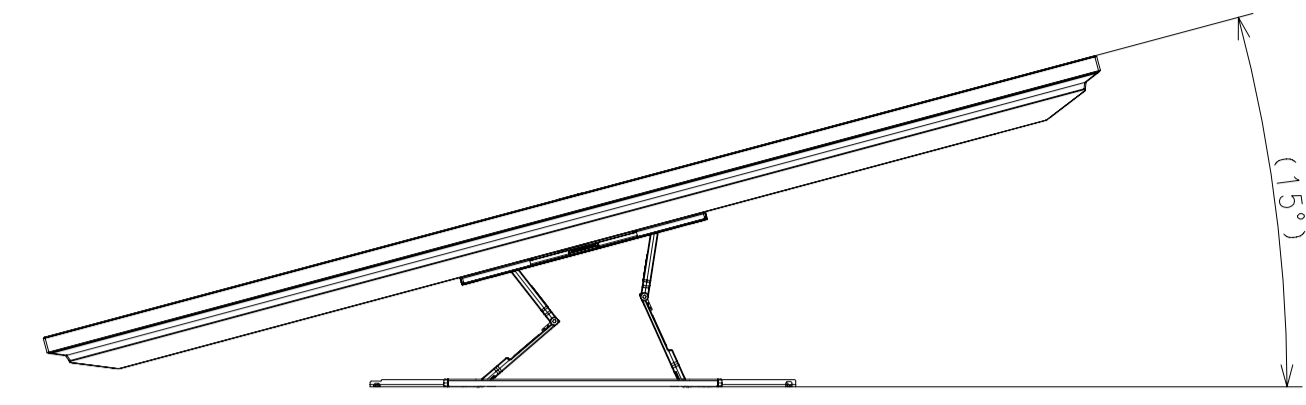
SU-WL450 STANDARD



DESCRIPTION 1	65 (X95J) EXTERIOR VIEW	LEGAL OWNER	Sony Corporation	SCALE	1:10
DESCRIPTION 2	65 (X95J) EXTERIOR VIEW	PART NO.		SHEET/PAGES	2 / 3

SU-WL850

SU-WL855 with LATERAL SHAFT BRACKET



DESCRIPTION	SCALE
65 (X95J) EXTERIOR VIEW	1:10
LEGAL OWNER	SHEET/PAGES
Sony Corporation	3 / 3
PART NO.	
65 (X95J) EXTERIOR VIEW	